

December 2019  
Kislev-Tevet 5780

# TEMPLE BETH EL MEKOR CHAYIM

## Contents

From the Rabbi .....	1
Chanukiah Lighting .....	2
Inclusion Project .....	2
President's Report .....	3
We Care .....	3
Youth .....	4
Religious School .....	4
Create a Jewish Legacy .....	5
Soles 4 Soles .....	5
Community .....	5
Classes .....	6
Film Series .....	6
Fundraising .....	6
Mitzvah Squad .....	7
Man of the Year .....	7
Fiddler on the Roof .....	8
Sisterhood .....	8
Bingo .....	9
Beatles .....	10
Yahrzeit .....	11
Donations .....	13

Temple Beth-El Mekor Chayim  
338 Walnut Avenue Cranford, NJ 07016  
(908) 276-9231 www.tbemc.org  
Rabbi Paul Kerbel  
Temple Administrator Susan King  
President Mark Kaplan  
First Vice-President Tammy Kaplan  
Second Vice-President John Harris  
Third Vice-President Phyllis Kandl  
Immediate Past President Jackie Baranoff  
Treasurer Mindy Kipness  
Financial Secretary Alan Schwartz  
Corresponding Secretary Becca Reissman

Editors: Debbie Abrams Kaplan and  
Devorah Wolf  
Thanks: Art Werschulz, Howard Epstein  
To Submit Articles or Letters to the Editor:  
bulletin@tbemc.org

## A Few Words From the Rabbi... The Lessons of Hanukah

*Rabbi Paul David Kerbel*

Hanukah is a 'major' Jewish holiday. You might be surprised by that. Most rabbis and educators would say just the opposite, that Hanukah is a 'minor' Jewish holiday. From a religious perspective, Hanukah does not have the religious significance of Rosh Hashanah, Yom Kippur, Passover, Shavuot and Sukkot. But, from a cultural, ethnic and historical perspective, Hanukah is deeply symbolic.

In Jewish life today, more Jews observe Hanukah than any other ritual other than participating in a Passover Seder. Given the "mazel" that Hanukah falls near Christmas, at least in America, Hanukah represents a powerful response to the feeling of exclusion and the challenge of being a minority in American society.

And if you were to go to Israel in a few weeks and celebrate Hanukah there, you will see how both for largely secular Jews as well as for religious Jews, Hanukah is truly a national and Zionist holiday reflecting the power of Israel as a military power and the power of Israel as a creative and vibrant society that is no longer a bystander but a player on the world stage.

Even more importantly, I would suggest the following four reasons why Hanukah is important to us:

Hanukah represents the first victory in human history for religious freedom. If the Maccabees had lost their battle with their Greek rulers, Judaism would have died out. And since Christianity and Islam emanate from Judaism, three of the world's major world religions would be absent from the world today.

Hanukah teaches us religious tolerance and to celebrate diversity and pluralism. Because we are a minority, Hanukah reminds us

*(continued on next page)*

(continued from previous page)

## HANUKKIAH LIGHTING DELI & GAMES NIGHT

DECEMBER 24, 5:15 pm

**5:15 Minyan & Hanukkah  
Lighting**

**5:40 Latkes, Apple Sauce &  
Sufganiyot**

**6:00 Deli and Games Night**

Reservations and payment check for Deli and Games Night due by Wednesday, December 18 at 4:00 pm. Deli provided by Deli King. \$22 per adult; \$11 per child 3-12 years. Please bring your own cards and games. Movies will be shown in the Youth Lounge for the children.

## INCLUSION PROJECT

The Synagogue Inclusion Project Fosters Inclusive Congregational Communities

TBEMC is proud to be a recipient of a Greater MetroWest ABLE grant. The program is through Jewish Federation of Greater MetroWest and the grant is part of its Kehillah Shlemah – Synagogue Inclusion Project (SIP). This program is designed to support Greater MetroWest congregations in furthering their efforts to become more inclusive congregational communities and is made possible through very generous funding from the Gary Aidekman Family Foundation, Inc. and the Sylvia and Seymour Rubenstein Special Needs Endowment Fund. We will be hosting an inclusion weekend February 7-9, 2020. Stay tuned for more details.

## RITUAL

Even when it's not a holiday - Come to minyan and be counted! Evening minyan is Mondays, Tuesdays and Thursdays at 7:30. Please see the online calendar for the minyan schedules for holidays and regular days.

## COMMUNICATIONS

In order to take full advantage of our communication resources please coordinate all events with the temple office. By doing so you'll have the ability to advertise your event in the following places:

weekly eblast      website  
bulletin              calendar  
Facebook            Shabbat handout  
local newspapers    and more

You'll also be able to request an electronic payment page on the website for your event. We look forward to helping all event coordinators "get the word out" and having all our events successful.

communications-team@tbemc.org

to be tolerant of, respectful of, and proud of religious diversity. For the most part, communities of religious believers share more in common than what separates them. All of us are God's children seeking to understand what God wants us to do.

Hanukah reinforces the faith of the minority to stand up for its principles, unique ethnic and religious identity and the values of freedom and democracy. At one time, some Jews believed that "you should be a Jew at home and a person on the street." Today in America, people of all ethnic and religious groups can "wear their identity or ethnicity on their sleeves" and be proud in public of their values, beliefs and traditions.

Hanukah reminds us of the modern-day miracles that we have participated in: the redemption of over one million Jews from the former Soviet Union, the redemption of the Jews from Ethiopia and the rescue and support of endangered Jews and Jewish communities around the world. We must always be prepared to deliver the few from the many, the weak from the mighty and the righteous from the wicked.

And finally, I want to remind you that the word "Hanukah" which means, "dedication," comes from the same Hebrew shorash ('root word') as the word "hinuch," education. Hanukah is about making sure that we maintain our Jewish identity, that we teach our children, the values, the history, the rich heritage which is ours to embrace and pass on to the next generation. May the lights of our Hanukah menorah symbolize our love for Judaism, our fight for freedom, and our desire to make the world a better place. Our Jewish tradition has taught us this eternal message: "It is better to light one candle than to curse the darkness."

## Bima Accessibility

**Thank you to ALL who have sponsored a part of this project.  
All donors will be recognized in a prominent display.**

There are still many opportunities  
for sponsors and we encourage chair sponsorships.

<b>Stair Railings (4)</b>	<b>\$7,200</b>
<b>Lift Railings</b>	<b>\$3,600</b>
<b>Stair Railing (Individual)</b>	<b>\$1,800</b>
<b>Congregational Seating Row</b>	<b>\$1,800</b>
<b>Clergy and Bima Chair</b>	<b>\$1,080</b>
<b>Ark Sheer Curtains</b>	<b>\$360</b>
<b>Individual Congregational Seat</b>	<b>\$180</b>
<b>General Support</b>	<b>any</b>

Thanks to all who support our accessible sanctuary project! *Laura Cohen*

# President's Report

Mark Kaplan

Although we are past the 5780 Holiday Season, our community has been as engaged as ever. It would be impossible to do justice to all of the great programs and events we've had in the last month: learning with our Scholar in Residence, enjoying food and the Beatles and the Men's Club/Sisterhood brunch, welcoming new and prospective families at Bagels and Babies, and thanking Wallace Wellington, our custodian, for all his years of service, just to name a few. What I can and will say is what a blessing it is to be together as a community, as we help each other on our Jewish journeys.

Thank you to those who have submitted your 2019-20 pledge forms and made payments towards your pledge. Sustaining Pledges are our biggest source of revenue and critical to maintain our operations. If you have not yet sent in your pledge, just do it! It is important for our community, and it will show respect towards our hard-working financial officers, Treasurer Mindy Kipness and Financial Secretary Alan Schwartz.

Please help officially welcome Rabbi Kerbel to our TBEMC family on December 8th at his installation. I urge you to be a sponsor for the event, as the net proceeds will benefit our congregation. Please also welcome our new administrator Susan King to our TBEMC family; stop by the office and say hello when you have a chance.

December 15th brings two great events: our Religious School Hanukah Zimriyah Song Festival, and an excursion to Fiddler on the Roof in Manhattan – the whole community is invited to both. See Marty Schwartz or ping him, [schwartz.martinm@gmail.com](mailto:schwartz.martinm@gmail.com) for Fiddler tickets and information – they are going fast!

As my last President's message for 2019, I wish everyone a Happy Hanukah and a Happy Secular New Year. If you are in town please light the hanukkah at TBEMC's Deli and Games Night on December 24th. The Kaplans send regrets as we will be at a more southerly latitude (Exit 102...kidding!).



The current and past presidents of TBEMC

## WE CARE

After a very successful first year, the WE CARE committee looks forward to continuing to provide support through doing deeds of loving kindness for our TBEMC community. Many thanks to all those that have volunteered this past year in the many areas that WE CARE provides services to our community.

### **Volunteer opportunities are available in the following areas:**

The We Care committee is looking for a volunteer to send out preprinted monthly birthday cards to our congregants. Also needed: meal prepping and delivery for those in need, Homework Club Tuesdays 3-4 pm at TBEMC, Shiva meals, providing transportation, helping with senior monthly gatherings, medical apparatus lending library, mailings and correspondence, monthly birthday cards and get well cards, making telephone calls, home visitations, hospitals and nursing home visitation and food bank collections.

We welcome anyone wishing to volunteer in providing deeds of loving kindness; any amount of time is appreciated no matter your age or availability. Please contact Dave Salomon at (908) 868-9028 or email [dsalomon8648@gmail.com](mailto:dsalomon8648@gmail.com)

## JVS

### **JVS Offers a Broad Range of Job Counseling Services**

If you or someone you know is unemployed and looking for work, changing careers, re-entering the workforce, or is a recent college graduate and seeking a job for the first time, we can help. JVS Career Counseling & Placement offers high-quality career services — at no or low-cost to you. Services include: one-on-one career counseling and job placement, resume writing, interview training, mentoring, support groups, workshops, vocational testing, and more. For information, contact Dr. Meryl Kanner at 973-674-6330 ext. 271 or [mkanner@jvsnj.org](mailto:mkanner@jvsnj.org)

Save the date for commUNITY Mitzvah Day through the Federation of Greater MetroWest. This is a day filled with hands-on volunteer experiences for all ages and stages, taking place all over Greater MetroWest. The date is March 29, 2020.

Financial assistance for fertility treatment, surrogacy, and/or adoption.

Interest free loans through the Hebrew Free Loan of NJ's Building Jewish Families Fund. Details: <http://bit.ly/2DYrhMO>





## TBEMC Youth

The 2019–2020 school year is here! This year USY and Kadima have some great events planned. As always, we are looking for new and old members to register for USY. To register as a member of USY or Kadima, fill out the form here:

<http://bit.ly/2MZqZZV>

You can also email:

[TBEMCYouthgroups@gmail.com](mailto:TBEMCYouthgroups@gmail.com)

for more information!

Please take a look at the current calendar of events and kindly consider joining USY or Kadima!

Ellie Barkin-Baron

[TBEMCYouthgroups@gmail.com](mailto:TBEMCYouthgroups@gmail.com)

### TBEMC Youth Calendar of Events

#### KADIMA

#### Zimriyah and Hanukkah Party

December 15, 11am

Join us! We're celebrating Hanukkah by watching our wonderful Hebrew school students sing festive songs during the Zimriyah. Then, the celebration continues during the Hanukkah party. We will be making air dry clay menorahs and Hanukkah crafts. Pizza, donuts and snacks will be served.

RSVP by December 12:

<http://bit.ly/RS-RSVP>

#### Pajama Pasta Party

January 25, 6–9:00 pm

Join Kadima for a fun night in to avoid the cold that comes with winter. Wear your favorite sweat pants or PJs and bring your favorite pillow and blanket! There will be plenty of games and snacks. Most importantly the kids will get to make their own pasta creation! We will also be watching a movie.

RSVP by January 23:

[tbemcyouthgroups@gmail.com](mailto:tbemcyouthgroups@gmail.com)

#### Purim Carnival

March 8



## Religious School News

### TBEMC Religious School Provides Education for All Age Groups

The TBEMC Religious School fosters love for G-d, prayer, Torah, and community. We offer a range of Jewish education for the entire family. Religious School is Sundays from 9-12 for all grades, and Tuesdays from 4-6 for 3rd-7th grades. When students reach Bar/Bat Mitzvah, they will have learned skills in Hebrew reading, prayer and understanding of Jewish holidays.

Students begin in kindergarten through 2nd grade with hands-on learning that includes holidays and Hebrew letters. Temple membership is not required until 3rd grade. With our new Sustaining Pledge Model, more young families are joining an earlier time, because we have a more flexible donation model without a set dues amount.

The Gan Katan class held bi-weekly for ages 3-4, is filled with joy through art, music, storytelling, dancing and friendship. Temple membership is not required for this program, which begins the foundation of Jewish life for each child.

Tot Shabbat for children 0-6 years is held monthly and helps light a spark that connects children to Judaism at a young age. We develop the habit and joy of praying with the community. Temple members and non-members are warmly welcomed.

Parents are encouraged to enhance their Jewish education through Shabbat Junior Congregation and Sunday morning prayer service.

We welcome you to register throughout the year for Gan Katan through 7th grade classes. Any time you decide to register is the right time! We recognize that there are traditional and non-traditional family units with unique spiritual needs. It is our goal to open our doors to all who seek a congregation such as TBEMC.

Contact the office or Doni Remba for more information.



The dinner to honor Wallace Wellington was a lovely affair.



### LOOKING AHEAD

2019 was both a wonderful year and a sad year for Create a Jewish Legacy and our Legacy Circle. We enrolled 8 new members into our Legacy Circle but lost 2 members as well. We mourn their passing and thank their families for fulfilling their parents' wishes. Funds received from those commitments are being applied to the interests they displayed during their lifetime, and some funds are being set aside for future needs as well.

David Springer spoke on Yom Kippur about the importance of assuring our Jewish future here at TBEMC. He reminded each of us that what we do during our lives makes a difference to our family. He told us that setting a good example for our family was paramount. 78 of you have already done just that. Since that speech, we are pleased to report that a number of you have reached out to us and that there are a number of new commitments pending. As we move into a new secular year, it is our hope that TBEMC continues its move in a positive direction under the strong leadership of Rabbi Kerbel, and that our congregants continue to provide current spiritual and financial support as well. There is a wonderful vibe here and an upcoming calendar full of events for everyone. Legacy giving which enables such a full plate of events to remain available for all as we move forward. We want you to become part of our Legacy Circle sooner rather than later. Keep Judaism and TBEMC alive now! Becoming a Legacy Circle member is painless and making a legacy gift does not take current dollars away from your personal needs now, and it will not significantly impact your legacy giving to your family down the road. Your commitment is a FUTURE gift. Our gifts range from \$1,800 to \$100,000 and each one matters, no matter what size! Call David Springer at 908-370-1890 or Laura Cohen at 908-389-1744 to join our Legacy Circle, or fill out the commitment form located in this Bulletin. Help assure that TBEMC will continue to be here for the next generation and beyond. We can't wait to hear from you! *David Springer and Laura Cohen*

## COMMUNITY

I am pleased to announce our new administrator, Susan King, started in November. She comes to us with lots of administrative experience, most recently with the Maplewood Village Business Alliance and Maplewood Chamber of Commerce. Please welcome Susan to our TBEMC family and help her acclimate to her new role.

I want to thank Sandy Springer, Jackie Baranoff, Heidi Farber, Ken Davidson and Rabbi Kerbel for being involved in hiring Susan. I also wanted to thank Joe Bloomfield, Judy Kupferberg, Linda Heicklen, Harriet Mazur and anyone else who volunteered to both staff and organize the office during the transition. *Mark Kaplan*

My wife Rosi and my stepson Moises took their immigration test, and I am so proud to say they are both now U.S. citizens. I teared up when the new citizens sang the Star Spangled Banner *Marty Metzger*

On behalf of the Coffman and Schwartz families, I'd like to thank the TBEMC community for the support we received and the condolences on the passing of my mother, Sandy Coffman. *Rachel Schwartz*

Thank you to the kiddush donors.  
*Joe Bloomfield*

Prior to the passing of our beloved Kurt Steiner, he received a lovely write-up in the Union Daily News. You can read it here:

<https://unionnewsdaily.com/headline-news/50992>

The 36 attendees at the recent Deli King dinner to honor Wallace Wellington had a nice time. Wallace brought his daughter Shannon with him, and we honored him for his 34 years of loyal service. Wallace and Shannon were surprised. Thanks to all who came and thanks to all who contributed to the \$1,500 cash gift we presented him. Thanks to Rabbi for sending along some words, Dave for the WE CARE hat, Gail for the Sisterhood gift, Jackie for the certificate and frame, Mindy for tracking the donations, and Mark for his words of greeting. *Marty Metzger*

## Soles 4 Souls

TBEMC will be hosting a shoe drive for Soles 4 Souls, an organization which provides shoes to impoverished communities around the world. Many in these countries are not able to get to work or school due to lack of a pair of shoes. The shoes from the drive are provided to entrepreneurs in order to start or maintain cottage industries, whereby shoes are sold at low cost to community members. Soles 4 Souls is a 501(c)(3)



charity, rated 4 stars by Charity Navigator. They assist families in lifting themselves out of poverty. The recipient nations are currently Haiti, and others in Africa and Central and South America. The drive will take place November 4 – December 20. Place your new or gently used shoes in the appointed bin in the temple lobby.

Any questions or ideas can be sent to Susan Eisenberg.

[ShoshanaE123@aol.com](mailto:ShoshanaE123@aol.com)

# Classes

## TORAH WITH LAURA

*We have many openings for upcoming haftarah!*

Have you thought about re-learning your bar or bat mitzvah haftarah? Do you want to try out a new ritual skill? Do you have a special family occasion coming up that would be appropriate for the honor of chanting a haftarah? Are you willing to put some time into practice? Lessons and assignments for Torah and haftarah readings! This is your one-stop shop! Please reply if you have a specific request or just want to learn how to do it.

Laura Cohen, cell (848)702-9106

## HEBREW

Hi everyone! I would like to start a new Hebrew reading class. The class would be for beginners and those who had training as a child, but their skills have lapsed. Contact me if you are interested! Liela Bernstein  
(908) 233-0058, lielabern@comcast.net

## FILM SERIES

The Lifelong Learning committee will be starting another film series this month. They runs on Sundays at 4:00 pm in the Youth Lounge. Put the dates on your calendar! The theme is comedy films, with a Jewish theme and/or Jewish content.

December 29, 2019

*Brighton Beach Memoirs*

January 26, 2019

February 23, 2019

March 29, 2019

April 26, 2019

May 17, 2019

June 14, 2019



ADL Director Evan Bernstein spoke at a Lifelong Learning class given by Rabbi Kerbel.



Professor Jack Wertheimer spoke to the congregation as our scholar-in-residence.



# FUNDRAISING

## GIFT CARDS

Sisterhood sells gift cards all year long for all the major supermarkets in the area—ShopRite, Acme, Stop & Shop and Kings. Use them instead of your credit card when grocery shopping. When you buy your gift card through Sisterhood, TBEMC get a percentage of every card and it costs you nothing extra. Did you know that 5% of every ShopRite card you buy goes back to TBEMC, its library, Kadima/USY, etc. While you may forgo your credit card rewards in using the cards, you will be making a valuable donation to the shul. Please consider buying some throughout the year, either for personal use or to give to your college student or friends as a gift.

**HOW TO GET GIFT CARDS** Barbara Goodgold (908-276-6634) and Harriet Mazur (908 499-4760) will be selling them. The cards are also available in TBEMC office, so stop in with your check during office hours (including the start of Hebrew School on Tuesdays). The cards are also available at most TBEMC events.

Gift cards bring in thousands of needed dollars to TBEMC every year. Although it may take a little adjustment in how you do your grocery shopping, purchasing or ordering cards from Barbara or Harriet, does a mitzvah. Everyone needs to eat. Please consider purchasing some cards throughout the year!

## CARS FOR CASH

Are you looking for a tax break for next year? One great way to support TBEMC is by donating your used car. You get the full tax deduction and TBEMC gets the majority of the donation. To donate, go to the "Support the Temple" part of TBEMC's website, click "Support by Shopping" and then click "CARS." For questions or more information on this easy donation process, please contact Mark Kaplan at [markikaplan@hotmail.com](mailto:markikaplan@hotmail.com) or (908) 232-5498.

*Thank you to Amy and David Thaler, and Lance and Phyllis Kandl for their recent car donation.*

## SUPPORT TBEMC THROUGH SHOPPING

A reminder to use the Support by Shopping link on the TBEMC site, or just bookmark your computer: <http://tbemc.org/shopping/>

Amazon has historically generated the most revenue for the Temple in terms of support by shopping (with the exception of car donations), but we can do much better. Use this URL to support TBEMC by shopping with Amazon as well as Barnes and Nobel, Jewish National Fund, car donations, JDeal, Escrip and Israel Bonds: <http://tbemc.org/shopping/>

Please send an email if you have any difficulties or questions.

David Thaler

[mediatorthaler@hotmail.com](mailto:mediatorthaler@hotmail.com)



# Torah Fund

Every woman has the opportunity to participate in preserving, promoting and perpetuating Conservative/Masorti Judaism through active giving to the [Torah Fund Campaign](#) of Women's League in support of the Jewish Theological Seminary (New York, NY), Ziegler School of Rabbinic Studies (Los Angeles, CA), Schechter Institute of Jewish Studies (Jerusalem), Seminario Rabinico Latinoamericano (Buenos Aires), and Zacharias Frankel College (Potsdam).

The Torah Fund campaign began in 1942 as a scholarship fund. In 1963, it merged with the Mathilde Schechter Residence Hall campaign that provided housing for undergraduate students. In time, the campaign identified needs and raised funds for specific projects, including:

Women's League Educational Pavilion (Kripke Tower)  
Mathilde Schechter Residence Hall Renovations  
Women's League Seminary Synagogue  
Goldsmith Hall  
JTS Quadrangle  
JTS Library Bookshelves  
Schechter Institute of Jewish Studies Garden  
Residence Hall at the American Jewish University



For the past several years, funds raised by Torah Fund have gone toward scholarships to all the schools. There are continuing opportunities for sisterhoods and individuals to provide support to all four institutions through Torah Fund. Thousands of dedicated volunteers have contributed to the spiritual, esthetic and material well being of these educational communities by supporting Torah Fund projects.

*The 5780 (2019-2020) Torah Fund pin depicts a heart surrounded by three circles, one larger than the next. This symbolizes the heart of kindness, which Jews enact in ever-widening realms of generosity: from family, to community, to the larger world; from North America, to Israel, to the world; or from sisterhood, to region, to the larger world of Women's League for Conservative Judaism. And as it is said in Psalm 89, may we build a world of kindness.*



## MITZVAH SQUAD AND LAURA COHEN HONORED

Yasher koach to Laura Cohen for receiving the Circle of Distinction 2019 award for raising \$1 million over 20 years for the National MS Society. The award was presented at the National MS Society Leadership Conference.



## Men's Club Regional Man of the Year Dinner

Temple B'nai Tikvah in North Brunswick

December 15

## To honor our Man of the Year Art Werschulz

\$60 per person. Includes an extended cocktail hour with open bar followed by minyan, awards and dessert. (The cocktail hour is usually enough for dinner.)

## SISTERHOOD

### Membership Event

Save the date! Tuesday, December 17 for Sisterhood's Paid-Up Membership event.

### Sadye Ross Book of Memories

Whenever you need a card for a birthday, anniversary, graduation, etc., or for condolences, call or e-mail me. I can write your message and mail a Sadye Ross Book of Memories card for you. Just \$3.50 per card sends your message out and donates money for Sisterhood. You can also buy 10 cards for just \$30 to have cards on hand to send out on your own.

### LOOKING FORWARD TO HEARING FROM YOU

Liela Bernstein  
lielaberns@comcast.net, (908) 233 – 0058

### Oneg and Kiddish

Sisterhood joyfully prepares and platters the Oneg and Kiddush each week that it is not sponsored. Please sign up to help. Ask a friend to join you who hasn't experienced the Friday morning fun yet, beginning at 10 ending by noon or earlier. The more people who sign up, the more fun and easier it is on everyone! Don't just think that "someone else will do it." We need you one and all. (Men and women wanted. No experience necessary.)

Contact Carol Blank to volunteer at  
(908) 272-7254 or mail2duck@aol.com

### Sponsor a Kiddish

Birthday, anniversary, baby, new job, retirement, good news, good health, good luck, goodbye...the reasons are infinite. The best reason? To support Sisterhood.

Sisterhood provides the Oneg and Kiddush each week it is not sponsored. We financially support the Religious School, library, USY and Kadima youth groups. We joyfully present B'nai Mitzvah gifts and donate to synagogue projects.

The Sisterhood Saturday Kiddush is prepared for the congregants attending services, approximately 30-40 attendees each week. The cost is 10 times Chai, \$180. Please pick a date and let us know what to write on your special cake.

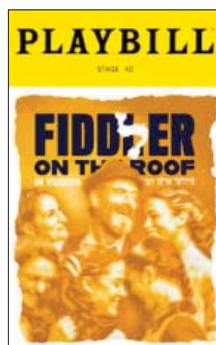
We appreciate your support!

## RUN TBEMC

Are you a runner? If so, consider joining our Run TBEMC community. We have an active email list where we schedule runs of various lengths and at various times. For more information, email Harold Roy ([hroy1@comcast.net](mailto:hroy1@comcast.net)).

## FIDDLER ON THE ROOF

Let's go "zuzamin" (together) to see "Fiddler on the Roof" in Yiddish with English supertitles.



### Date

Sunday, December 15, 2019

### Time

1:00 pm Pick-up at TBEMC

9:15 pm Estimated Return

### Dinner

Following the show, we'll have dinner at Ben's Kosher Delicatessen.

### Cost

\$150 per person for TBEMC members

\$160 non-members

### Includes

Tickets to the show, round-trip transportation, dinner at Ben's Kosher Delicatessen, transportation from theater to the restaurant and back to TBEMC.



We hosted a fantastic Bagels & Babies group in November



# BINGO



Men's Club annual Thanksgiving kids party with BINGO was a great success.



SISTERHOOD & MEN'S CLUB  
ANNUAL JOINT BRUNCH  
**FROM LIVERPOOL TO  
ABBEE ROAD**



Men's Club and Sisterhood hosted a joint brunch, and a Beatles expert shared stories and trivia about the band.

# Yahrzeit Announcements

## DECEMBER 1-6, KISLEV 3-8

Bess Fairberg, mother of Ruth Sperber  
 Arthur Ferdinand, husband of Carrie Ferdinand  
 Yetta Herman, sister of Ted Sheps  
 Herb Levenberg, father of David Levenberg  
 Herb Levenberg, husband of Roberta Phillips  
 Sylvia Wachtel, mother of Ramona Ehrich  
 Helen Likover, mother of Laura Rubin  
 Rose Silver, mother of Beverly Korman  
 Rose Freed, aunt of Jeffrey Krebs  
 Louis Galen, grandfather of Robert Galen  
 Nathaniel Kirsch, husband of Ruth Kirsch  
 Jack Schwartz  
 Joseph Shur  
 Leon Sperling, brother of Henry Sperling  
 Morris Banks, father of Alexander Banks  
 Fred Koenig, father of Susan Harris  
 Sol Mandell, father of Burton Mandell  
 Bertha Medlin, mother of Phyllis Schilder  
 Mary Rosenbaum, mother of Priya Okun  
 & Karen Rosenbaum  
 Fanny Wilensky, mother of Lola Baron  
 James Cook, father of Jacqueline Cheslow  
 Hassah Gitel Friedman, mother of Hy Friedman  
 Irene Goldberg, wife of Norman Goldberg  
 Joseph Teiger, father of Elaine Mittler  
 Rose Weiser  
 Julius Gross, father-in-law of Harriet Gross  
 Sue Kandl, mother of Lance Kandl  
 Toby Scher, mother of Florence Finkel

## DECEMBER 7-13, KISLEV 9-15

Harry Berkowitz, father of Davida Berkowitz  
 Samuel Gershman, grandfather of Annette Sarrazine  
 Lena Kirsch  
 Ann Schuldenfrei, mother of Harriette Koved  
 Alan Hatoff, husband of Blossom Hatoff  
 Lewis Kater, father of Barbara Potashkin  
 Max Salomon, father of David Salomon  
 Herman Schultz, father of Madeline Spitz  
 Elsie Siegfried, grandmother of Jack Siegfried  
 Elsie Siegfried, grandmother of Jane Kanig  
 Ruth Barde, mother of Susan Eisenberg  
 Louis Cohen, cousin of Bobbi Binder  
 William Eckel, son of Joan Eckel  
 Werner Gunther, father of Steven Gunther  
 Harry Levine, father-in-law of Sheila Levine  
 Ann Shulman, aunt of Audrey Silverman  
 Jack Stein, father of Mr. Philip Stein  
 Maurice Brateman, father of Jeffrey Farenback-  
 Brateman  
 William Isaac, father of Rich Isaac  
 Bryna Lulinski, sister-in-law of Libby Lulinski

Eva Oslick, mother of Harold Oslick  
 Stuart Roth, brother of William Roth  
 David Hecht, father of Meryl Bryant  
 Edward Liebowitz, of Beverly Kessler  
 Leonard Olesky, husband of Deirdre Olesky  
 Anna Siegel, great aunt of Ruth Kerr  
 Marion Grund, mother of Roberta Phillips  
 Haddassah Levitan, mother of Carla Berzon  
 J. Justin Rothschild, father of Gianine Handwerker  
 Fred Weiner  
 Sidney Jackson  
 Helen Pollins, mother of Roberta Rich  
 Rebecca Ross  
 Phillip Sperber, brother of Martin Sperber

## DECEMBER 17-20, KISLEV 10-22

Pauline Feldman, mother of Marilyn Kaback  
 Anna Grunwald, mother of Miriam Jarney  
 Ben Phillips, father-in-law of Roberta Phillips  
 Fanny Goldberg, aunt of Lola Baron  
 Max Lesser, father of Jonathan & Susan Lesser  
 Samuel Lutsky, father of Mrs. Estelle Meltzer  
 Beverly Applebaum Mc Donald, daughter of  
 Florette Applebaum  
 Abraham Bedrick, grandfather of Jane Abel  
 George Cohen, stepfather of Donald DuBow  
 Elaine Cohn, mother of Bobbi Binder  
 Fanny Marcus, mother of Morris Marcus  
 Fanny Marcus, mother of Edith Ross  
 Alex Mazur, father-in-law of Harriet Mazur  
 Klara Scheiber  
 Frederick Jawetz, brother of Stella Schecter  
 William Schwartz, brother of David Schwartz  
 Arnold Ehrich, husband of Ramona Ehrich  
 Harry Feldman, grandfather of Carrie Graifer  
 Judith Freund, mother of Nancy Heller  
 Al Gottschalk, of Jessica Hoff  
 Sarah Littman, mother of Marie Littman

## DECEMBER 21-27, KISLEV 23-29

Samuel Herbst, grandfather of Seymour Herbst  
 Dorothy Obolsky, mother of Linda Samolsky  
 Carol Schwartz, wife of Alan Schwartz  
 Irving Wilensky, father of Lola Baron  
 Mitchell Michaelson, husband of Estelle Herbst  
 Rose Sklon  
 Faye Brateman, mother of Jeffrey Farenback-Brateman  
 Meyer Foxman, grandfather of Gary Horowitz  
 Louis Kahn, father of Patti Kahn  
 Brianna Kaiserman, great-granddaughter of Milton Loshin  
 Mildred Lewis, mother of Robert Lewis  
 Barney Horne  
 Fanny Schoss, mother-in-law of Sadie Schoss



## Yahrzeit Announcements continued...

Helen Steinbach, mother-in-law of Dorothy Steinbach  
Solomon Ackerman, father of Aaron Ackerman  
Irwin Bernstein, husband of Liela Bernstein  
Lewis Heicklen, father of Linda Heicklen  
Marian Katz-Rosen, sister-in-law of Paulette Katz  
Sam Feldman, father of Marilyn Kaback  
Nathan Gittlin, father of Louis Gittlin  
Abraham Klein  
Max Mittler, father-in-law of Elaine Mittler  
Harry Schwartz, father of David Schwartz  
Lenny Semel, father of Mark Semel  
Shirley Boodish, mother of Mrs. Myra Stein  
Samuel Friedman, of Martin Friedman  
Lois Graifer, mother of Carrie Graifer  
Dorothy Kantor, mother of Marilyn Melcher  
Joseph Kantor, father of Marilyn Melcher  
Mickey Katcher, husband of Alice Goldfarb  
Mollie Knight, sister of Sidney Weingus  
Sidney Reitman, father of Michael Reitman  
Fred Springer, father of David Springer

### **DECEMBER 28-30, KISLEV 30-TEVET 2**

Irving Fishman, husband of Eleanor Fishman  
Glenn Lobel, brother of Rhondi Solomon  
Dora Soberman, mother of Liela Bernstein

Lena Barnett, mother-in-law of Dorene Barnett  
Dorothy Friedman, aunt of Sandra Schachter  
Pauline Jager, mother of Dorothy Steinbach  
Sam Rosenbaum, father of Priya Okun &  
Karen Rosenbaum  
Irving Silver, father of Beverly Korman  
Bessie Cuttler, grandmother of Jack Siegfried  
Leo Roberts, father of Carole Zapolsky  
Ruth Schimkowitz, mother of Alan & Lee Schimkowitz  
Alex Epstein, father of Gertrude Ackerman  
Dave Kornbluth, grandfather of Heidi Farber  
Dave Kornbluth, father-in-law of Bertram Fine  
Carole Leavitt, wife of Charles Leavitt  
Jack Levine, brother-in-law of Esther Levine  
Golda Varon, mother of Malca Novick  
Mary Borenstein, sister-in-law of Dorothy Sourifman  
Esther Heller, grandmother of Leo Finston  
Perl Korn, mother-in-law of Kurt Steiner  
Charlotte Kupferberg, mother of David Kupferberg  
Sol Merzel, father of Paula Figman  
Eric Rollman, father of Fred Rollman  
Eric Rollman, father of Richard Rollman  
Charles Rubenstein  
Izzy Rudman, father of Nina Greenwald  
Isaac Koch  
Daniel Schlosky, uncle of Bruce Solomon



# DONATIONS



*If there are any missing or miscategorized donations, please contact the office, so we can make sure it's corrected.*

## GENERAL DONATIONS

Jackie & Jerald Baranoff, in honor of David Salomon

## LIFELONG LEARNING COMMITTEE

Eric, Andrew and the Wealth CMT Team, in loving memory of Dorothy Steinbach

Allen & Julie Barkin, in loving memory of Dorothy Steinbach

Sandy & David Springer, in loving memory of Dorothy Steinbach

Susan & David Blain, in loving memory of Dorothy Steinbach

Talia Ben-Jacob, in loving memory of Dorothy Steinbach

Charles & Esther Colodner, in loving memory of Robyn Perlman

Harvan, Molly Sperling's granddaughter

## ABBIE HALPERIN LIBRARY & EDUCATION FUND

Libby Lulinski, in loving memory of Dorothy Steinbach

## SECURITY FUND

David & Sandy Springer, in loving memory of Gene Kaplan,

father of Tammy Kaplan

Lois & Leonard Waldman, in loving memory of Gene Kaplan,

father of Tammy Kaplan

## SISTERHOOD

Jaime Klinger, in honor of Brandon's bar mitzvah

Richard & Greta Polonitza, in loving memory of Robyn Perlman

Harvan, Moly Sperling's granddaughter

Alice Goldfarb

Roberta Kessler

Mindy Kipness

Mindi Metz

Debbie Kaplan

Molly Sperling

## RABBI DISCRETIONARY FUND

Mindy & Stanley Kipness, for a speedy recovery to Norbert Labine and Gregory Malamud

Mindy & Stanley Kipness in honor of Rabbi Kerbel's installation

Clarisse Kant, in loving memory of Fred Kant

Lois & Leonard Waldman, in loving memory of Doris Weingus

## RABBI INSTALLATION SPONSORS

Wilson and Gloria Aboudi

Janet and Elliot Ballen

Teri Schick and Art Belinker

Judith Bernstein

Russ Bleemer

Laura and Aaron Cohen

Judy and Gary Daniel

Jodi and Ken Danis

Davita E. Dulberger

Sam, Eddie, Liora and Amir Dressler

Adam and Adrienne Fitzer

Stephen and Annette Friedman

Phyllis Fried and Steven Goldberg

Alice Goldfarb

Marvin Greenberg

The Greenspon Family

The Haelgua Family

Abbie and Howard Halperin

Susan, Sarah and John Harris

Esther and Charlie Harrison

Linda Heikler

Renee and Donald Herz

Mark Hirschberg

The Jewish Federation of Greater Atlanta

Clarisse Kant

Debbie and Mark Kaplan

Judy and Donald Kaye

Linda and Gary Kendler

Rabbi Paul and Melissa Kerbel

Stanley and Mindy Kipness

Robert Klein

The Kopla Family

Rabbi Jay and Leslie Kornsgold

Andrea Lankin and Leah Garber

Fred and Ruth Lefkovic

Jeffrey, Bonnie and Ian Lerman

Lisa and Richard Levine

Suzanne Rivchun and David Lieberman

Libby Lulinski

Harriet Mazur

Tammy and Steve Merman

Malka Novick

Hedy and Randy Padawer

Phyllis and Elliot Pellman

Helen and Burt Putterman

Rica and Jack Rabinowitz

Adam and Rebecca Reissman

Suzanne Rivchun

David and Gail Salomon

Beverly and Michel Scher

Alan Schwartz

Raquel Gemar and Martin Schwartz

Steve and Sadye Seltzer

Mr. and Mrs. Myron Shrenker

Helayne & Amie Simon

Robin and Barry Simonson

Trudy and David Slifkin

Ellen and Lloyd Sokoloff

Stephen and Sidney Solomon

Henry and Mollie Sperling

David and Sandy Springer

Dr. Roslyn Stein

Sandra Sussman

David and Amy Thaler and Family

Dr. Harvey and Wilma Waldman

Rabbi Arthur D. Weiner

Art and Patty Werschulz

Shona and Bernard Young

Dr. and Mrs. Steven Zeld

# DONATIONS



## WE CARE / DONATIONS

Lawrence Posner, in honor of the birth of Gail & David Salomon's grandson  
 David & Sandy Springer, in honor of Gail & David Salomon receiving JFS award  
 Gail & David Salomon, in loving memory of Max Salomon  
 David & Sandy Springer, in loving memory of Ellen Wollenberg  
 David & Sandy Springer, in loving memory of Stella Springer  
 David & Sandy Springer, in loving memory of Kurt Steiner  
 David & Sandy Springer, in loving memory of Rebecca Nadler

## Yahrzeit Donation

Neil Mayer, in loving memory of Rita Mayer  
 Harold & Marlene Oslick, in loving memory of Stephanie Oslick  
 Clarisse Kant, in loving memory of Lillian Feldman  
 Clarisse Kant, in loving memory of Irving Feldman  
 Sybil Kramer, in loving memory of Doris Weingus  
 Alice Goldfarb, in loving memory of Seymour Gerson  
 Judith Bernstein, in loving memory of Sonia Bernstein  
 Harold & Helaine Cohen, in loving memory of Lester Cohen  
 Janet & Elliot Ballen, in loving memory of Rosalind Ballen  
 Don Shapiro & Nancy Lubarsky, in loving memory of Gladys Lubarsky  
 Marilyn Kaback, in loving memory of Regina Kaback  
 Rae Kane, in loving memory of Allan Kane  
 Rae Kane, in loving memory of Shirley Riesenbergs  
 Barry & Jane Kanig, in loving memory of Rhea Siegfried  
 Jack Siegfried, in loving memory of Rhea Siegfried  
 Carol Steuer & Herbert Marton, in loving memory of Rose Spector  
 Carol Steuer & Herbert Marton, in loving memory of Joy Veron's sister, Carrie Sue Coddington  
 Ruth Kerr, in loving memory of Dora Bunis  
 Ruth Kerr, in loving memory of Selig Bunis  
 Ruth Kerr, in loving memory of Harbert Bunis  
 Anonymous, in loving memory of David Schwartz's brother  
 Jonas & Linda Leifer, in loving memory of Jack Franzman  
 Eleanor Fishman, in loving memory of Molly Tanenbaum  
 Eleanor Fishman, in loving memory of Louis Fishman  
 Milton & Lorraine Loshin, in loving memory of Leonard Sattler  
 Fred, Gail, Gregory, Jeffrey and Alison Rollman, in loving memory of Eric J. Rollman on his 30th yahrzeit  
 David Salomon, in loving memory of Max Salomon  
 Irwin Rappaport, in loving memory of David Rappaport  
 Irwin Rappaport, in loving memory of Irene Gromfin  
 Roberta Phillips, in loving memory of Max Grund  
 Donald & Renee Herz, in loving memory of Alice Ben Basset  
 Paul & Helene Graboff, in loving memory of Esther Graboff  
 Sharlene Barr, in loving memory of Sylvia Barr  
 Sharlene Barr, in loving memory of Samuel Barr  
 Norman & Marilyn Gross, in loving memory of William Bilow  
 Gail Stockwell, in loving memory of Gail Stockwell  
 Gail Stockwell, in loving memory of David Rubinstein  
 Sandra Sussman, in loving memory of Stuart Sussman  
 Sandra Sussman, in loving memory of Myron Tepper  
 David Watter, in loving memory of Bernard Watter  
 Neil & Cindy Watter, in loving memory of Bernard Watter

The Temple office can help you decide what the best giving opportunity is for you

908-276-9231 x10 or [office@tbemc.org](mailto:office@tbemc.org)

Please consider donations to these other charitable funds at TBEMC

Yahrzeit Fund

Rabbi Discretionary Fund

Stuart Kaback Memorial Fund

Accessibility Project Fund

Halperin Library & Education Fund (HLEF)

Temple Fund

We Care Fund

Dora Haleva Fund

Holocaust Garden fund

Metzger Memorial Fund

Youth Education Trust Fund

Cantor Discretionary Fund

Simcha Fund

Doris Bloomfield Fund

Men's Club Fund

Religious School Fund

Shiva Meal Fund

JNF Tree Fund

Sisterhood Fund

We Gratefully Acknowledge

These Donations Made to

Temple Beth-El Mekor Chayim

## CAR DONATION

A huge thank you to David and Amy Thaler, and Phyllis and Lance Kandl for the donations of their used cars. The proceeds of these donations are critical to supporting our community.

To donate your used vehicle visit:

[careasy.org/nonprofit/](http://careasy.org/nonprofit/)

Temple-Beth-El-Mekor-Chayim

Contact Mark Kaplan at

[president@tbemc.org](mailto:president@tbemc.org)

with any questions



# Mazel Tov מזל טוב

The Sisterhood Saturday Kiddush is prepared for the congregants attending services, approximately 30-40 attendees each week. Share your simcha with your temple family. A simple Kiddush with special cake starting at \$180.00

Call Gail Salomon (908) 272-5444 or Carol Blank (908) 272-7254 to discuss options.



Sisterhood provides the Oneg and Kiddush each week it is not sponsored. We financially support the religious school, library, USY and Kadima youth groups, joyfully present B'nai Mitzvah gifts, and donate to synagogue projects.

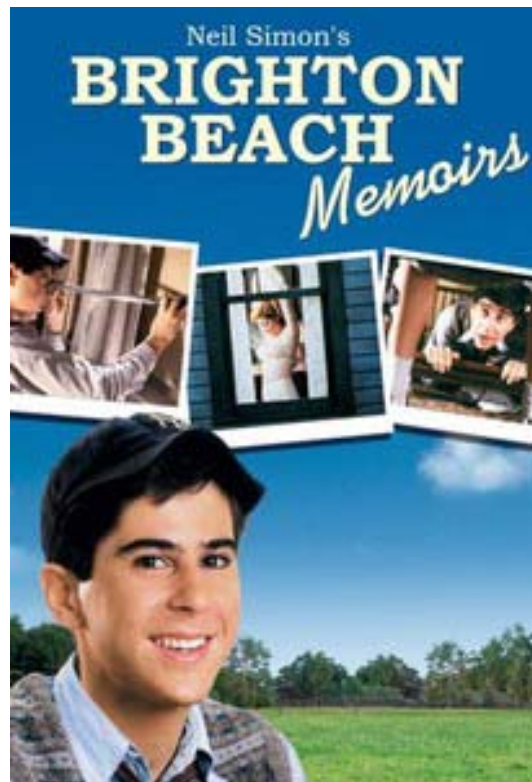
**Support Sisterhood Support Your Synagogue**

THE LIFE-LONG LEARNING COMMITTEE of TEMPLE BETH-EL MEKOR CHAYIM  
Presents

## **"THE JEWISH CONNECTION TO COMEDY" FILM SERIES**

We all could use a laugh and each film in our series will have  
Jewish content, Jewish characters and/or Jewish themes

Our Next Film is  
**"BRIGHTON BEACH MEMOIRS"**  
SUNDAY, DECEMBER 29, 2019 @ 4:00 PM



The first of Neil Simon's "Eugene Trilogy," "Brighton Beach Memoirs" is the coming-of-age story of Eugene Jerome as he tries to cope with his "annoying" extended family in Depression-era Brooklyn.  
Stars Jonathan Silverman, Blythe Danner, Bob Dishy and Judith Ivey

# Join Temple Beth-El Mevor Chayim's

## Adult Israel Experience

LED BY

**Rabbi Paul Kerbel**

**June 7 - 19, 2020**

**Eilat - Petra Extension June 18 - 21, 2020**

View and download itinerary and application at [www.israeltour.com/rkerbel](http://www.israeltour.com/rkerbel)

### Tour Pricing

#### DISCOUNTED PRICE FOR CHECK PAYMENT

Land Only Package - \$3995

per person in a double room

Land and Air Package - \$5315

per person in a double room

Single Room Supplement - \$1360

#### FULL PRICE FOR CREDIT CARD PAYMENT

Land Only Package - \$4147

per person in a double room

Land and Air Package - \$5520

per person in a double room

Single Room Supplement - \$1415

#### REDUCTIONS

3rd Adult in a room: -\$425

### Tour Package Includes

Hotels: Dan Panorama Tel Aviv, Mt Zion Jerusalem, Kibbutz Kibbutz Lavi in the north  
All Breakfasts, Friday night "Shabbat" Dinner and Lunch, 5 Weekday dinners and 2 lunches as per itinerary  
Touring with Rabbi Kerbel and one of Israel's Top Tour Guide educators in a WiFi enabled deluxe touring Motor Coach

### A Few Tour Highlights

Plant a tree in Neot Kedumim, Israel's biblical landscape reserve  
Guided tour of the Ayalon Institute - an underground bullet factory  
Tour the alleys of Old Jaffa, the ancient port city once known as the Gate of Zion  
Shekhiyanu-Welcome ceremony on top of Tel Jaffa overlooking modern Tel Aviv  
Tour the ruins of Caesarea, including Roman Theater, Promontory Palace, Hippodrome and Amphitheater  
Old synagogues and picturesque alleys of Tzfat, cradle of Kabbalah (Jewish mysticism) in the 16th century  
Walk in the lush Tel Dan Nature Reserve, one of the sources of the Jordan River, Kayak down the Jordan  
Tour the Golan Heights, special security briefing on Mt. Bental by Lieutenant Colonel (res.) Sarit Zehavi  
Wine tasting at the boutique Bahat Winery on Kibbutz Ein Zivan, BBQ dinner with young Israeli soldiers. Explore the bustling  
Machane Yehuda Market and take in a slice of local life  
Greet the Sabbath at the Western Wall. Option to pray together at the egalitarian "Masorti Kotel"  
Shabbat morning services at Conservative/Masorti synagogue, Kiddush, sponsored by Rabbi Kerbel  
Briefing on Israeli Politics by Steve Linde, editor-in-chief of the Jerusalem Report  
Explore the City of David, including its ancient water systems  
Set out across the Judean Desert to the Dead Sea, Swim in the Dead Sea  
Tour the ruins of Qumran, where the Dead Sea Scrolls were found and hear about the aesthetic Jewish sect  
Masada by cable car to tour the ruins of Herod's palace and the last outpost of Jewish independence. Lecture  
on Religious Pluralism in Israel and the Masorti Conservative Movement by Rabbi Andy Sacks

**Optional Eilat-Petra Extension: June 18-21, 2019 - Price per person based on double occupancy**  
4-5 Participants: \$1398 • 6-7 pax: \$1335 • 8-9 pax: \$1295 • 10 pax: \$1225 • tips for extension \$40

For additional information please contact Rabbi Paul Kerbel by email at [rabbi@tbemc.org](mailto:rabbi@tbemc.org) or call Rabbi 908-276-9231

Tour arranged by ITC Tours call Janine at 973-535-2575 or email [janine@israeltour.com](mailto:janine@israeltour.com)

Added to the costs above are tips for Guide, Driver, Restaurants, and Portage - \$195

\*Tour price is based on 15 participants; price will increase with less participants and be reduced at 20 or more participants

*"One does not travel to Jerusalem, one returns."*







# HANUKKAH, LATKES AND BINGO

## ***PERFECT TOGETHER!***

**COME TO TBEMC'S SENIOR MONTHLY GATHERING ON  
TUESDAY, DECEMBER 10th at 11:00am  
FOR HANUKKAH BINGO, LATKES, PRIZES AND GIFTS!**

**AS AN ADDED BONUS, SISTERHOOD'S GIFT SHOP  
WILL BE OPEN FOR YOUR HOLIDAY SHOPPING!**

**LUNCH** WILL BE SERVED IMMEDIATELY FOLLOWING THE PROGRAM  
\$5 donation suggested for TBEMC members and caregivers  
\$10 suggested donation for non-TBEMC members  
**PLEASE RSVP TEMPLE OFFICE, 908-276-9231**

\*This program is sponsored by the Elder Law Firm of  
Fink Rosner Ershow-Levenberg, LLC





**IT'S SISTERHOOD RAFFLE TIME AGAIN!**

**PLEASE SUPPORT TBEMC'S SISTERHOOD!!!**

***DRAWING WILL BE HELD ON TUESDAY,  
DECEMBER 17th, 2019***

1st Prize.....\$250 Amazon Gift Card  
2nd Prize.....\$125 in ShopRite Gift Cards  
3rd Prize..... \$50 Gift Certificate for Deli-King of Clark  
4th Prize..... \$50 Gift Certificate for Simply Gifts and Framing of  
Cranford

Drawing will be held at 9:00pm on Tuesday, December 17th at Sisterhood's Paid up Membership Meeting. You do not need to be present to win. All winners will be notified. Sisterhood welcomes new members! We will happily accept membership that evening. Dues are \$36/year. New Temple members enjoy free membership their first year!

Please return your stubs (the ones with your name, address and contact information), unsold tickets and money as soon as possible ***in the enclosed, specially marked envelope.*** Please write legibly!

**VERY IMPORTANT: PLEASE MAKE SURE YOU WRITE THE  
WORD "RAFFLE" ON THE MEMO LINE OF YOUR CHECK.  
MAKE YOUR CHECK PAYABLE TO SISTERHOOD, TBEMC**

so that it will be directed to the appropriate account. Raffle tickets are \$3 each or \$18 per book.

If you need extra books, call Karen Platt at 908-272-5376 or 908-400-7759. All raffle books, unsold tickets and money must be returned to the synagogue by the date of our meeting and drawing, Dec 17th.

# EARN MONEY FOR **TBEMC** & DONOR CREDIT FOR YOU WHILE YOU SHOP!

**Everything you ever wanted to know about raising money for the Temple by shopping with gift cards (scrip).**

## **What is it?**

The TBEMC Sisterhood's Gift Card program sells scrip for all of the local grocery stores.

## **How does it work?**

Participating retailers agree to sell the gift cards to us at a discount. You buy the cards at face value, and the synagogue keeps the difference. You get to participate in an important fundraiser, and it costs you absolutely nothing extra! You can use these convenient gift cards for your regular shopping or to give as gifts!

## **How can you participate?**

We make it easy! Vouchers are available weekdays in the Temple Office, during any Sisterhood meeting or event, or by contacting the Temple office or the chairperson, Barbara Goodgold (908-276-6634).

## **What else do you need to know?**

Sisterhood members earn 5% of their purchase price in donor credit, which covers the cost of attending the Donor Dinner Celebration in June.

Gift cards from these participating retailers are available in stock.

## **Groceries and Food:**

**Acme  
Shoprite  
Stop & Shop  
Kings  
Maple Kosher**

## **More Questions?**

Contact Barbara Goodgold at 908-276-6634.







TBEMC RELIGIOUS

SCHOOL AND KADIMA

**December 15, 2019**

**11:00 am - Zimriyah | 12:00 pm - Joint Hanukah Party**

# **ZIMRIYAH**

**and joint HANUKAH PARTY**

**NO COST TO ATTEND ZIMRIYAH**

**Food Cost: Pizza | Sufganyot | \$5 PP | \$20/Family 4 +**

Join us for TBEMC's annual songfest followed by a joint Kadmia & Religious School Hanukah Party. Entire TBEMC community invited and grandparents too.

Air dried clay menorah making for grades 3 and up.

Other holiday crafts for younger children.

Leading our Zimriyah and back by popular demand from High Holiday family service: Acclaimed Israeli musician and educator Shirel Gidekel.

Temple Beth-El Mevor Chajim

338 Walnut Ave., Cranford

908-276-9231 | [www.tbemc.org](http://www.tbemc.org)

**RSVP**

**[bit.ly/RS-RSVP](http://bit.ly/RS-RSVP)**

Made with PosterMyWall.com

SAVE THE DATE  
TBEMC PRESENTS

# TRIVIA? NIGHT!

*Saturday*

**February 29, 2020**

DOORS OPEN AT 7:30 PM | TRIVIA BEGINS AT 8:30 PM

**EAT DRINK & TEASE YOUR BRAIN!**

**PRIZES RAFFLES**

TRICKY TRAY | SILENT AUCTION

TEAMS OF 8 PLAYERS  
WATCH FOR REGISTRATION DETAILS  
TABLES FILL UP FAST!

**TEMPLE BETH-EL MEKOR CHAYIM**

338 WALNUT AVENUE, CRANFORD, NJ  
908-276-9231 | [OFFICE@TBEMC.ORG](mailto:OFFICE@TBEMC.ORG)



**SAVE THE DATE**

# **Community Inclusion Weekend**

Join the TBEMC journey and learn how we welcome all people to our Jewish home. Presentations and programs all weekend long. Kiddush, oneg, dinners and more! Details to follow shortly.

Featuring renowned author, speaker and Jewish inclusion innovation expert Shelly Christensen

**February 7-9, 2020**

**Temple Beth-El Mekor Chayim**

**338 Walnut Avenue, Cranford NJ**

**908-276-9231**

**[office@tbemc.org](mailto:office@tbemc.org) | [www.tbemc.org](http://www.tbemc.org)**

**All are welcome and invited. Members and non-members.**

This program is made possible in part by support from the Jewish Federation of Greater MetroWest of NJ's, Greater MetroWest ABLE, the Gary Aidekman Family Foundation, and the Sylvia and Seymour Rubenstein Special Needs Endowment Fund





## WE GRATEFULLY ACKNOWLEDGE THE MEMBERS OF THE TBEMC LEGACY CIRCLE

Jaclyn Baranoff	Jerald Baranoff	Allen Barkin
Julie Roffé Barkin	Carol Blank	Bernice Bedrick*
Spencer Brooks	Laura Cohen	Aaron Cohen
Charles Colodner	Gary Daniel	Judith M. Daniel
Susan Burde Eisenberg	Kenneth S. Eisenberg	Linda Ershow-Levenberg
David Levenberg	Heidi Farber	Leonard Farber*
Bertram Fine	Joan Finkelstein	Alice Gerson Goldfarb
Gary Goodman	Marvin Greenberg	Abbie Raicer Halperin
Howard Halperin	Lance Kandl	Phyllis Kandl
Fred Kant*	Clarisse Kant	Mark Kaplan
Deborah Kaplan	Frederic Kessler	Roberta Kessler
Sam Kimmelman	Jerome Krueger	Charles Leavitt
Sheila Levine	Mildred Lewis*	Nancy Lubarsky
Robert Meth/Estate of Meth	Martin Metzger	Rosi Metzger
Harold Oslick	Marlene Oslick	Lawrence H. Posner
Irwin & Thelma Rappaport	Rosalind Reiss	Adam Reissman
Rebecca Reissman	Roberta Rich	Laura Rubin
David Salomon	H. Gail Salomon	Rochelle Schwartz
David Schwartz	Alan Schwartz	Donald Shapiro
Charles Sporn	Trudy Springer*	Sandra Springer
David Springer	Myra Stein	Phillip Stein
Laurie Steinbach	Stephen Steinbach	Lois Rabbino Waldman
Len Waldman	Joy Weinstock	Michael Weinstock
Patricia Werschulz	Arthur Werschulz	

Each of these people has made a future gift to assure the survival of TBEMC. Thank you so much to each Legacy Circle member for caring and committing! You too can join the Legacy Circle by reaching out to David Springer at 908-370-1890 or Laura Cohen at 908-389-1744. \*Of blessed memory



I/We have **also** made provisions, **and will complete a separate form**, for a legacy gift to the following community partner organization(s):

- ☐ Adath Shalom
- ☐ Bnai Keshet
- ☐ Congregation Agudath Israel
- ☐ Congregation Beth Israel, Scotch Pl
- ☐ Congregation B'nai Israel, Millburn
- ☐ Congregation Ohr Shalom-Summit JCC
- ☐ JCC of Central NJ
- ☐ Jewish Family Service, Central
- ☐ Jewish Family Service, MetroWest
- ☐ Jewish Service for the Developmentally Disabled
- ☐ Morristown Jewish Center Beit Yisrael
- ☐ Mt. Freedom Jewish Center
- ☐ Oheb Shalom Congregation
- ☐ Temple Beth Ahm Yisrael
- ☐ Temple Beth O'r Beth Torah
- ☐ Temple Beth Shalom
- ☐ Temple Beth-El Mekor Chayim
- ☐ Temple B'nai Or
- ☐ Temple Emanu-El, Westfield
- ☐ Temple Sinai, Summit
- ☐ YM-YWHA of Union County
- ☐ Other \_\_\_\_\_

**Please return this form to the organization(s) you designated or to:**

Karen Secular, Program Manager  
Jewish Community Foundation  
901 Rt. 10, Whippany, NJ 07981  
973-929-2918  
ksecular@jfedgmw.org

**Thank you for taking this beautiful step to secure a strong Jewish future.**

## Confirmation of Commitment

I/we \_\_\_\_\_ have made provisions for a legacy gift to \_\_\_\_\_.

My/Our gift is in the approximate amount of \$ \_\_\_\_\_, **OR** \_\_\_\_\_ % of my/our estate or plan, and was completed through (check a box, please):

- |   |   |
|---|---|
| <input type="checkbox"/> Bequest/Will                               | <input type="checkbox"/> Life Insurance             |
| <input type="checkbox"/> Retirement Plan Assets (e.g., 401(k), IRA) | <input type="checkbox"/> Charitable Remainder Trust |
| <input type="checkbox"/> Estate or Business Interest                | <input type="checkbox"/> Other _____                |

**(Please Print Clearly or Type)**

Donor Name \_\_\_\_\_ Date of Birth \_\_\_\_\_

Donor Name \_\_\_\_\_ Date of Birth \_\_\_\_\_

Name(s) as you wish them to appear for formal recognition (without titles) \_\_\_\_\_

Street Address \_\_\_\_\_

City, State, Zip \_\_\_\_\_

The BEST phone number(s) to reach you. Please indicate cell or home. \_\_\_\_\_

Email Address or Addresses \_\_\_\_\_

**Please check all that apply:**

- ☐ You have permission to **recognize me/us publicly** (without gift type or amount)
- ☐ I/We would like our gift to remain **anonymous** at this time.
- ☐ I/We understand that you will inform the **designated organizations** of this gift.
- ☐ Please have a Jewish Community Foundation staff member contact me for a confidential conversation regarding my legacy gift.

*I/We understand that this commitment is revocable and may be modified at my/our discretion. I/We will endeavor to notify the recipient organization(s) accordingly.*

Donor Signature \_\_\_\_\_ Date \_\_\_\_\_

Donor Signature \_\_\_\_\_ Date \_\_\_\_\_

Recipient Organization Representative Signature \_\_\_\_\_ Date \_\_\_\_\_



# **TBEMC ADVANCE COMMITMENT**

# **SPNSORSHIP OPPORTUNITIES**

## **A SUPPLEMENTAL PATHWAY OF GIVING**

### **DESCRIPTION AND CONCEPT**

TBEMC is a really active place with many recurrent activities that we provide every year. While our Sustaining Pledge Model is the major means by which we support our operations, our experience here at TBEMC is that people enjoy sponsoring specific projects or purchasing specific items as a member.

This program gives you the opportunity to do both. It enables the congregation to plan in advance.

### **RECOGNITION AND PUBLICITY**

The person who sponsors the event will be recognized in the programs or publicity related to the event.

### **HOW TO PARTICIPATE**

Below is the form that needs to be filled out, signed and returned to the temple office. Members, their families and their businesses can be sponsors. For each sponsorship opportunity, payment in full now is needed for events occurring in September & October. After October payments are due to the office no later than 60 days prior to the event. We are asking for credit card authorization as a back-up if payment in full isn't received in time to enable the event to go forward as planned. If the sponsorship is for a non-event the payment is due in full.

### **FIRST COME, FIRST SERVED**

If more than one person sends in a request to be the sponsor, the first person whose form is received will be given that opportunity and we will call the subsequent donor.

### **ONE YEAR AT A TIME**

Each year is a new year, and one year's commitment doesn't obligate somebody to do it again.

### **CO-SPONSORING**

You can be a co-sponsor if you line up the other co-sponsor(s) to cover the full cost, and they also submit their forms.

### **EVENT PLANNING**

A Sponsor/Donor who is a TBEMC Member can be involved as a committee member with the event planning .

**QUESTIONS? Linda Ershow-Levenberg 908-351-9310 or  
908-507-2366 - [Linda.Ershow.Levenberg@gmail.com](mailto:Linda.Ershow.Levenberg@gmail.com)**



# TBEMC ADVANCE COMMITMENT

# SPONSORSHIP OPPORTUNITIES

	Sponsorship	Cost
	<b>Library Acquisitions</b>	
1	Library Acquisitions (12 Mo-Rqrd)	\$25 a month
	<b>Flowers</b>	
2	Bima Flowers for special Events	\$300 each
3	High Holiday Bima Flowers	\$500
	<b>New Member Events</b>	
4	Wine and Cheese reception	\$350
5	Bagels & Babies	\$100
6	Friday Night New Member Kabbalat Shabbat	\$350 Each
	<b>Children Religious School</b>	
7	Rosh Hashanah Shofar Workshop	\$350
8	RH and YK Family and Youth Programs	\$300 each
9	Lulavi Etrog sets(3) for Religious School	\$180 each
10	Sukkot chol ha'moed events	\$250 each
11	Hanukkah Religious School Party	\$500
12	Pesach model Seder	\$500
13	Pesach Matzah Making Workshop	\$180
14	Siddur Ceremony Refreshments	\$360
15	Teddy Bear Sleepover	\$100
16	Patron of our special needs students	\$1000 each
17	Sponsor a Students Tuition	\$885
18	Religious School Leadership Development - 4 staff	\$1000 each
19	Supporting teen teaching Madrichim (6 teaching assistants)	\$500 Each
	<b>Full Congregation Events</b>	
20	Kabbalat Shabbat newly installed Board	\$180
21	High Holiday Baby Sitting	\$300
22	Yizkor Book Printing	\$500
23	Erev Simchat Torah refreshments	
24	Simchat Torah Lunch (taken)	\$675
25	Sukkot chol ha'moed events for adults	\$750
26	TuB'shevat Seder	\$360
27	Erev Purim Snacks, graggers and supplies	\$250
28	Purim Carnival	\$500
29	Second Night Seder	\$575
30	Shavuot Cheesecake /refreshments	\$225
31	Senior monthly gathering (taken)	\$1,500

32	Sponsor a Shabbat Dinner	\$750 each
33	Sponsor a Tot Shabbat with dinner	\$750
34	Friday Oneg	\$180 each
35	Saturday Kiddush	\$360 each
36	TBEMC has been invited to be a "Signature Synagogue" of The Anti-Defamation League a lead synagogue in teaching about and engaging in education about anti-Semitism	\$500
37	Sponsor Rabbi Kerbel's two summer lunch and learns	\$500 each
	<b>Office &amp; Administration</b>	
38	Computer	\$1,500
39	Adobe Creative Cloud	\$624/year
40	Constant Contact Email marketing	\$500
41	Website expenses (12 Month-Required)	\$30/month
42	Postage - Yahrzeit letters (12 Mo-Rqrd)	\$25/month
43	Floor Polisher	\$950
44	Advertising: Newspaper, online and direct mail advertising. 12 month-Rqrd)	\$50/month
	<b>Ritual Needs</b>	
45	20 copies new Rabbinical Assembly Pirkei Avot Lev Shalem for chapel for study and adult learning	\$550
46	20 Copies of new Rabbinical Assembly Mahzor Lev Shalem for chapel for study and adult learning	\$550
	<b>Rabbi's Office</b>	
47	Dedicate the Rabbi's office Furniture and accessories by contacting Rabbi Paul Kerbel individually. -Computer, Desk Lamp, Standing light, Desk with side hutch and table, computer table with shelves and drawers, 3 Large bookshelves 6 shelves wide,	Discuss with Rabbi
	<b>Tzedakah Opportunities</b>	
48	Purchase gift cards for ShopRite from the temple, for the Rabbi to give to families in need of food.	purchase in increments of \$50 and \$100

# TBEMC ADVANCE COMMITMENT

# SPNSORSHIP OPPORTUNITIES

## A SUPPLEMENTAL PATHWAY OF GIVING

Name \_\_\_\_\_

Address \_\_\_\_\_

Phones \_\_\_\_\_ Email: \_\_\_\_\_

Credit Card Type: \_\_\_\_\_ Expiration Date: \_\_\_\_\_

Account # \_\_\_\_\_ Security Code: \_\_\_\_\_

I will sponsor the following event/project/program(s) per the attached Please include sponsorship number from the list below.

Sponsorship number #	Sponsorship Description	Amount Sponsoring
_____	_____	_____
_____	_____	_____
_____	_____	_____

I will provide payment 60 days prior to the event in question. All event sponsorships in September and October are due now. I understand that if my payment is not received by the temple office by the due date, my credit card will be charged, and I authorize the temple to do so.

Signature: \_\_\_\_\_ date signed: \_\_\_\_\_

**QUESTIONS? Linda Ershow-Levenberg 908-351-9310 or  
908-507-2366 - [Linda.Ershow.Levenberg@gmail.com](mailto:Linda.Ershow.Levenberg@gmail.com)**

**SOMETIMES WE ALL NEED A LITTLE HELP**



**TBEMC CAN PROVIDE MEDICAL EQUIPMENT  
TO TEMPLE MEMBERS ON A PERMANENT  
OR TEMPORARY BASIS**

*FREE OF CHARGE*

**CONTACT THE TEMPLE OFFICE  
(908) 276-9231**

**A WE CARE REPRESENTATIVE WILL  
CONTACT YOU DIRECTLY**



# TBEMC Wall of Community



## New tiles are going up on our community wall:

In memory of Millie Lewis, Brenda Klein, Lewis & Martha Heicklen, Ted Spitz, Simon & Irene Holtz Raicer (parents of Abbie Halperin), Ann & Samuel Halperin (parents of Howard Halperin)

To commemorate the Davidson family & the Bar/Bat Mitzvahs of Cole & Chase Turnof, Micah Berger, Amelia Bluman (granddaughter of Jonas & Linda Leifer)

To celebrate the marriage of Mitchell & Marina Merman and the birth of Steve & Tammy Merman's grandson

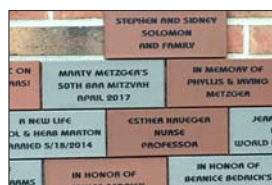
Why don't you join them and other congregants?  
Become a part of this ongoing project; add to the wonderful menorah sculpture on our building. Watch it grow!

## Commemorate the past. Celebrate the present. Inspire the future.

Join Temple Beth El Mekor Chayim's permanent tribute to those who have been a part of our community. Commemorative wall tiles, engraved with an inscription of your choosing, will honor your loved ones, family, friends, and celebrate important events in your life. Add to the inspiring tiles that have placed on the exterior wall entering the front of the building for all to see. Each permanent tile is only \$180. Each tile can have three lines of text, 20 characters in each line. Order forms are available.

If you are interested in reserving your commemorative tile online with a credit card, go to [www.TBEMC.com](http://www.TBEMC.com) and look for information about the commemorative tiles or mail in your check with the wording you want inscribed.

More information or questions: Sandy Springer, 908-507-3291 or [sprfamily@verizon.net](mailto:sprfamily@verizon.net)  
Samples of some tiles already installed are below.



BRIAN T. DENNY PH. 908-276-8062  
ARNOLDSPESTCONTROL@GMAIL.COM

### ARNOLD'S PEST CONTROL, INC.

COMPLETE TERMITE & PEST CONTROL SERVICE



INTEGRATED PEST MANAGEMENT  
WWW.ARNOLDSPESTCONTROL.COM



INDUSTRIAL  
COMMERCIAL  
RESIDENTIAL

9 QUINE STREET  
CRANFORD, NJ 07016

### SCHWARTZ BARKIN & MITCHELL

Attorneys at Law

1110 Springfield Road  
Union, New Jersey 07083-1339  
(908)688-1644 FAX (908)688-9530  
www.sbmcsq.com  
sbarkin@sbmcsq.com

Commercial • Real Estate • Family • Collections  
Estate Planning • Employment • Education  
Appellate • Municipal Court • Land Use • Litigation

HOWARD SCHWARTZ  
ALLEN J. BARKIN  
GAIL J. MITCHELL  
ALDAN O. MARKSON  
DAVID WENDEL



Residential and Commercial Service  
Scotch Plains, NJ • 908-222-1566  
grandsanitation.com

INVESTMENT/MANAGEMENT  
DIVISIONS

(908) 686-1800  
Fax (908) 686-1839



MITCHELL KRAMER



BROUNELL

KRAMER REALTORS

1435 MORRIS AVENUE, UNION NEW JERSEY 07083

Like us on Facebook!



If you are a member of Facebook, you can help TBEMC by sharing our news, stories and promotions about social and fund raising events.

You can simply hit the "SHARE" button to share all that we do with your family and friends who may be interested in some of the things that we do at TBEMC.

We have two Facebook pages, one for the general synagogue and one for religious school. If you haven't already, please like both pages. The links are below. Then you can easily hit the "SHARE" button each time exciting news and events appear on your page!

TBEMC MAIN TEMPLE LINK  
<https://www.facebook.com/TBEMC/>

RELIGIOUS SCHOOL LINK  
<https://www.facebook.com/Temple-Beth-El-Mekor-Chayim-Religious-School-185439761483723/>

EUROPEAN WAX CENTER®  
THE ULTIMATE WAX EXPERIENCE

FREE\*  
BODY WAX  
FOR FIRST TIME GUEST

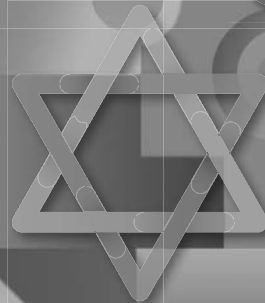
520 North Ave. in Garwood  
(Across from ShopRite, next to Massage Envy)  
908.789.1515 or [www.waxcenter.com](http://www.waxcenter.com)

The Weisman Family \*Call for details  
OPEN 7 DAYS

# CELEBRATE HANUKKAH



with  
gifts  
of  
**ISRAEL  
BONDS**  
ISRAELBONDS.COM



Development Corporation for Israel  
David Brown, Registered Representative  
Livingston, NJ 07039  
david.brown@israelbonds.com • 973.712.1404

This is not an offering, which can be made only by prospectus. Read the prospectus carefully before investing to fully evaluate the risks associated with investing in Israel bonds. Member FINRA.  
Vector dreidels and menorah: iStock

  
BOND WITH A NATION  
OF LIMITLESS POTENTIAL  
israelbonds.com

## **Beckerman & Company** Professional Insurance Managers

**We represent over 25 insurance Carriers offering competitive choice  
for all your *Business & Personal Insurance Needs!***

***www.beckermanco.com***

**430 Lake Avenue  
(732) 499-9200**

**Colonia, NJ 07067  
Fax (732) 499-9050**





**BRAVO**  
**PRINT & MAIL**

**Pat Conway**

T: 201.806.3750  
F: 201.806.3760

pat@bravonyc.com  
491A Washington Ave.  
Carlstadt, NJ 07072

Thank you to Bravo Print & Mail for doing a Mitzvah for TBEMC

Office Hours By Appointment



**DANIEL T. GINTER, D.M.D.**  
*Oral and Maxillofacial Surgery*  
Specialty Permit #2890

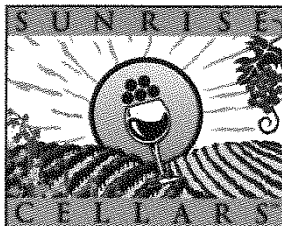
**34 Forest Avenue**  
**Cranford, New Jersey 07016-2412**  
**Telephone: (908) 272-3950**  
**Fax: (908) 709-3710**

**BERNHEIM APTER**  
**REITZMAN**  
*Suburban Funeral Chapel*

68 Old Short Hills Road • Livingston, NJ 07039  
(973) 422-0600 • Fax (973) 422-0606  
(800) 938-6372



LICENSED MANAGER: LOUIS J. URBAN NJ Lic. No. 3537  
RICHARD M. SCHUELE NJ Lic. No. 4043



**ShopRite**  
**Wines and Spirits**  
**of Westfield**

**Ken Kimble**  
Store Manager  
908-232-8700 phone  
908-232-8099 fax

**333 South Avenue East, Westfield, NJ 07090**  
ken.kimble@sunrisecellars.com

(732) 574-2040

**DELI KING CLARK**

Restaurant/Catering/Delicatessen

30 Clarkton Drive  
Clark, New Jersey 07006

(Located in the Clarkton Shopping Center)

*Jewish Hospice Care*



- Excellent Nurse to Patient Ratio
- Home Health Aide Support for Family
- Bereavement Support Monthly Meeting
- Complementary Chicken Soup plus Harp and Massage therapies

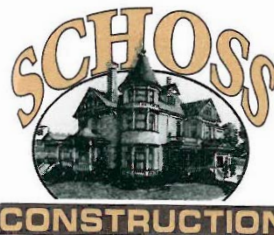


**STEIN HOSPICE**  
*at The Oscar and Ella Wilf Campus for Senior Living*

**49 Veronica Ave., Suite 206**  
**Somerset, NJ 08873**  
**(732) 227-1212**  
**www.SteinHospiceNJ.org**

Serving Union, Middlesex,  
Somerset and Monmouth Counties

*Accredited by the National Institute  
for Jewish Hospice*



**Ethan Schoss**  
P.O. Box 969  
Scotch Plains, NJ 07076

Office: 908-889-9042  
Fax: 908-822-8840  
www.schossconstruction.com