

November 2019
Cheshvan-Kislev 5780

TEMPLE BETH EL MEKOR CHAYIM

Contents

From the Rabbi	1
Family Shabbat Service	2
Antisemitism Speaker.....	3
Simchat Torah Honorees.....	4
Create a Jewish Legacy	5
Classes.....	6
Bar Mitzvah.....	6
Town Hall Meeting	6
Torah Fund.....	7
Wall of Community	7
High Holiday Thank You.....	8
President's Report	9
Youth.....	12
Lifelong Learning	13
Tour to Israel.....	14
Fiddler on the Roof	14
Soles 4 Souls.....	15
Wallace Wellington Retiring	15
Yahrzeit.....	16
Donations.....	17

Temple Beth-El Mekor Chayim
338 Walnut Avenue Cranford, NJ 07016
(908) 276-9231 www.tbemc.org
Rabbi Paul Kerbel
Temple Administrator Laurie Lindner
President Mark Kaplan
First Vice-President Tammy Kaplan
Second Vice-President John Harris
Third Vice-President Phyllis Kandl
Immediate Past President Jackie Baranoff
Treasurer Mindy Kipness
Financial Secretary Alan Schwartz
Corresponding Secretary Becca Reissman

Editors: Debbie Abrams Kaplan and
Devorah Wolf

Thanks: Art Werschulz, Howard Epstein

To Submit Articles or Letters to the Editor:
bulletin@tbemc.org

A Few Words From the Rabbi... Who Needs God?

Rabbi Paul David Kerbel

(This is an excerpt of Rabbi Kerbel's Day 2 Rosh HaShanah speech.)

God spoke directly to Abraham, creating a covenant of faith.

God spoke directly to Isaac, giving protection and blessing.

God spoke directly to Jacob assuring guidance and safe-keeping.


(continued on next page)

TEMPLE BETH-EL MEKOR CHAYIM
LIFE LONG LEARNING PRESENTS

Scholar-in-Residence

FIRSTSESSION	SECONDSESSION
JEWS ON THE MOVE: HOW MIGRATIONS HAVE REMADE AMERICAN JEWISH LIFE The history of the United States is the history of immigration, and so too the history of American Jews is an immigrant saga about rapid adaptation to America. It is a remarkable success story, which continues in our own time.	THE GOOD NEWS ABOUT AMERICAN JUDAISM It's no secret that Jewish religious life is challenged. Less well known are the creative responses of synagogues and other kinds of settings for religious gathering to those challenges. What are they doing differently and whom are they attracting?

Jack Wertheimer is professor of American Jewish History at the Jewish Theological Seminary. He writes about Jewish religious, communal and educational developments since the middle of the 20th century. His most recent book, "The New American Judaism: How Jews Practice Their Religion Today" (2018). He recently completed two reports on the current state of Jewish philanthropy. One is about shifts in giving patterns, and the second is about how grantees perceive working with big funders.



SUNDAY NOV 10TH
9:30 AM to 1:00 PM

featuring
Professor Jack Wertheimer
12:30 PM Luncheon & Book Signing

TBEMC
338 Walnut Avenue
Cranford, NJ 07016
908-276-9231
office@tbemc.org
REGISTER BY 11/6/19

**\$18 PER PERSON
REGISTER AT**
<https://tbemc.shulcloud.com/>

Made with PosterMyWall.com

RITUAL

Even when it's not a holiday - Come to minyan and be counted! Evening minyan is Mondays, Tuesdays and Thursdays at 7:30. Please see the online calendar for the minyan schedules for holidays and regular days.

Our Torah scrolls wear some beautiful bling, that is silver crowns, shields and pointers. For many years, loyal volunteers (most recently, Shelia Levine) polished the silver. It has been five years, and the tarnish has dulled these beautiful artifacts. The Ritual Committee is looking for volunteers to polish the silver. Please respond if you are interested and have some experience working with silver.
Patty Werschulz

FAMILY SHABBAT SERVICE

Rabbi Kerbel will lead a Family Shabbat Service on Friday November 8 from 6:00-6:40 pm followed by ESP- Early Sabbath Prayers (adult service) from 6:45-7:30 p.m. We will not have a 7:30 pm service on November 8th.

BOOK CLUB

November's discussion will be focusing on an amazing woman, Hedy Lamarr. There are quite a few books about Ms. Lamarr, even a new one, *The Only Woman in the Room*, by Marie Benedict. Read whatever you can get your hands on. Let's see if different authors, or even her autobiography, have different ideas, facts and outlooks about her. Please join your fellow readers on Wednesday, November 20 at 7:30, at Abbie's home, 200 Pawnee Road, Cranford. Newcomers welcome!

JVS

JVS Offers a Broad Range of Job Counseling Services

If you or someone you know is unemployed and looking for work, changing careers, re-entering the workforce, or is a recent college graduate and seeking a job for the first time, we can help. JVS Career Counseling & Placement offers high-quality career services — at no or low-cost to you. Services include: one-on-one career counseling and job placement, resume writing, interview training, mentoring, support groups, workshops, vocational testing, and more. For information, contact Dr. Meryl Kanner at JVS:
mkanner@jvsnj.org; 973-674-6330 x 271

In the desert through a burning bush, God spoke directly with Moses, calling him to a sacred mission.

And from the top of Mt. Sinai, God spoke directly to all of Bnai Yisrael, the children of Israel, bathing them in the light of a divine encounter, teaching us laws and customs, asking us to fulfill a sacred task.

And time and time again, God spoke directly with the prophets, calling on them to share God's word, warnings and blessings.

So I don't know about you, but I am a little jealous, a little envious. We know what it was like for our ancient ancestors to speak with God; the question is: why isn't it the same for us?

How come we don't hear from God directly? Who among us sees God in a vision? To whom does God speak today? To whom does God appear? For whom does God have a mission?

I don't have any answers for you. But let's look at it another way.... If we feel bad about not hearing from God, just think how God must feel about not hearing from us. When was the last time you really spoke to God? We hardly know God. We don't know about God, we are embarrassed to talk of God, we seem uncomfortable trying to talk to God. When in our happiness or in our pain, we are somehow moved to find God, we don't always know what to do, what to say.

What happened between the time of the Bible and today? We Jews have been very successful. We have created vibrant communities around the globe, championed social justice and tzedakah, we have saved Soviet Jews, fought time and again to protect and defend Israel, we have fought tirelessly against anti-semitism and oppression, and although we struggle a bit or a lot, for the most part we try to fulfill the mandates of Judaism. We are the wealthiest and most powerful Jewish community ever to have lived. We have contributed to every area of human endeavor, but the one thing Judaism is supposed to do best, it rarely does at all anymore.

Judaism is supposed to help each person find the way to create a personal, meaningful intimate relationship with God, to create lives of sacredness, holiness, communication with and fulfilling a covenant we made with God. We are supposed to create lives filled with purpose and meaning achieving joy and fulfillment.

But with all we have achieved and strived to do in our Jewish lives, most Jews have failed to connect with Judaism in a spiritual religious way. In short, we have built a Judaism often devoid of spirituality causing us to feel the ache of spiritual emptiness.

We have failed to convey the greatness and moral grandeur of Judaism. We rarely, if ever, hear the word of God or see God's vision. We do not hear the "still, small voice." We do not know how to find that voice or even where to search to hear God's voice.

ANTISEMITISM SPEAKER



Evan Bernstein was the last speaker in our program, *Major Issues Facing the Jewish People: Why the Jews?* Evan is the New York/New Jersey Regional Director at the Anti-Defamation League and is responsible for all initiatives across New York State and Northern and Central New Jersey. He is regularly quoted in local and national news sources that have included CNN, the Wall Street Journal and The New York Times about issues related to civil rights and anti-Semitism.

Evan has been appointed to the New York City Public Advocate's Hate Crime Task Force and the Governor of New York's Interfaith Council. He also sits on the New Jersey Office of Homeland Security and Preparedness Interfaith Advisory Council and Congressman Andy Kim's New Jersey Leadership Council on Combatting Anti-Semitism and Hate Speech. He has spoken abroad in locations that have included Mexico City and Paris about the work of the ADL and the current state of core issues in the region. Evan has also testified in front of the New York City Council on topics that have included public school bullying and holocaust education.

Evan has over 20 years of experience that includes serving as the State Director for AIPAC in Arizona and as a Director at the consulting firm CCS Inc. He began his career at the United Way of New York City. Evan earned a bachelor's degree and played lacrosse at Western Connecticut State University. He also received a master's degree from the Extension School Management Program at Harvard University where he sat on the Kennedy School's Hauser Center for Nonprofit Organizations Student Advisory Board.

Evan is a native of southeastern Connecticut where his father was a long time nonprofit executive and a community leader in interfaith/group work.

Follow Evan on Twitter: @bernstein_evan

Major Issues Facing the Jewish People is an exploration into why the Jewish people have been the object of the most enduring and universal hatred in human history: October 31, November 7 and 14.

Minyan at 7:30 pm. Refreshments at 7:45pm. Course 8:00 pm - 9:15 pm.

But I believe we want "to know and experience God." We want answers to the mysteries of existence, to define our place and purpose in life and in being. We want to find meaning and purpose in life, to celebrate joy and triumph, to understand pain, suffering and evil, and ultimately to confront the angel of death and the vast unknown. We want God and I would suggest that our lives would be more whole and more complete if we devote more time to the spiritual and the holy, and to seek and feel God's presence in our lives.

Dear friends: God is with us.

God is with us in the blessings and challenges of our lives.

God is with us during our health and during our illness.

God is with us at our times of strength and at our times of weakness.

God is with us during our times of joy and during our times of sorrow.

God is with us in life and God is with us in death.

As a religious community, we should structure our lives so that we know that: God is in the commandments, God is in our acts of righteousness, God is in the beauty of this world. When I fulfill myself, there is God. When I bring right and justice to others, there is God. When I create joy and happiness, there is God. Our goal should be to live lives as if God is with us at all times. In Bette Midler's beautiful song: "God is watching us from a distance."

Rabbi Menahem Mendel of Kotsk asked his students, "Where Is God?" His answer: "Wherever we let God in." Our High Holy Days have ended but my hope is that we will use the days and months ahead to bring ourselves closer to our families, to each other, closer to our own spiritual yearnings and closer to God.

Bima Accessibility

Thank you to ALL who have sponsored a part of this project.

All donors will be recognized in a prominent display.

There are still many opportunities for sponsors and we encourage chair sponsorships.

Stair Railings (4)	\$7,200
Lift Railings	\$3,600
Stair Railing (Individual)	\$1,800
Congregational Seating Row	\$1,800
Clergy and Bima Chair	\$1,080
Ark Sheer Curtains	\$360
Individual Congregational Seat	\$180
General Support	any

Thanks to all who support our accessible sanctuary project! *Laura Cohen*

Simchat Torah Honorees



Becca Reissman grew up in East Brunswick and was a member of Anshe Emeth in New Brunswick through her Bat Mitzvah. and at EBJC starting in 8th grade. She attended Brandeis University and graduated with a degree in history and literature, before moving to

New York City to begin her career in broadcast public relations. She is currently VP, Client Strategy at Definition 6 in New York. The Reissman family first came to TBEMC in early 2012 to celebrate their daughter Natalie's baby naming, and they were overwhelmed by the warmth of the community. The family officially became members two years later and now they have two children in the religious school. Over the past five years, Becca chaired various events and committees, including Membership, the school's PTO, and a community-wide Maccabee Games. Other roles have included serving on the Education, We Care and Trivia Night committees. She currently serves as secretary on the executive board as well as chair of the Communications committee. She lives in Westfield with her Husband Adam, her son Max and daughter Natalie. We recognize her many contributions by naming her a bride of the Torah.



Mindy Kipness first joined first joined TBEMC in 1984 when she married her husband and blended their family with her two daughters and his two sons. They belonged to TBEMC for about 8 years and both her daughters became bat mitzvahs at TBEMC. They left TBEMC and

attended Congregation Anshe Chesed to attend services with her husband's mother, who was orthodox. In 2004 she and her family moved to Cranford and returned to TBEMC. Mindy started volunteering in 2016 when she retired from Work Life. She started by representing TBEMC on the Israel Support Com-

mittee. There she met interesting people and liked making a difference in something she really cared about - Israel. She works in the Temple kitchen, prepping for Onegs and Kiddishes and helping with Sisterhood raffle. About a year later she was asked to join the Board of Trustees and about 18 months later stepped in when asked to be the Temple's Treasurer. Outside the temple life, she belongs to Financial Women's Association and volunteers in New York as a mentor at the High School of Economics and Finance. Mindy is married to Stanley, and is a mother of 4 and grandmother to 6 children, ranging in ages from 9 to 16. It is an honor to name Mindy Kipness as a Bride of the Torah.

Renee Herz was born in the Bronx and moved to New Jersey 55 years ago when she married her husband. The family became members of TBEMC over 40 years ago and her sons became Bar Mitzvahs



here. Over the years she has been involved in many Temple activities, and as a member of Sisterhood she helps platter food for Onegs, Kiddishes and meetings. Renee became a member of the We Care Committee at its inception and has driven members who are

unable to drive. She also helps prepare meals and serve at the Senior Monthly Gatherings. She was a part of the Casino Night committee and the Goods and Services committee helping with food set up for both events. On the High Holidays she enjoys being a greeter. She also helps to raise money for the Crop Walk to help feed the hungry. Her involvement with the Dinner Dance committee was most enjoyable. For many years she helped write songs and entertained the congregation while honoring past presidents, the rabbi, and the temple itself. She and her husband Donald have twin sons, Steven and Richard, who have blessed them with 5 wonderful grandchildren. It is an honor to name Renee as a bride of the Torah.



WHERE WE ARE NOW

Your Create a Jewish Legacy team was so proud to attend the recent torah dedication event honoring the memory of Anne and Len Farber on Shabbat Shuvah. The Farber family was in attendance, sponsored a wonderful Kiddush catered by our wonderful Sisterhood, and the family chose to match their father's gift. This was a proud moment for all of us. Many thanks to them – they had great parents who cared about TBEMC.

As we move ahead, our efforts to reach out to you, our friends and congregants, continue. Many of you who expressed positive interest in participating in our future giving program at last month's



ticket pickup event will be hearing from us soon! With the holidays past us, more time will free up for everyone, so stay by the phone. We want you to become part of our Legacy Circle sooner rather than later. We have 78

commitments and growing! Keep Judaism and TBEMC alive now! We remind you that the process is painless and that making a legacy gift now does not take current dollars away from your personal needs now. Your commitment represents a FUTURE gift. Our gifts range from \$1,800 to \$100,000 and each one matters, no matter what size! Call David Springer at 908-370-1890 or Laura Cohen at 908-389-1744 to join our Legacy Circle, or fill out the commitment form located in this Bulletin. Be a "good ancestor" and make your family proud of you. We can't wait to hear from you!

David Springer and Laura Cohen



All Create a Jewish Legacy donors in the Jewish Federation of Greater MetroWest were honored at a recent Shorashim event. Here are some photos from the evening.

Classes

TORAH WITH LAURA

We have many openings for upcoming haftarah!

Have you thought about re-learning your bar or bat mitzvah haftarah? Do you want to try out a new ritual skill? Do you have a special family occasion coming up that would be appropriate for the honor of chanting a haftarah? Are you willing to put some time into practice? Lessons and assignments for Torah and haftarah readings! This is your one-stop shop! Please reply if you have a specific request or just want to learn how to do it.

Laura Cohen, cell (848)702-9106

HEBREW

Hi everyone! I would like to start a new Hebrew reading class. The class would be for beginners and those who had training as a child, but their skills have lapsed. Contact me if you are interested! Liela Bernstein
(908) 233-0058, lielabern@comcast.net

BAR MITZVAH

Brandon Klinger was called to the Torah as a Bar Mitzvah on October 26th. Brandon is an eighth grader attending Orange Avenue School. He lives in Cranford with his mother, grandfather, four siblings, dog Lexi, and cat Alejandro. Brandon likes sports and enjoys playing basketball with



the Cranford Recreation Department. He enjoys spending his summers at the beach swimming in the ocean, digging for sand crabs and fishing. He is a wiz with his iPad and dominates playing games such as Fortnite, Minecraft and Roblox. Brandon

loves all animals, especially dogs, frogs, and fish and likes studying about dinosaurs and gemstones.

SAVE THE DATE TOWN HALL MEETING

Sunday November 24th

Congregational Town Hall meeting in our sanctuary. Time TBA. Bring your questions, your ideas, your concerns and your hopes, so we can all listen to each other, and better move forward together.

Religious School News

TBEMC Religious School Provides Education for All Age Groups

The TBEMC Religious School fosters love for G-d, prayer, Torah, and community. We offer a range of Jewish education for the entire family. Religious School is Sundays from 9-12 for all grades, and Tuesdays from 4-6 for 3rd-7th grades. When students reach Bar/Bat Mitzvah, they will have learned skills in Hebrew reading, prayer and understanding of Jewish holidays.

Students begin in kindergarten through 2nd grade with hands-on learning that includes holidays and Hebrew letters. Temple membership is not required until 3rd grade. With our new Sustaining Pledge Model, more young families are joining an earlier time, because we have a more flexible donation model without a set dues amount.

The Gan Katan class held bi-weekly for ages 3-4, is filled with joy through art, music, storytelling, dancing and friendship. Temple membership is not required for this program, which begins the foundation of Jewish life for each child.

Tot Shabbat for children 0-6 years is held monthly and helps light a spark that connects children to Judaism at a young age. We develop the habit and joy of praying with the community. Temple members and non-members are warmly welcomed.

Parents are encouraged to enhance their Jewish education through Shabbat Junior Congregation and Sunday morning prayer service.

We welcome you to register throughout the year for Gan Katan through 7th grade classes. Any time you decide to register is the right time! We recognize that there are traditional and non-traditional family units with unique spiritual needs. It is our goal to open our doors to all who seek a congregation such as TBEMC.

Contact the office or Doni Remba for more information.



Torah Fund

Every woman has the opportunity to participate in preserving, promoting and perpetuating Conservative/Masorti Judaism through active giving to the [Torah Fund Campaign](#) of Women's League in support of the Jewish Theological Seminary (New York, NY), Ziegler School of Rabbinic Studies (Los Angeles, CA), Schechter Institute of Jewish Studies (Jerusalem), Seminario Rabinico Latinoamericano (Buenos Aires), and Zacharias Frankel College (Potsdam).

The Torah Fund campaign began in 1942 as a scholarship fund. In 1963, it merged with the Mathilde Schechter Residence Hall campaign that provided housing for undergraduate students. In time, the campaign identified needs and raised funds for specific projects, including:

- Women's League Educational Pavilion (Kripke Tower)
- Mathilde Schechter Residence Hall Renovations
- Women's League Seminary Synagogue
- Goldsmith Hall
- JTS Quadrangle
- JTS Library Bookshelves
- Schechter Institute of Jewish Studies Garden
- Residence Hall at the American Jewish University



For the past several years, funds raised by Torah Fund have gone toward scholarships to all the schools. There are continuing opportunities for sisterhoods and individuals to provide support to all four institutions through Torah Fund. Thousands of dedicated volunteers have contributed to the spiritual, esthetic and material well being of these educational communities by supporting Torah Fund projects.

The 5780 (2019-2020) Torah Fund pin depicts a heart surrounded by three circles, one larger than the next. This symbolizes the heart of kindness, which Jews enact in ever-widening realms of generosity: from family, to community, to the larger world; from North America, to Israel, to the world; or from sisterhood, to region, to the larger world of Women's League for Conservative Judaism. And as it is said in Psalm 89, may we build a world of kindness.

Wall of Community

This is a reminder about our ongoing commemorative tile project. We will continue ordering tiles, and an order is placed when we have five or more or more orders. You can have three lines of text, 20 characters per line. Please see the flyer for details about ordering. If you have any questions, feel free to contact Sandy Springer at 908-507-3291 or via email sprfamly@verizon.net. You can order online at www.tbemc.org with a credit card or send in a check to TBEMC, 338 Walnut Ave, Cranford, NJ 07016. Honor a special person, occasion, commemorate your years at TBEMC or celebrate our 101st anniversary.



**Commemorate the past.
Celebrate the present.
Inspire the future.**



Men's Club and Sisterhood prepared for the Break Fast at TBEMC

MEN'S CLUB

October 30, Torah on Tap

The Kilkenny House in Cranford

November 10, Veteran's Day Brunch

CBI in Scotch Plains

November 17, Joint brunch with Sisterhood

November 24, Thanksgiving Kids' Party

Kindle giveaway! Bingo with prizes.

Hot dogs, knishes.

December 15

Regional Man of the Year Dinner

Temple B'nai Tikvah in North Brunswick, to honor our Man of the Year (to be announced after our next meeting).

SISTERHOOD

Rummage

Rummage is coming! November 3 – come volunteer to work and shop. See flyer for details.

Membership Event

Save the date! Tuesday, December 17 for Sisterhood's Paid-Up Membership event.

Sadye Ross Book of Memories

Whenever you need a card for a birthday, anniversary, graduation, etc., or for condolences, call or e-mail me. I can write your message and mail a Sadye Ross Book of Memories card for you. Just \$3.50 per card sends your message out and donates money for Sisterhood. You can also buy 10 cards for just \$30 to have cards on hand to send out on your own.

LOOKING FORWARD

TO HEARING FROM YOU

Liel Bernstein

lielaberns@comcast.net, (908) 233 – 0058

Oneg and Kiddish

Sisterhood joyfully prepares and platters the Oneg and Kiddush each week that it is not sponsored. Please sign up to help. Ask a friend to join you who hasn't experienced the Friday morning fun yet, beginning at 10 ending by noon or earlier. The more people who sign up, the more fun and easier it is on everyone! Don't just think that "someone else will do it." We need you one and all. (Men and women wanted. No experience necessary.)

Contact Carol Blank to volunteer at (908) 272-7254 or mail2duck@aol.com

High Holidays

Thank you to everyone who helped with the High Holidays.

This is not a complete list, as it's impossible to mention everyone. Please know that all help, big and small, was appreciated.

DAVENERS AND GABA'IM

Girsh Sorkin, Phil Stein, Laura Cohen, Art Wershulz, Patty Wershulz, Sarah Kramer, Alana Taub, David Springer, Rabbi Kerbel, Hazzan Belilos, Spencer Brooks

TORAH READERS

Laura Cohen, Art Wershulz, Girsh Sorkin, Aaron Werschulz, Sarah Kramer, Harold Oslick, Alana Taub, Larry Metz, Noah Metz, Joshua Metz, Melanie Kandl, Jeremy Brooks, Alana Taub

HAFTARAH READERS

Linda Ershow-Levenberg, Fred Kessler, Jacob Piatkowski, Zack Kaplan, Laura Cohen, Alana Taub

SHOFAR BLOWERS

Garrett White, Aaron Werschulz, Jeremy Brooks,

HIGH HOLIDAY COMMITTEE

Elliot Ballen, Adam Reissman, Adam Fitzer, Sarah Kramer

HOUSE/RITUAL/OFFICE

Shari Kopla, Patty Werschulz, Laura Cohen, Phil Stein, Roz Rosenfeld (for flowers), The Choir led by Spencer Brooks, Joe Bloomfield and anyone else who helped in the office

Those who worked at ticket pick-up.

All who helped set up and take down seating at the holidays.

Thank you to Sisterhood for greeters and the community Break-Fast.

Thank you to Men's Club for ushers and for the Break-Fast meal.



Ellie Barkin organized lunch, crafts, sandwich making and food donation sorting in the sukkah.

President's Report

Mark Kaplan

In 2017, TBEMC celebrated its 100th birthday – 100 years of serving the educational, spiritual, and social needs of conservative Jews in Cranford, Westfield, Scotch Plains, Clark, Linden, Elizabeth and beyond.

Many of us have expressed the desire for TBEMC to be around for the next 100 years, and I strongly share that sentiment. So, how do we get there? I am not here to give you a road map until 2117 – because I don't have one. But I can tell you the three things that we'll need: continuity, planning, and change.

Continuity: let's keep up the good work we do and play to our strengths. We should continue to be warm and welcoming. Think about the first time you came to TBEMC, how you were greeted, and the genuine interest people showed in you. That is who we continue to be. Newcomers who come to a Shabbat service and plan to be anonymous, be forewarned, we can't do that, we have to welcome you, 20 times at least!

We should continue to be inclusive to people of all backgrounds – be it interfaith, ethnicity, special needs, accessibility, same gender or other non-traditional member units. We should continue to be there for each other – whether it's for a Simcha, for communal prayers at Minyan or Shabbat, for erecting and disassembling our community's Sukkah, for our Senior Monthly Gatherings, for Shivas, for congregants in need.

We should continue to commit to the next generation of Jews and support an exceptional religious school. With that said, we welcome our new principal Doni Remba. We thank Leah Davidson, religious school chairperson and our Education Committee. Everyone is invited to join our religious school community on Dec 15th for our Zimriyah songfest and Hanukkah party.

We should continue to be a center for Jewish identity and learning. Rabbi Kerbel recently organized an amazing program during Friday evening services in September. Through the Rabbi's efforts and the

Friends of the Israel Defense Forces, we hosted two Israeli soldiers who shared their incredible stories with us. It was an intensely moving evening for all those in attendance. We hope to have Israeli Defense Forces' soldiers back in this sanctuary in the near future.

Abbie Halperin and Marty Schwartz co-chair our Lifelong Learning Committee. In conjunction with Rabbi Kerbel, they have developed a new education series entitled, "Why the Jews: Major Issues Facing the Jewish People." The first class is on October 31st. Mark your calendars and join us!

Our very exciting Scholar-in-Residence Program is being held on November 10th. We are thrilled to have Jewish Theological Seminary Professor Jack Wertheimer presenting on the changes and challenges in contemporary Jewish Life. Professor Wertheimer has published books and research on this important topic and will be sharing his insights with us.

We should continue to put the Fun into Fundraising – Trivia Night is coming back on February 29th – thank you Jessica Suckerman and Marc Bromberg for co-chairing. Get your tickets early so you don't miss out. And try hard to get our own Bruce Solomon on your team, he is most definitely the king of trivial information!

Last but not least, we should continue to have a strong corps of volunteers. Three years ago, Allen Barkin and I co-chaired that year's major fundraiser– 99 years of Volunteers. We called it 99 Years of Volunteers not just because it was a catchy title – although it was – but because we wanted to convey our deeply held conviction that volunteers and volunteerism are at the heart of TBEMC.

Today, I again want to honor that spirit, and recognize our volunteers. Your talented and dedicated Executive Committee includes Tammy Merman, 1st Vice President; John Harris, 2nd Vice President; Phyllis Kandl, 3rd Vice President; Mindy Kipness, Treasurer; Alan Schwartz, Financial Secretary; Becca Reissman, Secretary; Jackie Baranoff,

(continued on next page)

(continued from previous page)

Immediate Past President. Thank you for your time and dedication.

I want to honor those who volunteered in any capacity for the High Holidays: davening, reading Torah, reading Haftarah, singing in the choir, Shofar blowing, being an usher or greeter, helping at ticket pickup, helping with youth programs, physically setting up our sanctuary, and any other capacity.

Thank you to those who have served on our Board of Trustees within the last year, those who served on any of our committees, or have been active in our Men's Club or Sisterhood, or in the Religious School. Finally, thank you to those are able if you have volunteered in any capacity over the last year. TBEMC would simply not exist without your work.

A little fun fact, the Titanic was built by professionals, but Noah's Ark was built by volunteers.

Planning: Failing to plan is planning to fail. And hope is not a strategy. Fortunately, we have many generous, thoughtful members who have planned; they have planned for the future financial needs of our congregation. Lenny Farber was one such member. In October on Shabbat Shuvah, we honored his and his wife Anne's legacy to our community – their service, their wonderful good humor, and their belief that our community should endure beyond their own lifespan. Sadly, Lenny did not live to see this new year, but in true Lenny style as a planner, he left a generous bequest to TBEMC, and his family, inspired by the example of their father, provided a matching gift.

So did Bernice Bedrick and Millie Lewis, two other exceptional members of our Legacy Circle whom we lost this past year. Their stories are among 78 stories, each from one of our Legacy Circle members. To my fellow Legacy Circle members, we thank you all from the bottom of our hearts. You represent our future. If you would like to join the Legacy Circle, please reach out to me, or our Legacy Co-Chairs David Springer and Laura Cohen with any questions; there is always room for this circle of love and commitment to grow.

Planning is not just for individuals, but also for your leadership. In September, Susan Harris led our

Board of Trustees and Rabbi Kerbel for over four hours on a Sunday to develop a Strategic Plan for the next 2 years. After much insightful and frank discussion, we reached a consensus for our top five priorities that will encompass our focused attention for the immediate future: Fundraising, Inclusion, Rebranding, Lay Leadership Development and Community Outreach. You will be hearing more details as we embark on this plan. During the next two years, your board will not just focus on day to day operational issues, but will also have strategic discussions about building a stronger TBEMC.

Finally, it's important that as leaders, we hear feedback from our community. On November 24th – a Sunday morning – please join Rabbi Kerbel, me and your officers as we host a Congregational Town Hall meeting in our sanctuary. Bring your questions, your ideas, your concerns, and your hopes, so we can all listen to each other, and better move forward together. And afterwards you can go seamlessly to the Men's Club Annual Thanksgiving Day Kid's Party, a TBEMC tradition.

Change: As Rabbi Kerbel has said, the Jewish people did not survive the last 2,000 years without some radical changes. At TBEMC we have embraced change: from moving to our current home on Walnut Avenue, to becoming an egalitarian community, to recently renovating our sanctuary and our upstairs bathroom, in order to become more physically accessible. And on December 8th we will be honoring and installing Rabbi Kerbel as our new teacher and spiritual leader, whom we are very fortunate to have. Please be sure to join us for what I know will be a very special and moving afternoon.

Last year we made another change, a really big change, one that sets us apart from many other congregations. We introduced our Sustaining Pledge Model, or SPM. We changed our method of annual giving from fixed dues to a voluntary pledge. We no longer tell members, "these are your dues, and if you can't pay then you must speak with the President or Financial Officers." What we do now is communicate the average amount each member family needs to give – this year it's \$2,900

(continued on next page)

(continued from previous page)

- for us to meet our annual budget and to operate sustainably, but the specific amount you pledge is up to you. Why does this matter? First, it attracts new members. “I can’t afford synagogue dues” is no longer an impediment to membership. While in truth it never was, the process for dues relief for new members was opaque and off-putting. The SPM reaffirms our commitment to be an inclusive, barrier-free welcoming community.

Second, if you are faced with a hardship: a financial setback, a health crisis, you are already dealing with difficulties. We do not want to compound these issues for you by requiring a plea for a dues reduction. TBEMC stands by you and understands that in these moments you need compassion. This is something that I personally understand. Finally, the SPM has seen increased annual giving from many of our members. Last year, our first year in the SPM, there were more increases than decreases, a true sign of our value to membership. Under the SPM, you are not giving the amount handed to you from someone else, you are giving from your heart, giving because you love your community, giving because you also believe in a barrier-free community, and giving because you recognize without you doing your part, we cannot stay strong. And you are giving more than you did last year because it makes you feel good. So please, continue to give from your heart and with love, you are all integral to ensuring TBEMC continues from strength to strength for many, many years.

Another change to the way we fundraise is our Sponsorship Program, the brainchild of Linda Ershow-Levenberg. As a member of our SPM committee, Linda recognizes that everyone’s Sustaining Pledges are critical for synagogue operations. However, Linda also recognized that members like to sponsor specific things, to have their names associated with something they are passionate about. We already do this in a one-off fashion – for example, for years Roz Rosenfeld has sponsored our flowers on the Bima for the High Holidays, and last year we launched a “sponsor a day of learning” for our religious school, which was very popular and is back again this year.

What Linda has done is to broaden, expand and publicize numerous available sponsorship opportunities. She and her husband David took the lead by sponsoring the upcoming Simchat Torah luncheon, and Linda’s law firm is a major sponsor of the Senior Monthly Gathering. Others have been inspired to follow their lead this year: Carol Steuer and Herb Marton sponsored lulavs and etrogs for the religious school AND the annual Tu B’shevat Seder, Abbie and Howard Halperin and Heidi and Seth Farber sponsored Erev Simchat Torah snacks, Mindi and Larry Metz sponsored the fast of the firstborn over Passover, Liela Bernstein and Larry Posner sponsored upcoming kiddushes, Nancy Lubarsky and Don Shapiro sponsored babysitting during the High Holidays, Joy and Michael Weinstein sponsored cheesecake on Shavuot, and Debbie and I sponsored our Bagels and Babies program. There are plenty of other sponsorship opportunities available at all different levels of sponsorship – something for everyone and every interest. Linda is looking forward to speaking with you to help decide what works best for you.

One less welcome change is the need for increased security. It is the unfortunate reality in the world today that synagogue security has become even more important. Fortunately, thanks to the efforts of Marty Metzger, Harold Oslick, and our administrator Laurie Lindner, we were awarded a sizable grant from Homeland Security to improve our security over the next three years. While these funds will not provide for everything on our security wish list, they will most certainly move our security enhancements forward in a major, major way. Our sincere thanks for obtaining this grant.

I wanted to highlight a second grant that we have received to promote change, thanks to Susan Harris. As I said earlier, we pride ourselves on being an inclusive community. Based on the work we’ve done to date, and our commitment to become even more inclusive, we received a grant for our program from the Jewish Federation of Greater MetroWest NJ’s Greater MetroWest ABLE, the Gary Aidekman Family Foundation and the Sylvia and Seymour Rubenstein Special Needs Endowment

(continued on next page)



TBEMC Youth

The 2019–2020 school year is here! This year USY and Kadima have some great events planned. As always, we are looking for new and old members to register for USY. To register as a member of USY or Kadima, fill out the form here:

<http://bit.ly/2MZqZZV>

You can also email:
TBEMCYouthgroups@gmail.com
 for more information!

Please take a look at the current calendar of events and kindly consider joining USY or Kadima!

Ellie Barkin-Baron

TBEMCYouthgroups@gmail.com

TBEMC Youth Calendar of Events

KADIMA

Yestercades November 17, 4 - 5:30 pm

Do you like to play video games? Then join Kadima at Yestercades on November 17th. Try some pinball, play your favorite video game, or try out the retro games your parents grew up on. There is more fun to be had than you can image! And the only thing that could make it better is doing all of these things with your Jewish friends!

Menorah Making December 15, 12 - 2 pm
 What could be better than a homemade menorah? Join your fellow Jewish friends for pizza and menorah making! We will use air-dry clay to craft creative menorahs that can be anything that you wish. I am looking forward to seeing what everyone creates! RSVP by December 12 to:

TBEMCYouthgroups@gmail.com

USY

Cranford USY Game Night

November 3, 7 pm

Kosher Chinese food and Mario Kart... what else could a young adult want? Join your friends as we battle to be the winner of Rainbow Road or the world. RSVP by November 1 to:

TBEMCYouthgroups@gmail.com

Register for USY Fall Kinnus today! Come see your friends, make new friends, and have a great time November 15th-17th at the Marlboro Jewish Center! Registration is open until November 8th, and the cost is only \$140!

Register at regpacks.com/hagalil1920

(continued from previous page)

Fund. On the weekend of February 7-9th we will be hosting a Community Inclusion Weekend. Shelly Christensen, a renowned speaker, author, and trainer, will present on inclusive Jewish communities, train us and inspire us. We will learn to create more inclusive physical spaces and to be more inclusive in our language and programs with the ambition of eliminating barriers to participating in our communal life at TBEMC. The weekend is not just for us, the entire Jewish community will be welcomed, and this will be a true feather in our cap. Thank you to Laura Cohen and Shira Goldberg for chairing this weekend and to John Harris and the membership committee who will provide the rest of the “volunteer power” to make this weekend a success.

I want to end with two very special thank yous. First to Phil Stein, who makes sure that everything is in order and in its place not only for these high holy days but for every service and oholiday throughout the year. Thank you, Phil, for this ongoing labor of love. And second, to Patty and Art Werschulz. If all goes according to their plan, this time next year they will have made Aliyah. On behalf of all of us at TBEMC, we wish you much joy, we thank you profoundly, and we will miss you deeply.

Continuity, planning, change, our keys for 5780, and for years to come. In closing, I wish everyone a meaningful fast, a joyous holiday season, and I hope to see you all at TBEMCs 200th birthday bash.

L'Shalom
 Mark Kaplan



Pizza in the Hut was a huge success. We collected and sorted food for Project Isaiah, made sandwiches to donate, made crafts and had a great time.

Fundraising

Gift Cards Sisterhood sells gift cards all year long. Use them instead of your credit card when grocery shopping as well. When you buy your gift card through Sisterhood, TBEMC gets a percentage of every card, and it costs nothing extra. Did you know that 5% of every ShopRite card you buy goes to TBEMC? While you may forgo your credit card rewards in using them, you'll be making a valuable donation to the shul.

How to Get Gift Cards Linda Flaxman is the queen of gift cards. Email Linda at linda.flaxman@rutgers.edu to order them. She's often at the Sunday morning minyan with her box of cards, as well as other synagogue events.

The temple office has several types of grocery store gift cards. Come in during office hours (including the start of Tuesday Hebrew School).

Gift cards bring in thousands of needed dollars to TBEMC every year. Though it may take a little adjustment in how you do your grocery shopping, purchasing or ordering cards from Linda and not picking them up at the store, does a mitzvah. Cards include: **Shoprite, Acme, Kings, Barnes & Noble, Dunkin' Donuts, Starbucks, Home Depot, Lord & Taylor, & Claire's.**

Cars for Cash Are you looking for a tax break for next year? One great way to support TBEMC is by donating your used car. You get the full tax deduction and TBEMC gets the majority of the donation. To donate, go to the "Support the Temple" part of TBEMC's website, click "Support by Shopping" and then click "CARS." For questions or more info on this easy donation process, please contact Mark Kaplan at 908-232-5498 or markikaplan@hotmail.com

Support TBEMC

Use the Support by Shopping Link

Amazon has historically generated the most revenue for the Temple in terms of support by shopping (with the exception of car donations), but we can do much better. Use this URL to support TBEMC by shopping with Amazon, Barnes and Nobel, Jewish National Fund, car donations, JDeal, Escrip, Israel Bonds: Use the link on the TBEMC site, or bookmark: <http://tbemc.org/shopping/>

Please send me an email if you have any difficulties or any questions.

—David Thaler, mediatorthaler@hotmail.com



Pizza in the Hut

LIFELONG LEARNING

Major Issues Facing the Jewish People

Why the Jews? An exploration into why the Jewish people have been the object of the most enduring and universal hatred in human history.

Thursday evenings:

November 7, 14 and 21

Minyan at 7:30 pm

Refreshments at 7:45pm

Course 8:00 pm - 9:15 pm

Scholar in Residence
PROFESSOR

JACK WERTHEIMER
"Jews on the Move"

How Migrations Have Remade
American Judaism.

Sunday, November 10, 9:30 am

In Honor of Jewish Book Month SPECIAL SHABBAT SERVICE

Sponsored by Lifelong Learning

Friday, November 15

7:30 – 9:30 pm

SAVE THE DATE Film Series

The Lifelong Learning committee will be starting another film series this month. They run on Sundays at 4:00 pm in the Youth Lounge. Put the dates on your calendar! The theme is comedy films, with a Jewish theme and/or Jewish content.

December 29, 2019 April 26, 2020

January 26, 2020 May 17, 2020

February 23, 2020 June 14, 2020



Pizza in the Hut

LIBRARY

So many new books! Please check them out. Books are made possible by your DONATIONS. Thank you and, I hope all TBEMC readers will please continue their generosity.

- Donate to just to donate
- Donate in someone's name, honor or special occasion
- Contribute to the new Howard & Abbie Halperin Library & Education Fund

Call the office or Abbie for more information, ANY suggestions or questions. Abbie can be reached at (908) 337-5256 or abhalperin@gmail.com. Remember to return the books as soon as you can so everyone can borrow them.

Thank you.

Abbie Halperin

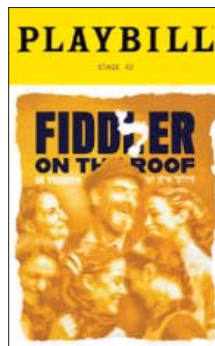
Tour to Israel

Learn about Rabbi Kerbel's Tour to Israel
Rabbi Kerbel will host an informational meeting
on Sunday November 10 at 1:00 pm
for TBEMC's 2020 Tour of Israel.

Larry Ritter, President of ITC Travel will give an overview of the trip and answer questions. Please RSVP to the Temple office by November 6th.

FIDDLER ON THE ROOF

Let's go "zuzamin" (together) to see "Fiddler on the Roof"
in Yiddish with English supertitles.



Date

Sunday, December 15, 2019

Time

1:00 pm Pick-up at TBEMC

9:15 pm Estimated Return

Dinner

Following the show, we'll have dinner at Ben's Kosher Delicatessen.

Cost

Cost: \$150 per person for TBEMC members/ \$160 non-members

Includes

Tickets to the show, round-trip transportation, dinner at Ben's Kosher Delicatessen, transportation from theater to the restaurant and back to TBEMC.

Sponsor a Kiddush

Birthday, anniversary, baby, new job, retirement, good news, good health, good luck, goodbye...the reasons are infinite. The best reason? To support Sisterhood.

Sisterhood provides the Oneg and Kiddush each week it is not sponsored. We financially support the Religious School, library, USY and Kadima youth groups. We joyfully present B'nai Mitzvah gifts and donate to synagogue projects.

The Sisterhood Saturday Kiddush is prepared for the congregants attending services, approximately 30-40 attendees each week. The cost is 10 times Chai, \$180. Please pick a date and let us know what to write on your special cake. We appreciate your support!

Soles 4 Souls

TBEMC will be hosting a shoe drive for Soles 4 Souls, an organization which provides shoes to impoverished communities around the world. Many people in these countries are unable to get to work or school due to lack of a pair of shoes. The shoes from the drive are provided to entrepreneurs in order to start or maintain cottage industries, whereby shoes are sold at low cost to community members. Soles 4 Souls is a 501(c)(3) charity, rated 4 stars by Charity Navigator. They assist families in lifting themselves out of poverty. The recipient nations are currently Haiti, and others in Africa and Central and South America. The drive will take place between November 4 and December 20. Place your new or gently used shoes in the appointed bin in the temple lobby.

Any questions or ideas can be sent to Susan Eisenberg

ShoshanaE123@aol.com



Community

Our custodian, Wallace Wellington, is Retiring!

Thirty-four years ago, I hired a new custodian for TBEMC. He's had a long tenure with us. Wallace Wellington has served us well for all these years, never with argument. It has been my pleasure to work with him all these years. He recently retired from the Rahway Board of Ed and plans on going to Jamaica where he's been building his retirement home. I am planning a dinner to honor him (details to follow). Unfortunately, he had been shipping items to this home and it was recently robbed. I am asking the good folks of TBEMC to make a donation for Wallace to help him replace stolen items. Checks should be made out to TBEMC and note Wallace in the memo line. A nice thing to do for this loyal man who served us well all these years. You can also donate online through ShulCloud - thank you Mindy Kipness for setting this up. Donations are requested by or before November 8th, although it will never be too late to contribute. *Marty Metzger*

WE CARE

After a very successful first year, the WE CARE committee looks forward to continuing to provide support through doing deeds of loving kindness for our TBEMC community. Many thanks to all those that have volunteered this past year in the many areas that WE CARE provides services to our community.

Volunteer opportunities are available in the following areas:

The We Care committee is looking for a volunteer to send out preprinted monthly birthday cards to our congregants. Also needed: meal prepping and delivery for those in need, Homework Club Tuesdays 3-4 pm at TBEMC, Shiva meals, providing transportation, helping with senior monthly gatherings, medical apparatus lending library, mailings and correspondence, monthly birthday cards and get well cards, making telephone calls, home visitations, hospitals and nursing home visitation and food bank collections.

We welcome anyone wishing to volunteer in providing deeds of loving kindness; any amount of time is appreciated no matter your age or availability. Please contact Dave Salomon at (908) 868-9028 or email dsalomon8648@gmail.com

COMMUNITY

The Veron, Rabinowitsch and Coddington families would like to thank the TBEMC community for the support we received over this past year, and the condolences on the passing of Carrie Sue Coddington.

Thank you to the kiddush donors.

Joe Bloomfield

COMMUNICATIONS

In order to take full advantage of our communication resources please coordinate all events with the temple office. By doing so you'll have the ability to advertise your event in the following places:

weekly eblast	website
bulletin	calendar
Facebook	Shabbat handout
local newspapers	and more

You'll also be able to request an electronic payment page on the website for your event. We look forward to helping all event coordinators "get the word out" and having all our events successful.

communications-team@tbemc.org

Yahrzeit Announcements

NOVEMBER 2-8, CHESHVAN 4-10

Isadore Fox, father of Milton Fox
Ella Levine, mother-in-law of Esther Levine
Samuel Liebensson, father of Joan Finkelstein
Evryl Roy, mother of Harold Roy
Sally Sperber, mother of Martin Sperber
Betty Forlander, mother of William Forlander
Morris Shor, father of Judith Beinstein
Randy Jackson, brother of Marla Cordero
Pauline Ort, mother of Blossom Hatoff
Arthur Rosen, father of Joanne Friedman
Simon Wang, grandfather of Robert Meth

NOVEMBER 9-15, CHESHVAN 11-17

Alice Benbasset, mother of Renee Herz
Dorothy Goldstein, of Robert Galen
Louis Fishman, brother-in-law of Eleanor Fishman
Irene Rosenberg, mother of Jean Kroner
Samuel Gantz, father of Irving Gantz
David Rappaport, father of Irwin Rappaport
Augusta Sokolov, mother-in-law of Marvin Greenberg
Toby Jacobs, mother of Harriet Scheiner
Samuel Barr, Father of Sharlene Barr
Bertha Isenberg, grandmother of Annette Sarrazine

NOVEMBER 18-22, CHESHVAN 17-24

Jack Franzman, father of Linda Leifer
Norman Gantz, brother of Irving Gantz
Harry Koved, father of Solomon Koved
Clara Krebs, mother of Jeffrey Krebs
Julia Szabo, sister of John Harris

Ellen Meth, mother of Robert Meth
Regina Kaback, mother-in-law of Marilyn Kaback
Reuben Rifkin, brother of Elsie Levine
Emil Bleemer, grandfather of Russ Bleemer
Maurice Roffe, Father of Julie Barkin
Minnie Schwartz, mother of David Schwartz
Harold Baranoff, Father of Jerald Baranoff
Joseph Greenberg, father of Marvin Greenberg
Florence Jacobson, mother of Roberta Einhorn
Benjamin Kleinert, father of Carol Blank
Robert Littman, brother of Marie Littman
Frieda Suretsky, mother of Harold Suretsky
Irene Gromfin, sister of Thelma Rappaport
Leonard Sattler, brother of Lorraine Loshin
Nathan Tanenbaum, father of Eleanor Fishman
Edward Warren, father of Sadie Schoss

NOVEMBER 23-29, CHESHVAN 25-KISLEV 1

Joseph Eder, father of Dorene Barnett
Ethel Becker, mother of Annette Diamond
Morton Fairberg, father of Ruth Sperber
Samuel Fishman, father-in-law of Eleanor Fishman
Max Grund, father of Roberta Phillips
Faye Rubin, mother-in-law of Laura Rubin
Anna Zinker, grandmother of Sima Murphy
Emanuel Bedrick, father of Jane Abel
Dora Bunis, grandmother of Ruth Kerr
Tillie Saperstein, mother-in-law of Joseph Bloomfield
Sharon Krebs, mother of Jeffrey Krebs
Lillian Goldblatt, sister of Rae Kane
Lillian Rosenberg, mother of Richard & Judith Rosenberg
Joseph Schendelman, husband of Mildred Schendelman



DONATIONS



General Fund

Clarisse Kant, in loving memory of Molly Sperling's granddaughter, Robyn

Halperin Library & Education Fund

Howard & Abbie Halperin, in loving memory of Ann Halperin
Annette Sarrazine, in loving memory of uncle Marty Friedman.
He loved the library almost as much as my mom.

Security Fund

Aaron & Laura Cohen, in loving memory of Tammy Kaplan's father,
Gene Kaplan

Sisterhood Fund

Richard & Greta Polonitza, in loving memory of Molly Sperling's
granddaughter Robyn

We Care Fund

Barbara Potashkin, in loving memory of Robyn Harvan,
granddaughter of Molly & Henry Sperling

Yahrzeit Fund

Judith Beinstein, in loving memory of Sonia Beinstein
Harold & Helaine Cohen, in loving memory of Betty Cohen
Harry & Roberta Einhorn, in loving memory of Leonard Einhorn
Bertram Fine, in loving memory of Anna Weiss
John & Nita Heyman, in loving memory of Eli Barkin
Miriam Jarney, In loving memory of Sigmund Grunwald
Marilyn Kaback, in loving memory of Robert Kaback
Frederic & Roberta Kessler, in loving memory of Sarah Schoen
Sam Kimmelman, in loving memory of Roslyn Kimmelman
Beverly Korman, in loving memory of Mark S. Korman
Neil Mayer, in loving memory of Phyllis Mayer
Florence Nadelman, in loving memory of Ida Feshbach
Judith & Richard Rosenberg, in loving memory of
Abraham Rosenthal
Judith & Richard Rosenberg, in loving memory of Harry Rosenberg
Harriet Scheiner, in loving memory of Abraham Scheiner
Gail Stockwell, in loving memory of Marjorie Levine
Leonard & Lois Waldman, in loving memory of Michael Goldberg
Leonard & Lois Waldman, in loving memory of Alexander Waldman
Leonard & Lois Waldman, in loving memory of Lawrence Safran
Leonard & Lois Waldman, in loving memory of Perry Rabbino

The Temple office can help you decide what
the best giving opportunity is for you

908-276-9231 x10 or office@tbemc.org

Please consider donations to these other
charitable funds at TBEMC

Yahrtzeit Fund

Rabbi Discretionary Fund

Stuart Kaback Memorial Fund

Accessibility Project Fund

Halperin Library & Education Fund (HLEF)

Temple Fund

We Care Fund

Dora Haleva Fund

Holocaust Garden fund

Metzger Memorial Fund

Youth Education Trust Fund

Cantor Discretionary Fund

Simcha Fund

Doris Bloomfield Fund

Men's Club Fund

Religious School Fund

Shiva Meal Fund

JNF Tree Fund

Sisterhood Fund

We Gratefully Acknowledge

These Donations Made to

Temple Beth-El Mekor Chayim

Mazel Tov מזל טוב

The Sisterhood Saturday Kiddush is prepared for the congregants attending services, approximately 30-40 attendees each week. Share your simcha with your temple family. A simple Kiddush with special cake starting at \$180.00

Call Gail Salomon (908) 272-5444 or Carol Blank (908) 272-7254 to discuss options.



Sisterhood provides the Oneg and Kiddush each week it is not sponsored. We financially support the religious school, library, USY and Kadima youth groups, joyfully present B'nai Mitzvah gifts, and donate to synagogue projects.

Support Sisterhood Support Your Synagogue

PLEASE JOIN TBEMC'S NOVEMBER SENIOR MONTHLY GATHERING

FOR A SPECIAL MUSICAL PRESENTATION BY
NEW JERSEY'S GRAMMY-NOMINATED
COMPOSER AND SINGER



BRUCE STEPHEN FOSTER
TUESDAY, NOVEMBER 12, 2019 AT 11:00AM

LUNCH WILL BE SERVED IMMEDIATELY FOLLOWING THE PROGRAM

\$5 donation suggested for TBEMC members and caregivers

\$10 suggested donation for non-TBEMC members

PLEASE RSVP TEMPLE OFFICE, 908-276-9231

*This program is sponsored by the Elder Law Firm of
Fink Rosner Ershow-Levenberg, LLC



Join Temple Beth-El Mevor Chayim's

Adult Israel Experience

LED BY

Rabbi Paul Kerbel

June 7 - 19, 2020

Eilat - Petra Extension June 18 - 21, 2020

View and download itinerary and application at www.israeltour.com/rkerbel

Tour Pricing

DISCOUNTED PRICE FOR CHECK PAYMENT

Land Only Package - \$3995

per person in a double room

Land and Air Package - \$5315

per person in a double room

Single Room Supplement - \$1360

FULL PRICE FOR CREDIT CARD PAYMENT

Land Only Package - \$4147

per person in a double room

Land and Air Package - \$5520

per person in a double room

Single Room Supplement - \$1415

REDUCTIONS

3rd Adult in a room: -\$425

Tour Package Includes

Hotels: Dan Panorama Tel Aviv, Mt Zion Jerusalem, Kibbutz Kibbutz Lavi in the north

All Breakfasts, Friday night "Shabbat" Dinner and Lunch, 5 Weekday dinners and 2 lunches as per itinerary

Touring with Rabbi Kerbel and one of Israel's Top Tour Guide educators in a WiFi enabled deluxe touring Motor Coach

A Few Tour Highlights

Plant a tree in Neot Kedumim, Israel's biblical landscape reserve

Guided tour of the Ayalon Institute - an underground bullet factory

Tour the alleys of Old Jaffa, the ancient port city once known as the Gate of Zion

Shekhiyanu-Welcome ceremony on top of Tel Jaffa overlooking modern Tel Aviv

Tour the ruins of Caesarea, including Roman Theater, Promontory Palace, Hippodrome and Amphitheater Old

synagogues and picturesque alleys of Tzfat, cradle of Kabbalah (Jewish mysticism) in the 16th century Walk in

the lush Tel Dan Nature Reserve, one of the sources of the Jordan River, Kayak down the Jordan Tour the

Golan Heights, special security briefing on Mt. Bental by Lieutenant Colonel (res.) Sarit Zehavi Wine tasting at

the boutique Bahat Winery on Kibbutz Ein Zivan, BBQ dinner with young Israeli soldiers. Explore the bustling

Machane Yehuda Market and take in a slice of local life

Greet the Sabbath at the Western Wall. Option to pray together at the egalitarian "Masorti Kotel"

Shabbat morning services at Conservative/Masorti synagogue, Kiddush, sponsored by Rabbi Kerbel Briefing on

Israeli Politics by Steve Linde, editor-in-chief of the Jerusalem Report

Explore the City of David, including its ancient water systems

Set out across the Judean Desert to the Dead Sea, Swim in the Dead Sea

Tour the ruins of Qumran, where the Dead Sea Scrolls were found and hear about the aesthetic Jewish sect

Masada by cable car to tour the ruins of Herod's palace and the last outpost of Jewish independence. Lecture

on Religious Pluralism in Israel and the Masorti Conservative Movement by Rabbi Andy Sacks

Optional Eilat-Petra Extension: June 18-21, 2019 - Price per person based on double occupancy
4-5 Participants: \$1398 • 6-7 pax: \$1335 • 8-9 pax: \$1295 • 10 pax: \$1225 • tips for extension \$40

For additional information please contact Rabbi Paul Kerbel by email at rabbip@tbemc.org or call Rabbi 908-276-9231

Tour arranged by ITC Tours call Janine at 973-535-2575 or email janine@israeltour.com

Added to the costs above are tips for Guide, Driver, Restaurants, and Portage - \$195

*Tour price is based on 15 participants; price will increase with less participants and be reduced at 20 or more participants

"One does not travel to Jerusalem, one returns."



Sunday, June 7 - Depart USA

Monday, June 8 - Going up into the Land

- Arrive in Israel to be met and assisted by your ITC representative (today's program depends on arrival time)
- **Plant a tree in Neot Kedumim**, Israel's biblical landscape reserve, in honor or in memory of a loved one
- Travel to **Rehovot** for a guided tour of the **Ayalon Institute** - An underground bullet factory used by Jewish forces before the founding of the State of Israel
- Tour the alleys of **Old Jaffa**, the ancient port city once known as the Gate of Zion. **Shekhiyanu**-Welcome ceremony on top of **Tel Jaffa** overlooking modern Tel Aviv.
- Check-in to the **Dan Panorama Hotel** on **Tel Aviv's Mediterranean Coast**
- Welcome Dinner at **Maganda Yemenite Restaurant**
- Overnight: Dan Panorama Hotel, Tel Aviv

Tuesday, June 9 - The Hebrew City and the Jewish State

- Walking tour of historic "**Little Tel Aviv**" - Discover the quaint **Neve Tzedek** neighbourhood that gave birth to the "first Hebrew city in 2,000 years"
- **ITC Touch:** Discover **City of Sand and Sea**, a mosaic fountain created by artist and writer Nachum Gutman portraying scenes from the history of Jaffa and Tel Aviv
- Hear about the establishment of Tel Aviv standing at the **Founders' Monument** on **Rothschild Boulevard** and see the **Bauhaus architecture** for which central Tel Aviv was declared a UNESCO World Heritage Site
- Visit the new **Israeli Innovation Center** located in the **Tel Aviv Stock Exchange** to learn how Israel became the Start Up Nation
- Lunch on own and free time to explore the **Nachalat Binyamin Crafts Fair**. While there checkout the nearby **Carmel Market** and bohemian **Sheinkin Street** - All three of these Tel Aviv icons meet at the "**Magen David Junction**"
- Visit the **Palmach Museum** in **Ramat Aviv** to learn about the elite underground organization which played a critical role in founding the State of Israel
- **Free time to swim** in the **Mediterranean Sea** and enjoy **beachside promenade**
- Free evening. Dinner on own.
- Overnight: Dan Panorama Hotel, Tel Aviv

Wednesday, June 10 - Cradles of Jewish Civilization in the Galilee

- Depart for northern Israel
- Tour the ruins of **Caesarea**, including its **Roman Theater**, **Promontory Palace**, **Hippodrome** and **Amphitheater**
- **ITC Touch:** Learn about a rabbinic debate over Jews attending gladiator games
- **OR:** Explore **Tzippori** and study a Jewish text in the ruins of the city where Rabbi Judah Hanasi sealed the Mishna. Discover its magnificent mosaics, including **Mona Lisa of the Galilee** and ponder why an ancient synagogue's floor features a wheel of the zodiac.
- Lunch on own
- Tour the old synagogues and picturesque alleys of **Tzfat**, cradle of **Kabbalah** (Jewish mysticism) in the 16th century. Discover the origins of our Friday night service where **Lecha Dodi** was written.
- Free time to shop in galleries and explore **Tzfat's Artist Colony** on own
- **Boat ride on the Sea of Galilee** followed by a lakeside dinner at **Decks Restaurant**
- Check-in to the **Kibbutz Lavi Hotel** by the **Sea of Galilee**
- Overnight: Kibbutz Lavi

Thursday, June 11 - Ancient and Modern Geopolitics and Israel's Finest

- Walk in the lush **Tel Dan Nature Reserve**, one of the sources of the Jordan River, where you'll discover biblical intrigue and one of the oldest arches in the world
- **Kayak** down the **Jordan River** - Great way to cool off on a hot day
- Lunch on own
- Tour of the **Golan Heights** for a special perspective on Israel's complex geopolitics

as we "look down at Israel" the way the Syrian army once did and then look out at the border from strategic **Mt. Bental**

- **Geopolitical briefing** on top of **Mt. Bental** by **Lieutenant Colonel (res.) Sarit Zehavi**, a reserve IDF Intelligence Officer, on the current situation along the Israeli-Syrian ceasefire lines in the Golan Heights
- Wine tasting at the boutique **Bahat Winery** on **Kibbutz Ein Zivan**
- **ITC Touch:** **BBQ dinner with young Israeli soldiers**, who are giving some of the best years of their lives to the defense of Israel - Meet the human face of the Israeli army
- Overnight: Kibbutz Lavi

Friday, June 12 - Across Israel: A Multicultural Jewish Society

- **ITC Touch:** Discover **Ethiopian Jewish culture** at the **Germachin Center** in **Belt Shean**. Hear a personal account of this community's modern day Exodus story and about the challenges facing the Ethiopian Israeli community today.
- Lunch on own
- Continue south through the **Jordan Valley** and ascend to **Jerusalem**
- **Shekhiyanu/Welcome** ceremony overlooking the **Old City of Jerusalem**
- Explore the bustling **Machane Yehuda Market** and take in a slice of local life as you see Jerusalemites prepare for Shabbat. On the way, see the nearby picturesque **Nachalot** neighborhoods.
- Check-in to the **Mt Zion Hotel** in **Jerusalem**
- Free time to relax and prepare for Shabbat
- Join hundreds of other Jews from around the world to **Greet the Sabbath** at the **Western Wall**. Option to pray together as a congregation at the **egalitarian "Masorati Kotel"**, where men and women can stand together.
- **OR:** Attend **Friday night services** at a local Jerusalem synagogue
- **Festive Shabbat Dinner** at hotel
- Overnight: Mt Zion Jerusalem

Saturday, June 13 - And on the Seventh Day...In Jerusalem

- **Shabbat morning services** at a local Conservative/Masorati synagogue, followed by Kiddush, sponsored by Rabbi Kerbel
- **Shabbat Lunch** at the **Fuchsberg Center for Conservative Judaism**
- **Shabbat afternoon options:**
 - Walking tour to the historic **Montefiore Windmill** to discover the first neighbourhood built outside the walls of the Old City. Then continue to **Ketef Hinnom**, a First Temple period burial site where archaeologists discovered the oldest biblical text ever found.
 - **Havdalah** with Rabbi Kerbel
 - Dinner on own
 - **Recommendation for the evening:** Visit the **First Station Compound**, Jerusalem's restored Ottoman railway station turned restaurant - cafe area
- Overnight: Mt Zion Jerusalem

Sunday, June 14 - The Old City of Jerusalem - An Ancient Jewish Legacy

- Please choose one of the following ancient Jerusalem touring options for the group:
 - Explore the **City of David**, including its ancient water systems (without getting wet!), as we use the Bible and archaeology to decipher Jerusalem's ruins and uncover chapters in the city's past
 - **AND/OR:** Discover the archaeological story of the **Western Wall** and episodes from rabbinic texts while standing where Jewish pilgrims walked 2,000 years ago at **Robinson's Arch** and the **Southern Wall Excavations**
 - Visit the traditional prayer area of the **Western Wall**
 - Walk through the **Western Wall Tunnels** to discover underground Jerusalem
 - Lunch on own in the **Jewish Quarter**
 - Tour of **Jewish Quarter** including the **Herodian Mansions**, **Broad Wall**, **Roof tops** and **Cardo** followed by free time to shop and explore on own
 - Dinner at **Picolino Restaurant** in downtown Jerusalem

- **Dinner Briefing on Israeli Politics** by **Steve Linde**, editor-in-chief of the **Jerusalem Report** (and former editor-in-chief of the **Jerusalem Post**)
- Overnight: Mt Zion Jerusalem

Monday, June 15 - Masada and the Dead Sea: Freedom Fighters or Fanatics?

- Set out across the **Judean Desert** to the **Dead Sea region**
- Tour the ruins of **Qumran**, where the **Dead Sea Scrolls** were found and hear about the aesthetic Jewish sect that lived there 2,000 years ago
- Ascend **Masada** by cable car to tour the ruins of Herod's palace and the last outpost of Jewish independence
- **Swim** in the **Dead Sea**, the lowest place on earth, at a local resort. The resort also has a fresh water pool and spa facilities. Massage and spa treatments available by prior reservation at own expense.
- Lunch at **Dead Sea resort**
- Time permitting: Walk in **Ein Gedi Nature Reserve** opportunity to bath in waterfalls and hear how David hid there from King Saul
- Free evening. Dinner on own.
- Overnight: Mt Zion Jerusalem

Tuesday, June 16 - Holocaust, Remembrance and Continuity

- Guided tour of **Yad Vashem** Israel's national Holocaust memorial and museum, including the **Holocaust History Museum** and **Children's Memorial**
- Lunch at **Yad Vashem**
- Meaningful visit to **Mt. Herzl Cemetery** to discover chapters in the history of Israel while visiting the graves of **Yitzhak Rabin**, **Golda Meir**, **Theodore Herzl** and **Hannah Senesch**
- Engage in **hands on tzedakah** preparing food packages for distribution to some of Israel's neediest people at **Pantry Packers** in southern Jerusalem
- Free evening. Dinner on own.
- Overnight: Mt Zion Jerusalem

Wednesday, June 17 - Modern History and Geopolitics in Jerusalem

- Drive along the former Israel-Jordanian **Cease Fire** lines which divided Jerusalem between 1948-1967
- Multimedia tour of the new **Six Day War Heritage Museum** at **Ammunition Hill**, the site of the fiercest battle in the Six Day War
- Lunch on own
- **Geopolitical tour of Jerusalem** to examine several key geopolitical issues impacting on the city, including borders, building and settlement (Jewish and Arab) and Israel's security fence
- Look out over the **Holy Basin** (Old City and Temple Mount) from the **Haas Promenade**
- Free evening. Dinner on own.
- Overnight: Mt Zion Jerusalem

Thursday, June 18 - Wrapping Up and Departure

- Lecture on **Religious Pluralism in Israel and the Masorti (Conservative Movement)** by **Rabbi Andy Sacks**, Deputy Director of the Masorti Movement
- Visit **Yad Lakashish**, a unique employment project helping Jerusalem's elderly, including a stop in its shop "where shopping is a mitzvah!"
- Tour the **Israel Museum** to see the **Dead Sea Scrolls** in the **Shrine of the Book** and the **Model of Jerusalem** in the first century. Free time to explore additional exhibitions on own - **Recommendations: Modern Israeli art, Synagogue interiors** in the **Judaica** section and the **Archaeology Wing**.
- Lunch on own
- Remainder of afternoon free to explore on own and get in last minute shopping
- **Late check out**
- Farewell Dinner at **Olive and Fish Restaurant**
- Transfer to **Ben Gurion Airport** - See you again soon!

Friday, June 19 - Arrive in USA

- Begin planning your next Israel trip with Rabbi Kerbel and ITC Tours!

DO WE STILL LOVE THEM?



YEAH, YEAH, YEAH...WE SURE DO!!!

JOIN TBEMC'S SISTERHOOD AND MEN'S CLUB
FOR OUR ANNUAL JOINT BRUNCH

SUNDAY, NOVEMBER 17TH

BRUNCH AT 9:15am; PROGRAM IMMEDIATELY FOLLOWS

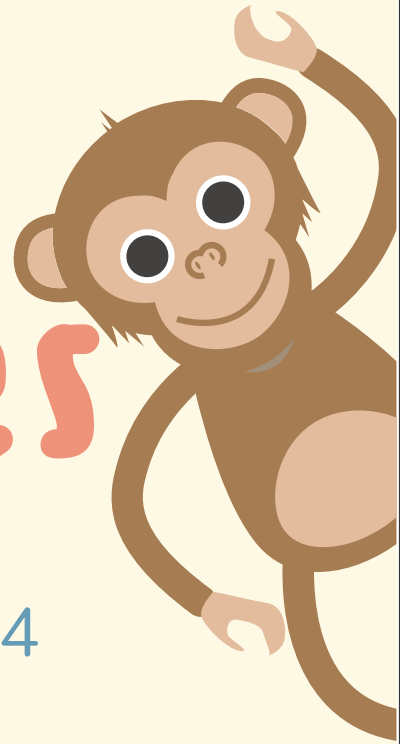
PLEASE RSVP BY TUESDAY, NOV. 12th TO
SIDNEY SOLOMON, (908) 272-4930

"FROM LIVERPOOL TO ABBEY ROAD"

Vincent Bruno, Beatles scholar and Sixties Rock Historian, will talk
about their lives, music and legacy for both the casual listener and the
hard core Beatles fan



Bagels & Babies



When: November 24

Time: 9:30-11 am



Who: Families with children
ages 0-3



Open to the community

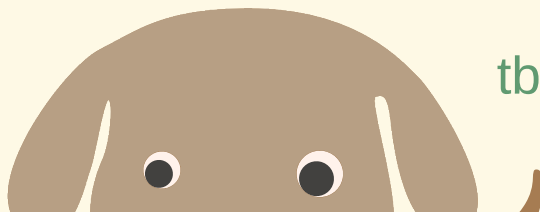
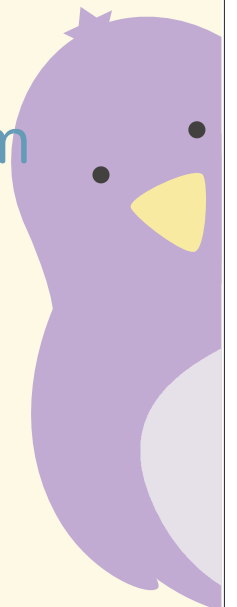
Free

RSVP: preferred by Nov 21
jessica.suckerman@gmail.com

Music, play, social time

Temple Beth-El Mekor Chayim
338 Walnut Ave., Cranford

tbemc.org





**JOIN CRANFORD KADIMA
AS WE HELP THE LIGHT SHINE.**

MENORAH MAKING

Dec. 15, 2019 | Noon

Let's celebrate Hanukkah together by making
a brand new menorah and eating pizza.
We will make air dry clay menorahs!

**TEMPLE BETH EL MEKOR CHAYIM
336 WALNUT AVE., CRANFORD NJ, 07016**

**RSVP BY DECEMBER 12TH TO
TBEMCYOUTHGROUPS@GMAIL.COM**





When it comes to Israel it often is.

HonestReporting defends Israel from media bias by exposing inaccuracy, misinformation, and other breaches of journalistic standards in its coverage of the Arab-Israeli conflict. HR's managing editor, Simon Plosker, will discuss **how the media gets it wrong, why it happens, when anti-Semitism is involved and how you can take action** that gets results.



Simon Plosker
MANAGING EDITOR
HonestReporting

Wednesday, November 20th 7:30PM

Temple Beth-El Mekor Chayim

338 Walnut Avenue, Cranford NJ 07016

Open to the public, \$5 suggested donation, light refreshments.

PRESENTED BY:



Central New Jersey

Questions and additional information: conradwho@gmail.com
or Conrad at 908-531-8228

SAVE THE DATE
TBEMC PRESENTS

TRIVIA? NIGHT!

Saturday

February 29, 2020

DOORS OPEN AT 7:30 PM | TRIVIA BEGINS AT 8:30 PM

EAT DRINK & TEASE YOUR BRAIN!

PRIZES RAFFLES

TRICKY TRAY | SILENT AUCTION

TEAMS OF 8 PLAYERS
WATCH FOR REGISTRATION DETAILS
TABLES FILL UP FAST!

TEMPLE BETH-EL MEKOR CHAYIM

338 WALNUT AVENUE, CRANFORD, NJ
908-276-9231 | OFFICE@TBEMC.ORG

CRANFORD USY INVITES YOU TO

BOARD GAME NIGHT

November 3, 2019 • 7:00 PM

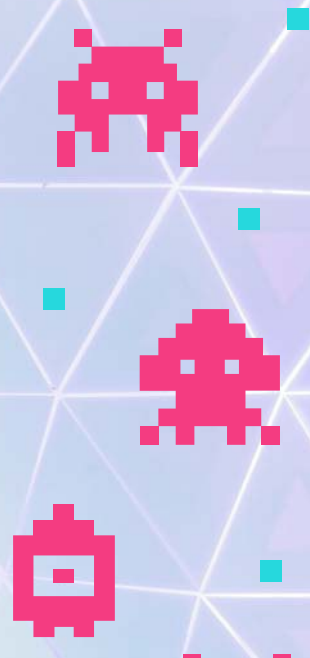
at TBEMC

RSVP TO ELLIE AT
TBEMCYOUTHGROUPS@GMAIL.COM

LET THE GAMES BEGIN!

Join us for a fun afternoon with your
Jewish friends in grades 5-7 playing
video games.

November 17th 2019
4:00 PM at Yestercades
in Westfield, NJ



TEMPLE BETH-EL
MEKOR CHAYIM

INSTALLATION of Rabbi Paul Kerbel 2019

FURTHER DETAILS TO FOLLOW

DECEMBER EIGHTH
AT TWO O'CLOCK PM

338 WALNUT AVENUE,
CRANFORD, NJ

908-276-9231 | office@tbemc.org

SAVE THE DATE

Community Inclusion Weekend

Join the TBEMC journey and learn how we welcome all people to our Jewish home. Presentations and programs all weekend long. Kiddush, oneg, dinners and more! Details to follow shortly.

Featuring renowned author, speaker and Jewish inclusion innovation expert Shelly Christensen

February 7-9, 2020

Temple Beth-El Mekor Chayim

338 Walnut Avenue, Cranford NJ

908-276-9231

office@tbemc.org | www.tbemc.org

All are welcome and invited. Members and non-members.

This program is made possible in part by support from the Jewish Federation of Greater MetroWest of NJ's, Greater MetroWest ABLE, the Gary Aidekman Family Foundation, and the Sylvia and Seymour Rubenstein Special Needs Endowment Fund



WE GRATEFULLY ACKNOWLEDGE THE MEMBERS OF THE TBEMC LEGACY CIRCLE

Jaclyn Baranoff	Jerald Baranoff	Allen Barkin
Julie Roffé Barkin	Carol Blank	Bernice Bedrick*
Spencer Brooks	Laura Cohen	Aaron Cohen
Charles Colodner	Gary Daniel	Judith M. Daniel
Susan Burde Eisenberg	Kenneth S. Eisenberg	Linda Ershow-Levenberg
David Levenberg	Heidi Farber	Leonard Farber*
Bertram Fine	Joan Finkelstein	Alice Gerson Goldfarb
Gary Goodman	Marvin Greenberg	Abbie Raicer Halperin
Howard Halperin	Lance Kandl	Phyllis Kandl
Fred Kant*	Clarisse Kant	Mark Kaplan
Deborah Kaplan	Frederic Kessler	Roberta Kessler
Sam Kimmelman	Jerome Krueger	Charles Leavitt
Sheila Levine	Mildred Lewis*	Nancy Lubarsky
Robert Meth/Estate of Meth	Martin Metzger	Rosi Metzger
Harold Oslick	Marlene Oslick	Lawrence H. Posner
Irwin & Thelma Rappaport	Rosalind Reiss	Adam Reissman
Rebecca Reissman	Roberta Rich	Laura Rubin
David Salomon	H. Gail Salomon	Rochelle Schwartz
David Schwartz	Alan Schwartz	Donald Shapiro
Charles Sporn	Trudy Springer*	Sandra Springer
David Springer	Myra Stein	Phillip Stein
Laurie Steinbach	Stephen Steinbach	Lois Rabbino Waldman
Len Waldman	Joy Weinstock	Michael Weinstock
Patricia Werschulz	Arthur Werschulz	

Each of these people has made a future gift to assure the survival of TBEMC. Thank you so much to each Legacy Circle member for caring and committing! You too can join the Legacy Circle by reaching out to David Springer at 908-370-1890 or Laura Cohen at 908-389-1744. *Of blessed memory



I/We have **also** made provisions, **and will complete a separate form**, for a legacy gift to the following community partner organization(s):

- ☐ Adath Shalom
- ☐ Bnai Keshet
- ☐ Congregation Agudath Israel
- ☐ Congregation Beth Israel, Scotch Pl
- ☐ Congregation B'nai Israel, Millburn
- ☐ Congregation Ohr Shalom-Summit JCC
- ☐ JCC of Central NJ
- ☐ Jewish Family Service, Central
- ☐ Jewish Family Service, MetroWest
- ☐ Jewish Service for the Developmentally Disabled
- ☐ Morristown Jewish Center Beit Yisrael
- ☐ Mt. Freedom Jewish Center
- ☐ Oheb Shalom Congregation
- ☐ Temple Beth Ahm Yisrael
- ☐ Temple Beth O'r Beth Torah
- ☐ Temple Beth Shalom
- ☐ Temple Beth-El Mekor Chayim
- ☐ Temple B'nai Or
- ☐ Temple Emanu-El, Westfield
- ☐ Temple Sinai, Summit
- ☐ YM-YWHA of Union County
- ☐ Other _____

Please return this form to the organization(s) you designated or to:

Karen Secular, Program Manager
Jewish Community Foundation
901 Rt. 10, Whippany, NJ 07981
973-929-2918
ksecular@jfedgmw.org

Thank you for taking this beautiful step to secure a strong Jewish future.

Confirmation of Commitment

I/we _____ have made provisions for a legacy gift to _____.

My/Our gift is in the approximate amount of \$ _____, **OR** _____ % of my/our estate or plan, and was completed through (check a box, please):

- | | |
|---|---|
| <input type="checkbox"/> Bequest/Will | <input type="checkbox"/> Life Insurance |
| <input type="checkbox"/> Retirement Plan Assets (e.g., 401(k), IRA) | <input type="checkbox"/> Charitable Remainder Trust |
| <input type="checkbox"/> Estate or Business Interest | <input type="checkbox"/> Other _____ |

(Please Print Clearly or Type)

Donor Name _____ Date of Birth _____

Donor Name _____ Date of Birth _____

Name(s) as you wish them to appear for formal recognition (without titles) _____

Street Address _____

City, State, Zip _____

The BEST phone number(s) to reach you. Please indicate cell or home. _____

Email Address or Addresses _____

Please check all that apply:

- ☐ You have permission to **recognize me/us publicly** (without gift type or amount)
- ☐ I/We would like our gift to remain **anonymous** at this time.
- ☐ I/We understand that you will inform the **designated organizations** of this gift.
- ☐ Please have a Jewish Community Foundation staff member contact me for a confidential conversation regarding my legacy gift.

I/We understand that this commitment is revocable and may be modified at my/our discretion. I/We will endeavor to notify the recipient organization(s) accordingly.

Donor Signature _____ Date _____

Donor Signature _____ Date _____

Recipient Organization Representative Signature _____ Date _____



TBEMC ADVANCE COMMITMENT

SPNSORSHIP OPPORTUNITIES

A SUPPLEMENTAL PATHWAY OF GIVING

DESCRIPTION AND CONCEPT

TBEMC is a really active place with many recurrent activities that we provide every year. While our Sustaining Pledge Model is the major means by which we support our operations, our experience here at TBEMC is that people enjoy sponsoring specific projects or purchasing specific items as a member.

This program gives you the opportunity to do both. It enables the congregation to plan in advance.

RECOGNITION AND PUBLICITY

The person who sponsors the event will be recognized in the programs or publicity related to the event.

HOW TO PARTICIPATE

Below is the form that needs to be filled out, signed and returned to the temple office. Members, their families and their businesses can be sponsors. For each sponsorship opportunity, payment in full now is needed for events occurring in September & October. After October payments are due to the office no later than 60 days prior to the event. We are asking for credit card authorization as a back-up if payment in full isn't received in time to enable the event to go forward as planned. If the sponsorship is for a non-event the payment is due in full.

FIRST COME, FIRST SERVED

If more than one person sends in a request to be the sponsor, the first person whose form is received will be given that opportunity and we will call the subsequent donor.

ONE YEAR AT A TIME

Each year is a new year, and one year's commitment doesn't obligate somebody to do it again.

CO-SPONSORING

You can be a co-sponsor if you line up the other co-sponsor(s) to cover the full cost, and they also submit their forms.

EVENT PLANNING

A Sponsor/Donor who is a TBEMC Member can be involved as a committee member with the event planning .

**QUESTIONS? Linda Ershow-Levenberg 908-351-9310 or
908-507-2366 - Linda.Ershow.Levenberg@gmail.com**

TBEMC ADVANCE COMMITMENT

SPONSORSHIP OPPORTUNITIES

Sponsorship		Cost
Library Acquisitions		
1	Library Acquisitions (12 Mo-Rqrd)	\$25 a month
Flowers		
2	Bima Flowers for special Events	\$300 each
3	High Holiday Bima Flowers	\$500
New Member Events		
4	Wine and Cheese reception	\$350
5	Bagels & Babies	\$100
6	Friday Night New Member Kabbalat Shabbat	\$350 Each
Children Religious School		
7	Rosh Hashanah Shofar Workshop	\$350
8	RH and YK Family and Youth Programs	\$300 each
9	Lulavi Etrog sets(3) for Religious School	\$180 each
10	Sukkot chol ha'moed events	\$250 each
11	Hanukkah Religious School Party	\$500
12	Pesach model Seder	\$500
13	Pesach Matzah Making Workshop	\$180
14	Siddur Ceremony Refreshments	\$360
15	Teddy Bear Sleepover	\$100
16	Patron of our special needs students	\$1000 each
17	Sponsor a Students Tuition	\$885
18	Religious School Leadership Development - 4 staff	\$1000 each
19	Supporting teen teaching Madrichim (6 teaching assistants)	\$500 Each
Full Congregation Events		
20	Kabbalat Shabbat newly installed Board	\$180
21	High Holiday Baby Sitting	\$300
22	Yizkor Book Printing	\$500
23	Erev Simchat Torah refreshments	
24	Simchat Torah Lunch (taken)	\$675
25	Sukkot chol ha'moed events for adults	\$750
26	TuB'shevat Seder	\$360
27	Erev Purim Snacks, graggers and supplies	\$250
28	Purim Carnival	\$500
29	Second Night Seder	\$575
30	Shavuot Cheesecake /refreshments	\$225
31	Senior monthly gathering (taken)	\$1,500
32	Sponsor a Shabbat Dinner	\$750 each
33	Sponsor a Tot Shabbat with dinner	\$750
34	Friday Oneg	\$180 each
35	Saturday Kiddush	\$360 each
36	TBEMC has been invited to be a "Signature Synagogue" of The Anti-Defamation League a lead synagogue in teaching about and engaging in education about anti-Semitism	\$500
37	Sponsor Rabbi Kerbel's two summer lunch and learns	\$500 each
Office & Administration		
38	Computer	\$1,500
39	Adobe Creative Cloud	\$624/year
40	Constant Contact Email marketing	\$500
41	Website expenses (12 Month-Required)	\$30/month
42	Postage - Yahrzeit letters (12 Mo-Rqrd)	\$25/month
43	Floor Polisher	\$950
44	Advertising: Newspaper, online and direct mail advertising. 12 month-Rqrd)	\$50/month
Ritual Needs		
45	20 copies new Rabbinical Assembly Pirkei Avot Lev Shalem for chapel for study and adult learning	\$550
46	20 Copies of new Rabbinical Assembly Mahzor Lev Shalem for chapel for study and adult learning	\$550
Rabbi's Office		
47	Dedicate the Rabbi's office Furniture and accessories by contacting Rabbi Paul Kerbel individually. -Computer, Desk Lamp, Standing light, Desk with side hutch and table, computer table with shelves and drawers, 3 Large bookshelves 6 shelves wide,	Discuss with Rabbi
Tzedakah Opportunities		
48	Purchase gift cards for ShopRite from the temple, for the Rabbi to give to families in need of food.	purchase in increments of \$50 and \$100

TBEMC ADVANCE COMMITMENT

SPNSORSHIP OPPORTUNITIES

A SUPPLEMENTAL PATHWAY OF GIVING

Name _____

Address _____

Phones _____ Email: _____

Credit Card Type: _____ Expiration Date: _____

Account # _____ Security Code: _____

I will sponsor the following event/project/program(s) per the attached Please include sponsorship number from the list below.

Sponsorship number #	Sponsorship Description	Amount Sponsoring
_____	_____	_____
_____	_____	_____
_____	_____	_____

I will provide payment 60 days prior to the event in question. All event sponsorships in September and October are due now. I understand that if my payment is not received by the temple office by the due date, my credit card will be charged, and I authorize the temple to do so.

Signature: _____ date signed: _____

**QUESTIONS? Linda Ershow-Levenberg 908-351-9310 or
908-507-2366 - Linda.Ershow.Levenberg@gmail.com**

SOMETIMES WE ALL NEED A LITTLE HELP



**TBEMC CAN PROVIDE MEDICAL EQUIPMENT
TO TEMPLE MEMBERS ON A PERMANENT
OR TEMPORARY BASIS**

FREE OF CHARGE

**CONTACT THE TEMPLE OFFICE
(908) 276-9231**

**A WE CARE REPRESENTATIVE WILL
CONTACT YOU DIRECTLY**

TBEMC Wall of Community



New tiles are going up on our community wall:

In memory of Millie Lewis, Brenda Klein, Lewis & Martha Heicklen, Ted Spitz, Simon & Irene Holtz Raicer (parents of Abbie Halperin), Ann & Samuel Halperin (parents of Howard Halperin)

To commemorate the Davidson family & the Bar/Bat Mitzvahs of Cole & Chase Turnof, Micah Berger, Amelia Bluman (granddaughter of Jonas & Linda Leifer)

To celebrate the marriage of Mitchell & Marina Merman and the birth of Steve & Tammy Merman's grandson

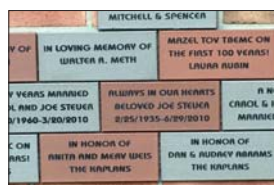
Why don't you join them and other congregants?
Become a part of this ongoing project; add to the wonderful menorah sculpture on our building. Watch it grow!

Commemorate the past. Celebrate the present. Inspire the future.

Join Temple Beth El Mekor Chayim's permanent tribute to those who have been a part of our community. Commemorative wall tiles, engraved with an inscription of your choosing, will honor your loved ones, family, friends, and celebrate important events in your life. Add to the inspiring tiles that have placed on the exterior wall entering the front of the building for all to see. Each permanent tile is only \$180. Each tile can have three lines of text, 20 characters in each line. Order forms are available.

If you are interested in reserving your commemorative tile online with a credit card, go to www.TBEMC.com and look for information about the commemorative tiles or mail in your check with the wording you want inscribed.

More information or questions: Sandy Springer, 908-507-3291 or sprfamily@verizon.net
Samples of some tiles already installed are below.



EARN MONEY FOR **TBEMC** WHILE YOU FOOD SHOP!

Everything you ever wanted to know about raising money for the Temple
by shopping with vouchers (scrip).

What is it?

The TBEMC Sisterhood's Voucher program sells gift cards (scrip) for ShopRite.

How does it work?

Shoprite has agreed to sell the gift cards to Sisterhood at a discount. You buy the cards at face value, and the synagogue keeps the difference. You get to participate in an important fundraiser, and it costs you absolutely nothing extra! You can use these convenient gift cards for your regular shopping or to give as gifts!

How can you participate?

We make it easy! Vouchers are available* in the Temple office, during any Sisterhood meeting or event, Board of Trustees meetings, or by contacting the Temple office, Sandy Springer (908-507-3291), or the chairperson, Linda Flaxman (908-276-9086), or linda@flaxman.com. We can make them available during Religious School hours, too, if there is an interest.

*Must be paid for at time of purchase

What else do you need to know?

Sisterhood donates all of the profits earned from the sale of vouchers back to TBEMC – to the Religious School, USYers, and special programs. Also, Sisterhood members earn 5% of their purchase price in donor credit, which goes toward their cost of attending the Donor Celebration in June.

More Questions?

Contact Linda Flaxman at 908-276-9086 or linda@flaxman.com. She will answer any other questions.





**BRAVO
PRINT & MAIL**

Pat Conway

T: 201.806.3750
F: 201.806.3760

pat@bravonyc.com
491A Washington Ave.
Carlstadt, NJ 07072

Thank you to Bravo Print & Mail for doing a Mitzvah for TBEMC

Jewish Hospice Care



- Excellent Nurse to Patient Ratio
- Home Health Aide Support for Family
- Bereavement Support Monthly Meeting
- Complementary Chicken Soup plus Harp and Massage therapies

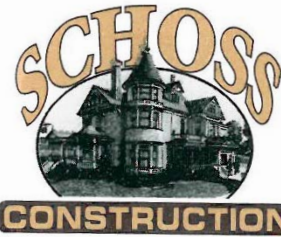


STEIN HOSPICE
at The Oscar and Ella Wolf Campus for Senior Living

**49 Veronica Ave., Suite 206
Somerset, NJ 08873
(732) 227-1212
www.SteinHospiceNJ.org**

Serving Union, Middlesex,
Somerset and Monmouth Counties

*Accredited by the National Institute
for Jewish Hospice*



Ethan Schoss
P.O. Box 969
Scotch Plains, NJ 07076

Office: 908-889-9042
Fax: 908-822-8840
www.schossconstruction.com

BRIAN T. DENNY

PH. 908-276-8062
ARNOLDSPESTCONTROL@GMAIL.COM

ARNOLD'S PEST CONTROL, INC.

COMPLETE TERMITE & PEST CONTROL SERVICE



INTEGRATED PEST MANAGEMENT
WWW.ARNOLDSPESTCONTROL.COM



INDUSTRIAL
COMMERCIAL
RESIDENTIAL

9 QUINE STREET
CRANFORD, NJ 07016

SCHWARTZ BARKIN & MITCHELL

Attorneys at Law

1110 Springfield Road
Union, New Jersey 07083-1339
(908) 688-1644 FAX (908) 688-9530
www.sbmcsq.com
sbarkin@sbmcsq.com

Commercial • Real Estate • Family • Collections
Estate Planning • Employment • Education
Appellate • Municipal Court • Land Use • Litigation

**HOWARD SCHWARTZ
ALLEN J. BARKIN
GAIL J. MITCHELL
ALDAN O. MARKSON
DAVID WENDEL**



Residential and Commercial Service
Scotch Plains, NJ • 908-222-1566
grandsanitation.com

INVESTMENT/MANAGEMENT
DIVISIONS

(908) 686-1800
Fax (908) 686-1839



MITCHELL KRAMER



BROUNELL



KRAMER REALTORS

1435 MORRIS AVENUE, UNION NEW JERSEY 07083

FINK ROSNER ERSHOW- LEVENBERG, LLC

ATTORNEYS AT LAW

60 WALNUT AVENUE • SUITE 202 • CLARK, NJ 07066
(732) 382-6070

WWW.FINKROSNERERSHOW-LEVENBERG.COM

FOLLOW OUR ELDER LAW BLOG POSTS AT:

WWW.LEGALNEWSYOUCANUSE.COM

ELDER & DISABILITY LAW

◆ WILLS, TRUSTS &
GUARDIANSHIPS

◆ MEDICAID
PLANNING,
APPLICATIONS &
APPEALS

◆ SPECIAL NEEDS
PLANNING

◆ PROBATE & ESTATE
ADMINISTRATION

PLANNING
PRESERVING
PROTECTING...

Your Life's Most
Valuable Assets

Certified Elder Law Attorneys,
Certified by the National Elder Law
Foundation, an ABA approved
organization approved by the N
Supreme Court

Just 2 minutes from GSP Exit 135



EUROPEAN  WAX CENTER®

THE ULTIMATE WAX EXPERIENCE

FREE^{*}

BODY WAX

FOR FIRST TIME GUEST

520 North Ave. in Garwood
(Across from ShopRite, next to Massage Envy)
908.789.1515 or www.waxcenter.com

The Weisman Family

*Call for details
OPEN 7 DAYS

Like us on Facebook!



If you are a member of Facebook, you can help TBEMC by sharing our news, stories and promotions about social and fund raising events.

You can simply hit the "SHARE" button to share all that we do with your family and friends who may be interested in some of the things that we do at TBEMC.

We have two Facebook pages, one for the general synagogue and one for religious school. If you haven't already, please like both pages. The links are below. Then you can easily hit the "SHARE" button each time exciting news and events appear on your page!

TBEMC MAIN TEMPLE LINK

<https://www.facebook.com/TBEMC/>

RELIGIOUS SCHOOL LINK

<https://www.facebook.com/Temple-Beth-El-Mekor-Chayim-Religious-School-185439761483723/>

Office Hours By Appointment



DANIEL T. GINTER, D.M.D.
Oral and Maxillofacial Surgery
Specialty Permit #2890

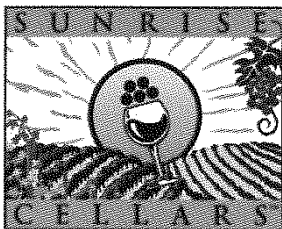
34 Forest Avenue
Cranford, New Jersey 07016-2412
Telephone: (908) 272-3950
Fax: (908) 709-3710

**BERNHEIM APTER
REITZMAN**
Suburban Funeral Chapel

68 Old Short Hills Road • Livingston, NJ 07039
(973) 422-0600 • Fax (973) 422-0606
(800) 938-6372



LICENSED MANAGER: LOUIS J. URBAN NJ LIC. NO. 3537
RICHARD M. SCHUELE NJ LIC. NO. 4043



ShopRite
Wines and Spirits
of Westfield

Ken Kimble
Store Manager
908-232-8700 phone
908-232-8099 fax

333 South Avenue East, Westfield, NJ 07090
ken.kimble@sunrisecellars.com

(732) 574-2040

DELI KING CLARK

Restaurant/Catering/Delicatessen

30 Clarkton Drive
Clark, New Jersey 07006
(Located in the Clarkton Shopping Center)

Beckerman & Company

Professional Insurance Managers

**We represent over 25 insurance Carriers offering competitive choice
for all your Business & Personal Insurance Needs!**

www.beckermanco.com

430 Lake Avenue
(732) 499-9200

Colonia, NJ 07067
Fax (732) 499-9050