

October 2019
Tishrei-Cheshvan 5780

TEMPLE BETH EL MEKOR CHAYIM

Contents

From the Rabbi	1
Bima Accessibility	2
President's Report	3
Sisterhood	3
Classes.....	4
Hazzan Fortune Belilos.....	4
Break the Fast	4
Religious School	5
Underwrite.....	5
Lifelong Learning	6
CJL	6
Community.....	7
Torah Fund.....	7
Youth.....	8
Fundraising.....	9
Holiday Schedule	10
Sukkot Schedule	11
Yahrzeit	12
Donations.....	13

Temple Beth-El Mezor Chayim
338 Walnut Avenue Cranford, NJ 07016
(908) 276-9231 | www.tbemc.org

Rabbi Paul Kerbel

Temple Administrator Laurie Lindner

President Mark Kaplan

First Vice-President Tammy Kaplan

Second Vice-President John Harris

Third Vice-President Phyllis Kandl

Immediate Past President Jackie Baranoff

Treasurer Mindy Kipness

Financial Secretary Alan Schwartz

Corresponding Secretary Becca Reissman

Editors: Debbie Abrams Kaplan and
Devorah Wolf

Thanks: Art Werschulz, Howard Epstein

To Submit Articles or Letters to the Editor:
bulletin@tbemc.org

A Few Words From the Rabbi... What Time is It?

Rabbi Paul David Kerbel

There is a wonderful story about an American tourist who stops an Israeli on the street and the following conversation ensues:

"Can you please tell me the time"

"I am sorry," replied the Israeli, "I don't have a watch."

"You don't have a watch! How do you know what time it is?"

During the day, it is simple; I just ask someone."

"But what do you do at night?"

"For that, my friend, I have a shofar!"

"A shofar? How do you tell time with a shofar?"

"That's simple! If I wake up in the middle of the night and want to know what time it is, I open my window and I blow the shofar as loud as I can. A neighbor will always call out, "You idiot! Why are you blowing the shofar at 3:30 in the morning?" Now I know what time it is!"

Whether this story is true or apocryphal, our friend in the story is teaching us an important lesson: the purpose of the shofar is to serve as our seasonal alarm clock. And this story reinforces the teachings of Moses Maimonides, ("The Rambam") who wrote in the most important halachic work of his time, the Mishneh Torah, (in the 13th century):

"Awake from your slumber, all who are asleep and ponder your deeds, remember your Creator and return to him in sincere repentance."

On Rosh HaShanah we gather in our sanctuary to listen to the piercing sounds of the shofar. When we hear the shofar we know exactly what time it is. It is a time for us to reflect, it is time to take our moral inventory, it is time to evaluate our lives, it is time

(continued on next page)

RITUAL

Even when it's not a holiday - Come to minyan and be counted! Evening minyan is Mondays, Tuesdays and Thursdays at 7:30. Please see the online calendar for the minyan schedules for holidays and regular days.

WE CARE

After a very successful first year, the WE CARE committee looks forward to continuing to provide support through doing deeds of loving kindness for our TBEMC community. Many thanks to all those that have volunteered this past year in the many areas that WE CARE provides services to our community.

Volunteer opportunities are available in the following areas:

The We Care committee is looking for a volunteer to send out preprinted monthly birthday cards to our congregants. Also needed: meal prepping and delivery for those in need, Homework Club Tuesdays 3-4 pm at TBEMC, Shiva meals, providing transportation, helping with senior monthly gatherings, medical apparatus lending library, mailings and correspondence, monthly birthday cards and get well cards, making telephone calls, home visitations, hospitals and nursing home visitation and food bank collections.

We welcome anyone wishing to volunteer in providing deeds of loving kindness; any amount of time is appreciated no matter your age or availability. Please contact Dave Salomon at (908) 868-9028 or email dsalomon8648@gmail.com

LIBRARY

So many new books! Please check them out. Books are made possible by your DONATIONS. Thank you and, I hope all TBEMC readers will please continue their generosity.

- Donate to just to donate
- Donate in someone's name, honor or special occasion
- Contribute to the new Howard & Abbie Halperin Library & Education Fund

Call the office or Abbie for more information, ANY suggestions or questions. Abbie can be reached at (908) 337-5256 or abhalperin@gmail.com. Remember to return the books as soon as you can so everyone can borrow them.

Thank you.

Abbie Halperin

to assess our behavior, and it is time to review our actions.

Listening to the sounds of the shofar helps us remember to ask ourselves whether we have made the best use out of the year that has passed and what goals, secular and Jewish, personal and communal, we would like to achieve in the year ahead.

In the Musaf service, we recite a prayer, Unetane Tokef, which provides us with the most daunting and self-reflective moment of our holy day: "We are like a fragile vessel, like the grass that withers, like the flower that fades, the cloud that vanishes, the wind that blows, the dust that floats, the dreams that fly away."

On Rosh HaShanah and Yom Kippur, we tend to realize how short our lives are, how much time we have wasted and how many good deeds and actions we need to accomplish to make a difference to our family, to our synagogue and to our community. Rabbi Sidney Greenberg wrote, "The number of our years may be beyond our control, but the quality and texture of our lives depends on us."

As we listen the sounds of the shofar, it is time for us to ask, "What time is it?" And I would suggest we answer our own question by saying:

"Now I better hurry, to show the love, to give the attention and concern, to do my part to help make our world a better place, before the gates of life close behind me."

Wishing you and your family a shanah tovah u'metukah – a meaningful and sweet New Year.

Bima Accessibility

**Thank you to ALL who have sponsored a part of this project.
All donors will be recognized in a prominent display.**

There are still many opportunities for sponsors and we encourage chair sponsorships.

Stair Railings (4)	\$7,200
Lift Railings	\$3,600
Stair Railing (Individual)	\$1,800
Congregational Seating Row	\$1,800
Clergy and Bima Chair	\$1,080
Ark Sheer Curtains	\$360
Individual Congregational Seat	\$180
General Support	any

Thanks to all who support our accessible sanctuary project! *Laura Cohen*

President's Report

Mark Kaplan

As I am writing this, the High Holidays are upon us. Like you, I am taking stock of the previous year: what were my accomplishments, where did I fall short, and where can I do better next year?

Your Board of Trustees participated in a similar exercise on September 8th. Led by our own Susan Harris, and joined by Rabbi Kerbel, your Board spent four hours on a Sunday undertaking the development of a Strategic Plan for the next 2 years. We started with a SWOT analysis: for those unfamiliar with this, it helps us to identify our Strengths, Weaknesses, Opportunities and Threats. After much discussion as a whole and in small groups, we reached a consensus for our top priorities that will encompass our focused attention for the immediate future. Our top 5 identified areas for concentration this year include Fundraising, Inclusion, Rebranding, Lay Leadership Development and Community Outreach. You will be hearing more details as we embark on this plan.

As important as strategic planning is, it's equally important to maintain a healthy connection between our lay leadership and our congregation. On November 24th, Rabbi Kerbel and I will host a congregational Town Hall meeting from 10:30-12 in our sanctuary. Please come with your questions, hopes and concerns so we can all listen to each other about what's important to us within our community. And afterwards you can go seamlessly to the Men's Club Annual Thanksgiving Kids' Party.

Speaking of planning, on October 5th we are having a special Shabbat service in honor of Lenny Farber and his family. Lenny, in addition to being a wonderful congregant, made sure his legacy endured, and left TBEMC a generous bequest. His family, inspired by Lenny's example, provided a matching gift. I hope to see you at this very special event honoring Lenny and his commitment to TBEMC in perpetuity. Moreover, if you are not yet a member of our Legacy Circle, I invite you to join me, my wife Debbie, and 76 other Legacy donors in being a good steward and making a bequest to TBEMC. Please reach out to me, or to Legacy co-chairs David Springer and Laura Cohen with any questions.

From my home to yours, Debbie, Dori, Zack and I wish you all Shana Tovah. May it be a good year for us all.

L'Shalom

Mark Kaplan

Sisterhood

Join Sisterhood for Exciting Programs
2019-2020

Tuesday, September 17
Meet & Greet Rabbi Paul Kerbel

Thursday, October 24
Learn about Essential Oils

Sunday, November 3
Rummage Sale

Sunday, November 17 brunch
Vinnie Bruno's Rock & Roll

Tuesday, December 17
TBA Paid Up Membership meeting

Tuesday, January 21
Yoga

Tuesday, February 18
Hamantaschen & Hooch

Wednesday, March 4
Pack Purim Bags

Sunday, March 22
Rummage Sale

Sunday, April 19 brunch
Holocaust Program

Friday, May 15
Sisterhood Shabbat

Tuesday, June 2
Donor Dinner, year-end celebration

SISTERHOOD

Rummage Sale Save up your Rummage items – the Sisterhood Rummage Sale will be held on November 3.

Yiddish Class Join us for Yiddish class every Monday at 4:00. Girsch Sorkin is teaching. Contact office@tbemc.org or call at (908) 276-9231 for questions.

Women's League Cards to benefit Women's League for Conservative Judaism: Whenever you need a card for a birthday, anniversary, graduation, etc., or for condolences, call or e-mail me. I can write your message and mail a Sadye Ross Book of Memories card for you. Just \$3.50 per card sends your message out and donates money to Sisterhood. You can also buy 10 cards for just \$30 to have cards on hand to send out on your own.

Liela Bernstein

lielaberns@comcast.net (908) 233-0058

**SISTERHOOD
is
POWERFUL**

Classes

TORAH WITH LAURA

We have many openings for upcoming haftarah!

Have you thought about re-learning your bar or bat mitzvah haftarah? Do you want to try out a new ritual skill? Do you have a special family occasion coming up that would be appropriate for the honor of chanting a haftarah? Are you willing to put some time into practice? Lessons and assignments for Torah and haftarah readings! This is your one-stop shop! Please reply if you have a specific request or just want to learn how to do it.

Laura Cohen, cell (848)702-9106

HEBREW

Hi everyone! I would like to start a new Hebrew reading class. The class would be for beginners and those who had training as a child, but their skills have lapsed. Contact me if you are interested!

Liela Bernstein

(908) 233-0058, lielaberns@comcast.net

AARP DRIVERS SAFETY COURSE

Liela Bernstein is, once again, offering AARP Safe Driver courses at TBEMC:

Wednesday–Thursday, October 23–24
6:30 pm–9:30 pm

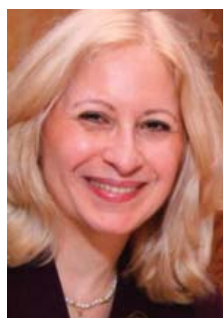
Each 2-day, 6-hour, refresher course is designed to assess and refine one's driving skills. All drivers are welcome to attend, from newly minted to experienced.

Completion of the course entitles you to a 5% discount on the major portion of your insurance premiums for a period of 3 consecutive years, at which time the course must be repeated in order to maintain the discount. Two violation points will also be deducted from your Motor Vehicle record, if applicable.

\$15 per AARP member and \$20 per non-member. Make your check payable to "AARP" and bring it to the first session. To register, call Liela at (908) 233-0058, 7:30–10:00pm Monday through Thursday or e-mail lielaberns@comcast.net

TBEMC Welcomes Hazzan Fortunee Belilos Home for the Holidays

Hazzan Belilos, who served as our cantor at TBEMC from 2005 through 2007, will be joining Rabbi Paul Kerbel on the bima to lead our High Holiday services on Rosh Hashanah, Kol Nidre and Yom Kippur. Hazzan Belilos divides her time between leading services, teaching and reading Torah at a variety of venues, including two synagogues, and two Council on Jewish Elderly Senior Life residences on Chicago's North Shore. She was board certified in 2015 by NAJC – Neshama: Association of Jewish Chaplains. Hazzan Belilos spent 10 years as an on-call hospital



chaplain and concurrently joined JCFS Chicago in 2010 where she now serves as a Jewish spiritual care specialist with the Jewish Chaplaincy Community Initiative. Her work includes visiting homebound individuals and providing regular Jewish programming and spiritual support (along with occasional homemade edible treats) to predominantly Jewish residents of senior communities, rehab centers and nursing homes. "I have been blessed with a rich professional tapestry: the listening I do as a chaplain complements the emoting I do as a hazzan."

Hazzan Belilos lived in Israel for 3 ½ years and on the "friendly" island of Saint Maarten for 8 years. Before entering cantorial school, she performed with professional light opera companies in and around Chicago, including The Opera Factory - a company devoted entirely to the performance of zarzuelas - and Light Opera Works. A 2005 graduate of the Miller Cantorial School at the Jewish Theological Seminary in New York City, Hazzan Belilos' first pulpit after investiture was in Cranford, NJ, where she is thrilled to be returning to help usher in 5780. Please join us as TBEMC welcomes Rabbi Kerbel and welcomes back Hazzan Belilos for the holidays!

TBEMC Men's Club "Break the Fast" Wednesday, October 9

Please join us immediately following Havdalah.

\$14 per person, \$7 for children from ages 5 to 12, and children 4 and under are FREE.

Please RSVP and make your payment by October 3 so that we know how many people are coming.

Temple office (office@tbemc.org) Lance Kandl at (908) 868-8191, lbkandl@gmail.com.

You can also pay on the Temple shulcloud website at <https://tbemc.shulcloud.com>

As always, Sisterhood prepares a light break-fast for all in the lobby after services.

Religious School News

TBEMC Religious School Provides Education for All Age Groups

The TBEMC Religious School fosters love for G-d, prayer, Torah, and community. We offer a range of Jewish education for the entire family. Religious School is Sundays from 9-12 for all grades, and Tuesdays from 4-6 for 3rd-7th grades. When students reach Bar/Bat Mitzvah, they will have learned skills in Hebrew reading, prayer and understanding of Jewish holidays.

Students begin in kindergarten through 2nd grade with hands-on learning that includes holidays and Hebrew letters. Temple membership is not required until 3rd grade. With our new Sustaining Pledge Model, more



young families are joining an earlier time, because we have a more flexible donation model without a set dues amount.

The Gan Katan class held bi-weekly for ages 3-4, is filled with joy through art, music, storytelling, dancing and friendship. Temple membership is not required for this program, which begins the foundation of Jewish life for each child.

Tot Shabbat for children 0-6 years is held monthly and helps light a spark that connects children to Judaism at a young age. We develop the habit and joy of praying with the community. Temple members and non-members are warmly welcomed.

Parents are encouraged to enhance their Jewish education through Shabbat Junior Congregation and Sunday morning prayer service.

We welcome you to register throughout the year for Gan Katan through 7th grade classes. Any time you decide to register is the right time! We recognize that there are traditional and non-traditional family units with unique spiritual needs. It is our goal to open our doors to all who seek a congregation such as TBEMC.

Contact the office or Doni Remba for more information.



The parents enjoyed a first day of Religious School brunch, and an opportunity to socialize with each other and with Rabbi Kerbel.

Underwrite

Verb:/[uhn-der-rahyt, uhn-der-rahyt]

to show agreement with or to support to bind

oneself to contribute a sum of money (to an undertaking)

Birthday, anniversary, baby, new job, retirement, good news, good health, good luck, goodbye...the reasons are infinite. The best reason? To support Sisterhood.

Sisterhood provides the Oneg and Kiddush each week it is not sponsored. We financially support the Religious School, library, USY and Kadima youth groups. We joyfully present B'nai Mitzvah gifts and donate to synagogue projects.

The Sisterhood Saturday Kiddush is prepared for the congregants attending services, approximately 30-40 attendees each week. The cost is 10 times Chai, \$180. Please pick a date and let us know what to write on your special cake. We appreciate your support!

ONEG AND KIDDUSH

Sisterhood joyfully prepares and platters the Oneg and Kiddush each week that it is not sponsored. Please sign up to help. Ask a friend to join you who hasn't experienced the Friday morning fun yet, beginning at 10 ending by noon or earlier. The more people who sign up, the more fun and easier it is on everyone! Don't just think that "someone else will do it." We need you one and all. (Men and women wanted. No experience necessary.)

Contact Carol Blank to volunteer at (908) 272-7254 or mail2duck@aol.com.

COMMUNICATIONS

In order to take full advantage of our communication resources please coordinate all events with the temple office. By doing so you'll have the ability to advertise your event in the following places:

weekly eblast	website
bulletin	calendar
Facebook	Shabbat handout
local newspapers	and more

You'll also be able to request an electronic payment page on the website for your event. We look forward to helping all event coordinators "get the word out" and having all our events successful.

communications-team@tbemc.org

LIFELONG LEARNING

Major Issues Facing the Jewish People

Why the Jews? An exploration over four weeks on why the Jewish people have been the object of the most enduring and universal hatred in human history.

Four Thursday evenings:

October 31, November 7, 14 and 21

Minyan at 7:30 pm

Refreshments at 7:45pm

Course 8:00 pm - 9:15 pm

SAVE THE DATE Film Series

The Lifelong Learning committee will be starting another film series this month. They run on Sundays at 4:00 pm in the Youth Lounge. Put the dates on your calendar! The theme is comedy films, with a Jewish theme and/or Jewish content.

November TBD March 29, 2020

December 29, 2019 April 26, 2020

January 26, 2020 May 17, 2020

February 23, 2020 June 14, 2020

JVS

JVS Offers a Broad Range of Job Counseling Services

If you or someone you know is unemployed and looking for work, changing careers, re-entering the workforce, or is a recent college graduate and seeking a job for the first time, we can help. JVS Career Counseling & Placement offers high-quality career services — at no or low-cost to you. Services include: one-on-one career counseling and job placement, resume writing, interview training, mentoring, support groups, workshops, vocational testing, and more. For information, contact Dr. Meryl Kanner at JVS:

mkanner@jvsnj.org
973-674-6330 x 271

IN THE NEWS

The New Jersey Jewish News wrote a great article about Rabbi Kerbel's background and move to TBEMC. You can read it here:

<https://njewishnews.timesofisrael.com/new-rabbis-cross-country-career-brings-him-to-temple-beth-el-mekor-chayim/>



MAKE THIS YOUR YEAR

We are well into the High Holiday season, and one of the highlights is always the face-to-face interaction of ticket pickup. In an electronic age, this is very refreshing. We see so many long-time members, and welcome our newest families as well. For CJL, this interaction is a great time to publicize the previous commitments from individuals we have already secured, and to share the story of why those commitments are important to the future of TBEMC. Laura Cohen and I thank so many of you who listened to our "sales pitch" for future donations so crucial in supplementing temple income down the road.

We also again thank the newest members of our Legacy Circle who made new commitments this past month – Liela Bernstein, Ruth Bernstein, Seth Farber and Les Levine. This past month, many of our Legacy Circle members were honored at a special event hosted by the Jewish Community Foundation. We are very pleased to report that TBEMC continues to lead the pack in number of legacy gifts. TBEMC will be honoring the Farber family for their decision to match their father Len's legacy commitment on October 5, 2019 by dedicating a Torah to the memory of both Anne and Len Farber, two people who made a lifelong difference here. Please join us.

We again ask your help to move ahead. Many of you expressed positive interest in participating in our future giving program. Keep Judaism and TBEMC alive now! The process is painless. Making a legacy gift now does not take current dollars away from your personal use. Your commitment represents a FUTURE gift. Our gifts range from \$1,800 to \$100,000 and each one matters, no matter what size! Call David Springer at 908-370-1890 or Laura Cohen at 908-389-1744 to join our Legacy Circle, or fill out the commitment form located in this Bulletin. Be a "good ancestor" and make your family proud of you. We can't wait to hear from you!

David Springer and Laura Cohen



COMMUNITY

LOL Comedy Show to Support the Bilenkers

Project Help and VetREST are hosting the LOL Comedy Show on October 11, to help the Bilenker family with the costs associated with Art's care. There are many ways you can support this fundraiser, including donating items to the silent auction, sponsoring the event, publicizing the event and selling tickets.

The LOL Comedy Show will take place on October 11, 2019 at the Vet Center VFW Post 2230, located at 33 South 21st Street, Kenilworth, beginning at 6:30 pm. In addition to the four featured comedians, there will be a silent auction, 50/50, and buffet dinner.

To sponsor the event or provide items for the silent auction, contact Sandy at 973-875-2068. More information at <https://projecthelp.us>. Tickets are on sale at <https://lolcomedyshowNJ.eventbrite.com>. More information can be found here as well: <http://bit.ly/2Lcm2OK>

Crop Walk

TBEMC has been collecting money for the Crop Walk for many years. Crop Hunger Walks are sponsored by Church World Services.

The Crop Walk raises money to end hunger in our community and around the world. In Cranford, all the churches and our synagogue participate. Paula Figman, Renee Herz and Harriet Mazur represent our Temple for this activity.

Crop Hunger Walks have raised over \$300 million to help people feed their families around the world and in our community. The walk supports local food banks and our Temple gives money to Mazon. Mazon is an American non-profit working to end hunger among people of all faiths and backgrounds in the United States and in Israel.

We collect money at our Temple when people come for their High Holiday tickets. If you missed the opportunity to contribute and would still like to help, contact Harriet, Paula or Renee for more information.

Thank you to the Kiddish donors.
Joe Bloomfeld

Torah Fund

Every woman has the opportunity to participate in preserving, promoting and perpetuating Conservative/Masorti Judaism through active giving to the [Torah Fund Campaign](#) of Women's League in support of the Jewish Theological Seminary (New York, NY), Ziegler School of Rabbinic Studies (Los Angeles, CA), Schechter Institute of Jewish Studies (Jerusalem), Seminario Rabinico Latinoamericano (Buenos Aires), and Zacharias Frankel College (Potsdam).

The Torah Fund campaign began in 1942 as a scholarship fund. In 1963, it merged with the Mathilde Schechter Residence Hall campaign that provided housing for undergraduate students. In time, the campaign identified needs and raised funds for specific projects, including:

Women's League Educational Pavilion (Kripke Tower)
Mathilde Schechter Residence Hall Renovations
Women's League Seminary Synagogue
Goldsmith Hall
JTS Quadrangle
JTS Library Bookshelves
Schechter Institute of Jewish Studies Garden
Residence Hall at the American Jewish University



For the past several years, funds raised by Torah Fund have gone toward scholarships to all the schools. There are continuing opportunities for sisterhoods and individuals to provide support to all four institutions through Torah Fund. Thousands of dedicated volunteers have contributed to the spiritual, esthetic and material well being of these educational communities by supporting Torah Fund projects.

The 5780 (2019-2020) Torah Fund pin depicts a heart surrounded by three circles, one larger than the next. This symbolizes the heart of kindness, which Jews enact in ever-widening realms of generosity: from family, to community, to the larger world; from North America, to Israel, to the world; or from sisterhood, to region, to the larger world of Women's League for Conservative Judaism. And as it is said in Psalm 89, may we build a world of kindness.



ADL Regional Director Evan Bernstein Briefs New Jersey Synagogue Leaders on Anti-Semitism



TBEMC Youth

The 2019 - 2020 school year is here! This year USY and Kadima have some great events planned. As always, we are looking for new and old members to register for USY. To register as a member of USY or Kadima, fill out the form here:

<http://bit.ly/2MZqZZV>

or email TBEMCYouthgroups@gmail.com for more information!

Right now we are looking for VOLUNTEERS for project Isaiah. If you need of volunteer hours to satisfy a school requirement this is a great opportunity to earn three hours. USY is looking for teens to help sort the collected food during the Yom Kippur Break. There will be many more volunteer opportunities this year to help you with your school requirement!

Please take a look at the current calendar of events and kindly consider joining USY or Kadima!

Ellie Barkin-Baron

TBEMCYouthgroups@gmail.com

TBEMC Youth Calendar of Events

OCTOBER 9 PROJECT ISAIAH

Join USY in sorting the collected food donations during the Yom Kippur break. This is a great opportunity to earn volunteer hours.

October 13 PIZZA IN THE HUT @ 12:00 pm

This event will be open to the entire congregation. This event is a fundraiser for TBEMC youth groups. Make some cool decorations for your sukkah, eat some pizza, learn with the rabbi and help us make sandwiches to donate to the surrounding community. See the flyer for more information.

November 3 BOARD GAME NIGHT

@7 pm, TBEMC

November 17 YESTERCADES

Social Event - TBA

Are you a video gamer? Do you want to meet young Jewish people like you? Come game with Kadima at Yestercades, to make some new friends and have a good time doing what you love!

2019-2020 Hagalil USY Calendar

Event	Date
Mid-Atlantic District Encampment	August 19-26, 2019
Hagalil Freshman Fun Day	September 8, 2019
USY Kickoff	September 22, 2019
Hagalil LTI Day	October 6, 2019
Hagalil Kadima Opening Event	October 27, 2019
Hagalil USY Fall Kinnus	November 15-17, 2019
Hagalil Kadima Fall Kinnus/8th Grade Overnight	November 22-24, 2019
Pre-Convention	Date TBD
International Convention	December 22-26, 2019
Junior/Senior Prom	January 11, 2019
Hagalil USY Mid-Winter Kinnus	January 31-February 2, 2019
Purim Bash	Date TBD
Hagalil Kadima Spring Convention	May 1-3, 2019
Hagalil Spring Convention	May 15-17, 2019
Israel Parade	June 7, 2019



USY and Kadima had a great time playing laser tag



Fundraising

Gift Cards Sisterhood sells gift cards all year long. Use them instead of your credit card when grocery shopping as well. When you buy your gift card through Sisterhood, TBEMC gets a percentage of every card, and it costs nothing extra. Did you know that 5% of every ShopRite card you buy goes to TBEMC? While you may forgo your credit card rewards in using them, you'll be making a valuable donation to the shul.

How to Get Gift Cards Linda Flaxman is the queen of gift cards. Email Linda at linda.flaxman@rutgers.edu to order them. She's often at the Sunday morning minyan with her box of cards, as well as other synagogue events.

The temple office has several types of grocery store gift cards. Come in during office hours (including the start of Tuesday Hebrew School).

Gift cards bring in thousands of needed dollars to TBEMC every year. Though it may take a little adjustment in how you do your grocery shopping, purchasing or ordering cards from Linda and not picking them up at the store, does a mitzvah. Cards include: **Shoprite, Acme, Kings, Barnes & Noble, Dunkin' Donuts, Starbucks, Home Depot, Lord & Taylor, & Claire's.**

Cars for Cash Are you looking for a tax break for next year? One great way to support TBEMC is by donating your used car. You get the full tax deduction and TBEMC gets the majority of the donation. To donate, go to the "Support the Temple" part of TBEMC's website, click "Support by Shopping" and then click "CARS." For questions or more info on this easy donation process, please contact Mark Kaplan at 908-232-5498 or markikaplan@hotmail.com

Support TBEMC

Use the Support by Shopping Link

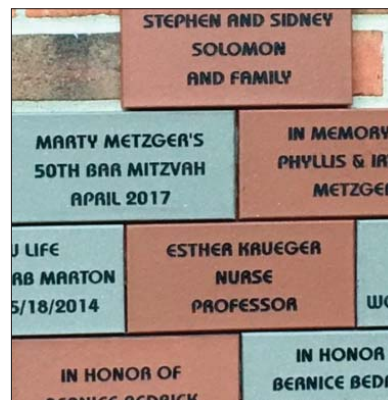
Amazon has historically generated the most revenue for the Temple in terms of support by shopping (with the exception of car donations), but we can do much better. Use this URL to support TBEMC by shopping with Amazon, Barnes and Nobel, Jewish National Fund, car donations, JDeal, Escrip, Israel Bonds: Use the link on the TBEMC site, or bookmark: <http://tbemc.org/shopping/>

Please send me an email if you have any difficulties or any questions.

—David Thaler, mediatorthaler@hotmail.com

Wall of Community

This is a reminder about our ongoing commemorative tile project. We will continue ordering tiles, and an order is placed when we have five or more or more orders. You can have three lines of text, 20 characters per line. Please see the flyer for details about ordering. If you have any questions, feel free to contact Sandy Springer at 908-507-3291 or via email sprfamily@verizon.net. You can order online at www.tbemc.org with a credit card or send in a check to TBEMC, 338 Walnut Ave, Cranford, NJ 07016. Honor a special person, occasion, commemorate your years at TBEMC or celebrate our 101st anniversary.



Commemorate the past.

Celebrate the present.

Inspire the future.

TBEMC HIGH HOLIDAY SCHEDULE 2019/5780

SELICHOT

Saturday, September 21

at Temple Beth Ahm Yisrael in Springfield

Refreshments	8:00 pm
Learning	8:30 pm
Service	10:00 pm

EREV ROSH HASHANA

Sunday, September 29

Mincha-Evening Service	6:15pm
Candle Lighting	6:24 pm

ROSH HASHANAH DAY 1

Monday, September 30

Psukei D'Zimra and Shacharit	8:30 am
Babysitting	10:00 am - 1:00 pm
Family Holiday Service	10:00 am
Jr. Congregation (Ages 8-13)	10:00 am
Shofar Service	11:00 am
Rabbi Kerbel's Sermon	11:15 am
Mincha,Tashlich, Ma'ariv	5:30 pm
Directly at Droescher's Mill	
Candle Lighting	7:24 pm

ROSH HASHANAH DAY 2

Tuesday, October 1

Psukei D'Zimra and Shacharit	8:30 am
Babysitting	10:00 am - 1:00 pm
Family Holiday Service	10:00 am
Jr. Congregation (Ages 8-13)	10:00 am
Shofar Service	11:00 am
Rabbi Kerbel's Sermon	11:15 am
Mincha & Ma'ariv	6:45 pm
Holiday Ends	7:24 pm

EREV YOM KIPPUR

Tuesday, October 8

Mincha	6:00 pm
Yom Tov Candle Lighting	6:10 pm
Kol Nidre	6:15 pm

YOM KIPPUR DAY

Wednesday, October 9

Psukei D'Zimra and Shacharit	8:45 am
Babysitting	10:00 am - 1:00 pm
Family Holiday Service	10:15 am
Jr. Congregation (Ages 8-13)	10:15 am
President's Address	11:15 am
Yizkor Sermon	11:30 am
Mincha	4:30 pm
Ne'ilah-Ma'ariv	6:00 pm
Havdalah & Final Shofar	7:07 pm
Men's Club Break-Fast	7:15 pm



TBEMC SUKKOT SCHEDULE 2019/5780

EREV SUKKOT SUNDAY, OCTOBER 13	RS PIZZA IN THE HUT & SUKKOT DECORATING CANDLELIGHTING MINCHA AND MAARIV	12:00 PM 6:00 PM 6:00 PM
SUKKOT DAY 1 MONDAY, OCTOBER 14	FESTIVAL SERVICES MINCHA & MAARIV CANDLELIGHTING	9:30 AM 6:45 PM 6:58 PM
SUKKOT DAY 2 TUESDAY, OCTOBER 15	FESTIVAL SERVICES MINCHA & MAARIV	9:30 AM 6:45PM
WEDNESDAY, OCTOBER 16	NO EVENTS, NO MINYAN	
SUKKOT DAY 4 THURSDAY, OCTOBER 17	SENIOR MONTHLY GATHERING*	11:00 AM
SUKKOT DAY 5 EREV SHABBAT FRIDAY, OCTOBER 18	CANDLELIGHTING EARLY SHABBAT SERVICES** WE CARE COMMUNITY DINNER*	5:53 PM 6:00PM 6:45 PM
SUKKOT DAY 6 SHABBAT SATURDAY, OCTOBER 19	SHACHARIT SHABBAT ENDS	9:30 AM 6:51 PM
SUKKOT DAY 7 EREV SHEMINI ATZERET SUNDAY, OCTOBER 20	CANDLELIGHTING MINCHA AND MAARIV	5:48 PM 5:50 PM
SHMINI ATZERET & EREV SIMCHAT TORAH DAY 8 MONDAY, OCTOBER 21	FESTIVAL SERVICES WITH YIZKOR MINCHA SIMCHAT TORAH SERVICES CANDLELIGHTING	9:30 AM 6:00 PM 7:00 PM 6:48PM
SIMCHAT TORAH DAY 9 TUESDAY, OCTOBER 22	FESTIVAL SERVICES LUNCHEON FOR KALLAH AND CHATTAN HONOREES MINCHA & MAARIV HOLIDAY ENDS	9:30 AM FOLLOWING SERVICES 6:15 PM 6:47 PM
<p>*WEATHER PERMITTING THESE EVENTS WILL START IN OUR SUKKAH WE CARE COMMUNITY DINNER IS SPONSORED BY GARRY SALOMON. RSVP and pay by MONDAY, OCTOBER 7 THANK YOU, MEN'S CLUB, FOR SETTING UP OUR SUKKAH! ** PLEASE NOTE EARLY TIME FOR SHABBAT SERVICE</p>		

Yahrzeit Announcements



SEPT 28-OCT 4, ELUL 28-TISHREI 5

Lillian Feldman, mother of Clarisse Kant
Francis Loventhal, aunt of Seymour Herbst
Matthew Medlin, father of Phyllis Schilder
Sie Schoss, father-in-law of Sadie Schoss
Anna Weiss, aunt of Bertram Fine
Anna Feldman, mother of Wilbur Feldman
Michael Goldberg, father of Lois Waldman
Tillie Meltzer, mother of Ira Meltzer
Rose Metzger, grandmother of Martin Metzger
Eleanor Bernstein, mother of Bob Bernstein
George Merman, father of Steve Merman
Shirley Riesenber, sister-in-law of Rae Kane
Rose Stein, mother of Philip Stein
Norman Eggert, brother of Joan Eckel
Fannie Roth, grandmother of William Roth
Edith Dare, mother of Sheila Levine
Fanny Rosenbach, mother of Rosalia Metzger
Julius Weinstock, father of Janet Goldberg
Rae Cohen, mother of Marsha Drechsler
Rose Loventhal, cousin of Seymour Herbst
Herman Meltzer, father of Ira Meltzer
Tilford Silver, husband of Joan Silver
Edward Dorfman, father of Carol Brandes
Samuel Kirsch, brother-in-law of Ruth Kirsch
Muriel Wyner, mother of Judith Hecht

OCT 5-11, TISHREI 6-12

David Isenberg, grandfather of Annette Sarrazine
Robert Kaback, father-in-law of Marilyn Kaback
Norman Kirsch, brother-in-law of Ruth Kirsch
Lillian Klarfeld, sister-in-law of Ruth Kirsch
Rose Margulies, mother of Marvin Margulies
Beatrice Rubenstein, mother of Carol Forlander
Ellen Wollenberg, mother of Sandra Springer
Irving Belsky, father of Beverly Scher
Frances Folkart, mother-in-law of Barbara Folkart
Alice Belinsky, mother of Ira Belinsky
Sherman Benus, husband of Kim Benus
Melvin Bleemer, father of Russ Bleemer
Leon Cohen, father of Marsha Drechsler
Irving Feldman, father of Clarisse Kant
Max Gallof, father of Rochelle Schwartz
Phyllis Mayer, wife of Neil Mayer
Joseph Schechter, husband of Stella Schechter
Sigmund Grunwald, father of Miriam Jarney
Herman Klein, father of Robert Klein
Herman Margulies, father of Marvin Margulies
Mary Rosenblum, aunt of Elliott & Joyce Saftlas
Shirley Shapiro, mother of Nancy Lubarsky
Anne Sumka, mother of Marjorie Ganek
Leonard Coffman, father of Rachel Schwartz
Abraham Scheiner, father-in-law of Harriet Scheiner
Irving Gimble, father-in-law of Murray Rose

OCT 12-18, TISHREI 13-19

Mary Dorfman, mother of Carol Brandes
Morris Schwitz, grandfather of Eric Gardiner
Selma Eggert, mother of Joan Eckel
Miriam Slater, sister of Dorene Barnett
Eva Chait, mother-in-law of Claire Chait

Hanna Cohen, aunt of Joanne Friedman
Hannah Cohn, grandmother of Bobbi Binder
Morris Elgarten, father of Harriet Gross
Hilda Ellis, aunt of Martin Metzger
Martha Farenback, mother of Reva Farenback-Brateman
Eduard Philippsborn, husband of Rosalia Metzger
Rose Fuchs, mother of Dr. Ghitta Eibschutz
Bertha Feigelstock, mother of Frieda Balisak
Alfred Lipson, husband of Sylvia Lipson
Sarah Rowitz, mother-in-law of Seymour Herbst
Lawrence Safran, Leonard Waldman

OCT 19-25, TISHREI 20-26

Helene Ershow, mother of Linda Ershow-Levenberg
Gustave Yacker, father of Marc Yacker
Meyer Friedman, father of Hy Friedman
Ben Galen, father of Robert Galen
Henrietta Gardiner, grandmother of Eric Gardiner
Seymour Goldberg, father-in-law of Janet Goldberg
Sidney Levine, brother-in-law of Sheila Levine
Shirley Rosenblatt, mother of Florette Applebaum
Alexander Waldman, father of Leonard Waldman
Betty Cohen, mother of Harold Cohen
Ann Halperin, mother of Howard Halperin
Susan Reitman, wife of Michael Reitman
Joanne Rothstein, mother of Deborah Simons
Sarah Schoen, grandmother of Roberta Kessler
Ella Warren, mother of Sadie Schoss
Ida Feshbach, mother of Florence Nadelman
Joseph Serchuk, father of Iris Weiner
Sarah Drechsler, mother-in-law of Marsha Drechsler
Harry Gopstein, father of Esther Leib
Bernard Berzon, father of Carla Berzon
Max Kahana, father of Donald & Ellen DuBow
Suzanne Eisenberg, sister of Kenneth Eisenberg
Edward Levine, husband of Sheila Levine
Lena Levine, mother-in-law of Sheila Levine

OCT 26-NOV 1, TISHREI 27-CHESHVAN 3

Sonia Beinstein, mother-in-law of Judith Beinstein
Avigdor Schwartz, grandfather of Jeffrey Schwartz
Avigdor Schwartz, grandfather of Leonard Schwartz
Abraham Smolensky, brother of Sara Zeidman
Ruth Stein, mother of Jill Stein
Leonard Einhorn, father of Harry Einhorn
Tina Heller, aunt of Sandra Schachter
Lois Hosid, mother of G. Kyla Grod
Bella Krueger, mother of Jerome Krueger
Phil Rosen, grandfather of Carrie Graifer
Molly Tanenbaum, mother of Eleanor Fishman
Florence Fine, wife of Bertram Fine
Harry Rosenberg, father of Richard Rosenberg
Sylvia Barr, Mother of Sharlene Barr
Herbert Bunis, father of Ruth Kerr
Mark Korman, son of Beverly Korman
Isadore Wortzel, father of Ruth Kirsch
Joseph Marcus, father of Morris Marcus
Solomon Isenberg, uncle of Annette Sarrazine
Marjorie Levine, mother of Gail Stockwell
Nettie Markowitz, mother of Howard Marlowitz

DONATIONS



Yahrzeit Fund

Robert Klein, in loving memory of Herman Klein
 Elliot & Janet Ballen, in loving memory of Rosalind Ballen
 Judith Bernstein, in loving memory of Naomi Shor
 Judith Beinstein, in loving memory of Alex Beinstein
 Harold & Helaine Cohen, in loving memory of Lester Cohen
 Gary & Judy Daniel, in loving memory of Sol Klein
 Alice Goldfarb, in loving memory of Seymour Gerson
 Norman & Marilyn Gross, in loving memory of William Bilow
 Rae Kane, in loving memory of Allan Kane
 Rae Kane, in loving memory of Shirley Riesenbergr
 Barry & Jane Kanig, in loving memory of Lillian Hecht
 Barry & Jane Kanig, in loving memory of Rhea Siegfried
 Clarisse Kant, in loving memory of Lillian Feldman,
 Clarisse Kant, in loving memory of Irving Feldman
 Ruth Kerr, in loving memory of Harbert Bunis
 Ruth Kerr, in loving memory of Selig Bunis
 Frederic & Roberta Kessler, in loving memory of
 Bernice Kessler

Sybil Kramer, in loving memory of Doris Weingus
 Jonas & Linda Leifer, in loving memory of Elsie Leifer
 Libby Lulinski, in loving memory of Ruth Kerbel
 Neil Mayer in loving memory of Rita Mayer
 Marilyn Melcher, in loving memory of Arthur Kasper
 Harold & Marlene Oslick, in loving memory of Stephanie Oslick
 David & Gail Salomon, in loving memory of Ruth Weiss
 Martin & Linda Samolsky, in loving memory of Lester Obolsky &
 Sam Samolsky
 Jack Siegfried, in loving memory of Rhea Siegfried
 Carol Steuer & Herbert Marton, in loving memory of Rose Spector
 Carol Steuer & Herbert Marton, in loving memory of
 Carrie Sue Coddington
 Carol Steuer & Herbert Marton, in loving memory of Gene Kaplan
 Gail Stockwell, in loving memory of Clara Levine
 Gail Stockwell, in loving memory of David Rubinstein
 Sandra Sussman, in loving memory of Stuart Sussman
 Sandra Sussman, in loving memory of Myron Tepper
 David Watter, in loving memory of Bernard Watter
 Neil & Cindy Watter, in loving memory of Bernard Watter

Rabbi's Discretionary Fund

Clarisse Kant, in loving memory of Fred Kant
 Neil Mayer, in loving memory of Ruth Kerbel
 Stephen & Sidney Solomon, in loving memory of Ethel Polsky
 Herbert Martin & Carol Steuer, in loving memory of Ruth Kerbel
 Leonard & Lois Waldman, in loving memory of Doris Weingus

Security Fund

Abbie & Howard Halperin, in loving memory of Gene Kaplan
 Stanley & Chemda Mindy Kipness, in loving memory of Gene Kaplan
 Libby Lulinski, in loving memory of Gene Kaplan
 Harold & Marlene Oslick, in loving memory of Gene Kaplan
 David & Sandy Springer, in loving memory of Gene Kaplan
 Leonard & Lois Waldman, in loving memory of Gene Kaplan

General Fund

In Honor of Carol & Bill Frolander's 50th anniversary
 Charles & Esther Colodner, in loving memory of Robyn Perlman
 Linda Hecklen, in loving memory of Lewis Hecklen
 Frederic & Roberta Kessler, in loving memory of Ruth Kerbel

Sisterhood

Lawrence Posner, in honor of the birth of Dave & Gail Salomon's
 grandson
 Milton & Ernestine Fox, in loving memory of Doris Weingus
 Donald & Renee Herz, in loving memory of Henry Herz
 Harriet Mazur, in loving memory of Faye Pierson
 Lawrence Posner, in loving memory of Harold Posner
 Gail & David Salomon, in loving memory of Ruth Weiss
 David & Sandy Springer, in loving memory of Ellen Wollenberg
 David & Sandy Springer, in loving memory of Stella Springer
 Herbert Martin & Carol Steuer, in loving memory of Ruth Kerbel

Halperin Library & Education Fund

Michele Bernstein in honor of Mr. & Mrs. Stokel's 60th
 Anniversary

**The Temple office can help you decide what
 the best giving opportunity is for you
 908-276-9231 x10 or office@tbemc.org
 Please consider donations to these other
 charitable funds at TBEMC**

**Yahrtzeit Fund
 Rabbi Discretionary Fund
 Stuart Kaback Memorial Fund
 Accessibility Project Fund
 Halperin Library & Education Fund (HLEF)
 Temple Fund
 We Care Fund
 Dora Haleva Fund
 Holocaust Garden fund
 Metzger Memorial Fund
 Youth Education Trust Fund
 Cantor Discretionary Fund
 Simcha Fund
 Doris Bloomfield Fund
 Men's Club Fund
 Religious School Fund
 Shiva Meal Fund
 JNF Tree Fund
 Sisterhood Fund**

**We Gratefully Acknowledge
 These Donations Made to
 Temple Beth-El Mekor Chayim**

Temple
Beth-El Mekor
Chayim
invites you to
join our

Shabbat Shuva

SATURDAY MORNING SERVICES

On this very special Shabbat, joined by the family of our beloved
Lenny Farber, we will dedicate a Torah in his memory

SATURDAY, OCTOBER 5, 2019

9:30 AM

338 WALNUT AVENUE CRANFORD, NJ

office@tbemc.org | 908-276-9321

Shabbat Guest Speaker

**Linda Scherzer, Director of
Community Relations at The Jewish
Federation of Greater MetroWest**

**Topic: "Bearing Witness: The
Humanitarian Crisis on the
Arizona-Mexico Border"**

**Linda will also offer a report from the
GMW Community Relations Agenda**

WWW.TBEMC.ORG





ENTRANCE COST

\$5 PER PERSON OR
\$20 FOR FAMILIES OF
4 OR MORE

PIZZA IN THE HUT!

OCTOBER 13TH AT NOON

FOOD . CRAFTS . TIKUN OLAM . RAFFLE

**JOIN USY, KADIMA AND THE RELIGIOUS
SCHOOL FOR A SOCIAL EVENT!**

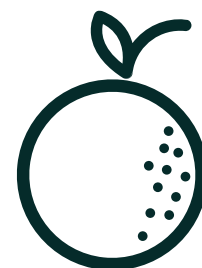
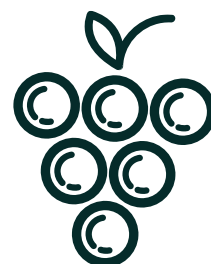
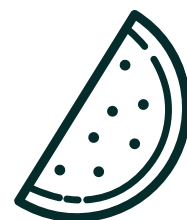
FOOD

- Pizza, Falafel, and Israeli Salad

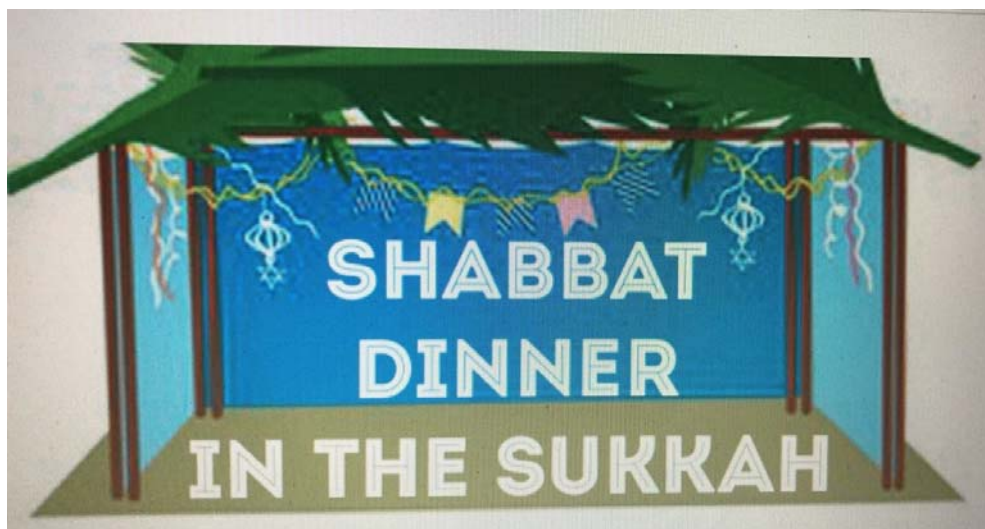
ACTIVITIES

- Sandwich making for the homeless in Newark
- Project Isaiah canned food sorting to be donated to Jewish Family Services
- Sukkah decoration making
- Lunch and Learn with the Rabbi

**BRING CANNED GOODS FOR PROJECT ISAIAH
EACH CAN WILL EARN YOU ONE RAFFLE TICKET!**



YOU ARE CORDIALLY INVITED TO



**WE CARE COMMUNITY SUKKAH DINNER
FRIDAY, OCTOBER 18, 2019 AT TBEMC**

KABBALAT SHABBAT SERVICES AT 6:00PM
DINNER IMMEDIATELY FOLLOWING
(APPROXIMATELY 6:45PM)

ADULTS AND CHILDREN OVER 13 \$18;
UNDER 13, FREE (Must be accompanied by an adult)

RSVP: NO LATER THAN OCT 10, 2019.

DAVID SALOMON--(908) 868-9028
OR EMAIL DSALOMON8648@GMAIL.COM

OR CALL TEMPLE OFFICE, (908) 276-9231

WHAT ARE ESSENTIAL OILS?
WHAT CAN THEY DO FOR *ME*?



HOW DO I GET THEM?
WHAT DO I DO WITH THEM
ONCE I GET THEM?

TO FIND OUT, COME TO TBEMC'S SISTERHOOD
OCTOBER MEETING
THURSDAY*, OCTOBER 24th AT 8:00PM
IN THE SOCIAL HALL

JOIN US FOR A PRESENTATION BY ALLYSON KATZ AND RACHAEL LUKAS

*Note change of meeting day

WHAT HAPPENS IN LAS VEGAS



COMES TO TBEMC'S SENIOR MONTHLY GATHERING IN THE SUKKAH, FEATURING JERRY MOKAR*

Singer and Clarinetist

***THURSDAY, OCTOBER 17th** at 11:00am

* Note change of day

LUNCH WILL BE SERVED IMMEDIATELY FOLLOWING THE PROGRAM
IN THE SUKKAH, WEATHER PERMITTING

\$5 donation suggested for TBEMC members and caregivers

\$10 suggested donation for non-TBEMC members

PLEASE RSVP TEMPLE OFFICE, 908-276-9231

**SISTERHOOD'S FALL
RUMMAGE SALE
SUNDAY, NOVEMBER 3RD 9 AM - 4 PM**

**Clean out your closets!
Clean out your basements!**

Accepting gently used
clothing (no underwear),
household and children's
items, toys, working
electronics, bikes, books,
linens, accessories and
anything else you can
think of

A few things to remember

**Unpack your own things | Shirts & skirts off hangers
No TVs or furniture | Donations from TBEMC members only**

Questions or to volunteer your help

Call Sidney Solomon 908-272-4930

**DROP OFF DATES - 9 AM TO 7 PM
TUESDAY, OCTOBER 29TH | THURSDAY, OCTOBER 31ST**

TEMPLE BETH-EL MEKOR CHAYIM
LIFE LONG LEARNING PRESENTS

Scholar-in-Residence

FIRST SESSION

JEWS ON THE MOVE: HOW MIGRATIONS HAVE REMADE AMERICAN JEWISH LIFE

The history of the United States is the history of immigration, and so too the history of American Jews is an immigrant saga about rapid adaptation to America. It is a remarkable success story, which continues in our own time.

Jack Wertheimer is professor of American Jewish History at the Jewish Theological Seminary. He writes about Jewish religious, communal and educational developments since the middle of the 20th century. His most recent book, "The New American Judaism: How Jews Practice Their Religion Today" (2018). He recently completed two reports on the current state of Jewish philanthropy. One is about shifts in giving patterns, and the second is about how grantees perceive working with big funders.



featuring
Professor Jack Wertheimer

12:30 PM Luncheon & Book Signing

SECOND SESSION

THE GOOD NEWS ABOUT AMERICAN JUDAISM

It's no secret that Jewish religious life is challenged. Less well known are the creative responses of synagogues and other kinds of settings for religious gathering to those challenges. What are they doing differently and whom are they attracting?

SUNDAY NOV
10TH
9:30 AM to
1:00 PM

TBEMC

338 Walnut Avenue
Cranford, NJ 07016
908-276-9231

office@tbemc.org

REGISTER BY 11/6/19

\$18 PER PERSON
REGISTER AT

<https://tbemc.shulcloud.com/>

DO WE STILL LOVE THEM?



YEAH, YEAH, YEAH...WE SURE DO!!!

JOIN TBEMC'S SISTERHOOD AND MEN'S CLUB
FOR OUR ANNUAL JOINT BRUNCH

SUNDAY, NOVEMBER 17TH

BRUNCH AT 9:15am; PROGRAM IMMEDIATELY FOLLOWS

PLEASE RSVP BY TUESDAY, NOV. 12th TO
SIDNEY SOLOMON, (908) 272-4930

"FROM LIVERPOOL TO ABBEY ROAD"

Vincent Bruno, Beatles scholar and Sixties Rock Historian, will talk
about their lives, music and legacy for both the casual listener and the
hard core Beatles fan



When it comes to Israel it often is.

HonestReporting defends Israel from media bias by exposing inaccuracy, misinformation, and other breaches of journalistic standards in its coverage of the Arab-Israeli conflict. HR's managing editor, Simon Plosker, will discuss **how the media gets it wrong**, **why it happens**, **when anti-Semitism is involved** and **how you can take action** that gets results.



Simon Plosker
MANAGING EDITOR
HonestReporting

Wednesday, November 20th 7:30PM

Temple Beth-El Mekor Chayim

338 Walnut Avenue, Cranford NJ 07016

Open to the public, \$5 suggested donation, light refreshments.

PRESENTED BY:



Central New Jersey

Questions and additional information: conradwho@gmail.com
or Conrad at 908-531-8228

SAVE THE DATE
TBEMC PRESENTS

TRIVIA? NIGHT!

Saturday

February 29, 2020

DOORS OPEN AT 7:30 PM | TRIVIA BEGINS AT 8:30 PM

EAT DRINK & TEASE YOUR BRAIN!

PRIZES RAFFLES

TRICKY TRAY | SILENT AUCTION

**TEAMS OF 8 PLAYERS
WATCH FOR REGISTRATION DETAILS
TABLES FILL UP FAST!**

TEMPLE BETH-EL MEKOR CHAYIM

**338 WALNUT AVENUE, CRANFORD, NJ
908-276-9231 | OFFICE@TBEMC.ORG**

CRANFORD USY INVITES YOU TO

BOARD GAME NIGHT

November 3, 2019 • 7:00 PM

at TBEMC

RSVP TO ELLIE AT
TBEMCYOUTHGROUPS@GMAIL.COM

LET THE GAMES BEGIN!

Join us for a fun afternoon with your
Jewish friends in grades 5-7 playing
video games.

November 17th 2019
4:00 PM at Yestercades
in Westfield, NJ



TEMPLE BETH-EL
MEKOR CHAYIM

INSTALLATION of Rabbi Paul Kerbel 2019

FURTHER DETAILS TO FOLLOW

DECEMBER EIGHTH
AT TWO O'CLOCK PM

338 WALNUT AVENUE,
CRANFORD, NJ

908-276-9231 | office@tbemc.org

SAVE THE DATE

Community Inclusion Weekend

Join the TBEMC journey and learn how we welcome all people to our Jewish home. Presentations and programs all weekend long. Kiddush, oneg, dinners and more! Details to follow shortly.

Featuring renowned author, speaker and Jewish inclusion innovation expert Shelly Christensen

February 7-9, 2020

Temple Beth-El Mekor Chayim

338 Walnut Avenue, Cranford NJ

908-276-9231

office@tbemc.org | www.tbemc.org

All are welcome and invited. Members and non-members.

This program is made possible in part by support from the Jewish Federation of Greater MetroWest of NJ's, Greater MetroWest ABLE, the Gary Aidekman Family Foundation, and the Sylvia and Seymour Rubenstein Special Needs Endowment Fund

TBEMC ADVANCE COMMITMENT

SPNSORSHIP OPPORTUNITIES

A SUPPLEMENTAL PATHWAY OF GIVING

DESCRIPTION AND CONCEPT

TBEMC is a really active place with many recurrent activities that we provide every year. While our Sustaining Pledge Model is the major means by which we support our operations, our experience here at TBEMC is that people enjoy sponsoring specific projects or purchasing specific items as a member.

This program gives you the opportunity to do both. It enables the congregation to plan in advance.

RECOGNITION AND PUBLICITY

The person who sponsors the event will be recognized in the programs or publicity related to the event.

HOW TO PARTICIPATE

Below is the form that needs to be filled out, signed and returned to the temple office. Members, their families and their businesses can be sponsors. For each sponsorship opportunity, payment in full now is needed for events occurring in September & October. After October payments are due to the office no later than 60 days prior to the event. We are asking for credit card authorization as a back-up if payment in full isn't received in time to enable the event to go forward as planned. If the sponsorship is for a non-event the payment is due in full.

FIRST COME, FIRST SERVED

If more than one person sends in a request to be the sponsor, the first person whose form is received will be given that opportunity and we will call the subsequent donor.

ONE YEAR AT A TIME

Each year is a new year, and one year's commitment doesn't obligate somebody to do it again.

CO-SPONSORING

You can be a co-sponsor if you line up the other co-sponsor(s) to cover the full cost, and they also submit their forms.

EVENT PLANNING

A Sponsor/Donor who is a TBEMC Member can be involved as a committee member with the event planning .

**QUESTIONS? Linda Ershow-Levenberg 908-351-9310 or
908-507-2366 - Linda.Ershow.Levenberg@gmail.com**

TBEMC ADVANCE COMMITMENT

SPONSORSHIP OPPORTUNITIES

	Sponsorship	Cost
	Library Acquisitions	
1	Library Acquisitions (12 Mo-Rqrd)	\$25 a month
	Flowers	
2	Bima Flowers for special Events	\$300 each
3	High Holiday Bima Flowers	\$500
	New Member Events	
4	Wine and Cheese reception	\$350
5	Bagels & Babies	\$100
6	Friday Night New Member Kabbalat Shabbat	\$350 Each
	Children Religious School	
7	Rosh Hashanah Shofar Workshop	\$350
8	RH and YK Family and Youth Programs	\$300 each
9	Lulavi Etrog sets(3) for Religious School	\$180 each
10	Sukkot chol ha'moed events	\$250 each
11	Hanukkah Religious School Party	\$500
12	Pesach model Seder	\$500
13	Pesach Matzah Making Workshop	\$180
14	Siddur Ceremony Refreshments	\$360
15	Teddy Bear Sleepover	\$100
16	Patron of our special needs students	\$1000 each
17	Sponsor a Students Tuition	\$885
18	Religious School Leadership Development - 4 staff	\$1000 each
19	Supporting teen teaching Madrichim (6 teaching assistants)	\$500 Each
	Full Congregation Events	
20	Kabbalat Shabbat newly installed Board	\$180
21	High Holiday Baby Sitting	\$300
22	Yizkor Book Printing	\$500
23	Erev Simchat Torah refreshments	
24	Simchat Torah Lunch (taken)	\$675
25	Sukkot chol ha'moed events for adults	\$750
26	TuB'shevat Seder	\$360
27	Erev Purim Snacks, graggers and supplies	\$250
28	Purim Carnival	\$500
29	Second Night Seder	\$575
30	Shavuot Cheesecake /refreshments	\$225
31	Senior monthly gathering (taken)	\$1,500

32	Sponsor a Shabbat Dinner	\$750 each
33	Sponsor a Tot Shabbat with dinner	\$750
34	Friday Oneg	\$180 each
35	Saturday Kiddush	\$360 each
36	TBEMC has been invited to be a "Signature Synagogue" of The Anti-Defamation League a lead synagogue in teaching about and engaging in education about anti-Semitism	\$500
37	Sponsor Rabbi Kerbel's two summer lunch and learns	\$500 each
	Office & Administration	
38	Computer	\$1,500
39	Adobe Creative Cloud	\$624/year
40	Constant Contact Email marketing	\$500
41	Website expenses (12 Month-Required)	\$30/month
42	Postage - Yahrzeit letters (12 Mo-Rqrd)	\$25/month
43	Floor Polisher	\$950
44	Advertising: Newspaper, online and direct mail advertising. 12 month-Rqrd)	\$50/month
	Ritual Needs	
45	20 copies new Rabbinical Assembly Pirkei Avot Lev Shalem for chapel for study and adult learning	\$550
46	20 Copies of new Rabbinical Assembly Mahzor Lev Shalem for chapel for study and adult learning	\$550
	Rabbi's Office	
47	Dedicate the Rabbi's office Furniture and accessories by contacting Rabbi Paul Kerbel individually. -Computer, Desk Lamp, Standing light, Desk with side hutch and table, computer table with shelves and drawers, 3 Large bookshelves 6 shelves wide,	Discuss with Rabbi
	Tzedakah Opportunities	
48	Purchase gift cards for ShopRite from the temple, for the Rabbi to give to families in need of food.	purchase in increments of \$50 and \$100

TBEMC ADVANCE COMMITMENT

SPNSORSHIP OPPORTUNITIES

A SUPPLEMENTAL PATHWAY OF GIVING

Name _____

Address _____

Phones _____ Email: _____

Credit Card Type: _____ Expiration Date: _____

Account # _____ Security Code: _____

I will sponsor the following event/project/program(s) per the attached Please include sponsorship number from the list below.

Sponsorship number #	Sponsorship Description	Amount Sponsoring
_____	_____	_____
_____	_____	_____
_____	_____	_____

I will provide payment 60 days prior to the event in question. All event sponsorships in September and October are due now. I understand that if my payment is not received by the temple office by the due date, my credit card will be charged, and I authorize the temple to do so.

Signature: _____ date signed: _____

**QUESTIONS? Linda Ershow-Levenberg 908-351-9310 or
908-507-2366 - Linda.Ershow.Levenberg@gmail.com**

SOMETIMES WE ALL NEED A LITTLE HELP



**TBEMC CAN PROVIDE MEDICAL EQUIPMENT
TO TEMPLE MEMBERS ON A PERMANENT
OR TEMPORARY BASIS**

FREE OF CHARGE

**CONTACT THE TEMPLE OFFICE
(908) 276-9231**

**A WE CARE REPRESENTATIVE WILL
CONTACT YOU DIRECTLY**

TBEMC Wall of Community



New tiles are going up on our community wall:

In memory of Millie Lewis, Brenda Klein, Lewis & Martha Heicklen, Ted Spitz, Simon & Irene Holtz Raicer (parents of Abbie Halperin), Ann & Samuel Halperin (parents of Howard Halperin)

To commemorate the Davidson family & the Bar/Bat Mitzvahs of Cole & Chase Turnof, Micah Berger, Amelia Bluman (granddaughter of Jonas & Linda Leifer)

To celebrate the marriage of Mitchell & Marina Merman and the birth of Steve & Tammy Merman's grandson

Why don't you join them and other congregants?
Become a part of this ongoing project; add to the wonderful menorah sculpture on our building. Watch it grow!

Commemorate the past. Celebrate the present. Inspire the future.

Join Temple Beth El Mekor Chayim's permanent tribute to those who have been a part of our community. Commemorative wall tiles, engraved with an inscription of your choosing, will honor your loved ones, family, friends, and celebrate important events in your life. Add to the inspiring tiles that have placed on the exterior wall entering the front of the building for all to see. Each permanent tile is only \$180. Each tile can have three lines of text, 20 characters in each line. Order forms are available.

If you are interested in reserving your commemorative tile online with a credit card, go to www.TBEMC.com and look for information about the commemorative tiles or mail in your check with the wording you want inscribed.

More information or questions: Sandy Springer, 908-507-3291 or sprfamily@verizon.net
Samples of some tiles already installed are below.





Birthday, anniversary, baby, new job, retirement, good news, good health, good luck, goodbye....the reasons are infinite.

The best reason...support Sisterhood.

Sisterhood provides the Oneg and Kiddush each week it is not sponsored. We financially support the religious school, library, USY and Kadima youth groups, joyfully present B'nai Mitzvah gifts, and donate to synagogue projects.

The Sisterhood Saturday Kiddush is prepared for the congregants attending services, approximately 30-40 attendees each week. Share your simcha with your temple community and pick a date to underwrite the cost of a kiddush.

**The cost is 10 times Chai, \$180.00.
Call Laurie in the TBEMC office at 908-276-9231
and let her know the date you are looking for
and what you want inscribed on your special cake.**



EARN MONEY FOR **TBEMC** WHILE YOU FOOD SHOP!

Everything you ever wanted to know about raising money for the Temple
by shopping with vouchers (scrip).

What is it?

The TBEMC Sisterhood's Voucher program sells gift cards (scrip) for ShopRite.

How does it work?

Shoprite has agreed to sell the gift cards to Sisterhood at a discount. You buy the cards at face value, and the synagogue keeps the difference. You get to participate in an important fundraiser, and it costs you absolutely nothing extra! You can use these convenient gift cards for your regular shopping or to give as gifts!

How can you participate?

We make it easy! Vouchers are available* in the Temple office, during any Sisterhood meeting or event, Board of Trustees meetings, or by contacting the Temple office, Sandy Springer (908-507-3291), or the chairperson, Linda Flaxman (908-276-9086), or linda@flaxman.com. We can make them available during Religious School hours, too, if there is an interest.

*Must be paid for at time of purchase

What else do you need to know?

Sisterhood donates all of the profits earned from the sale of vouchers back to TBEMC – to the Religious School, USYers, and special programs. Also, Sisterhood members earn 5% of their purchase price in donor credit, which goes toward their cost of attending the Donor Celebration in June.

More Questions?

Contact Linda Flaxman at 908-276-9086 or linda@flaxman.com. She will answer any other questions.





WE GRATEFULLY ACKNOWLEDGE THE MEMBERS OF THE TBEMC LEGACY CIRCLE

Jaclyn Baranoff	Jerald Baranoff	Allen Barkin
Julie Roffé Barkin	Carol Blank	Bernice Bedrick*
Spencer Brooks	Laura Cohen	Aaron Cohen
Charles Colodner	Gary Daniel	Judith M. Daniel
Susan Burde Eisenberg	Kenneth S. Eisenberg	Linda Ershow-Levenberg
David Levenberg	Heidi Farber	Leonard Farber*
Bertram Fine	Joan Finkelstein	Alice Gerson Goldfarb
Gary Goodman	Marvin Greenberg	Abbie Raicer Halperin
Howard Halperin	Lance Kandl	Phyllis Kandl
Fred Kant*	Clarisse Kant	Mark Kaplan
Deborah Kaplan	Frederic Kessler	Roberta Kessler
Sam Kimmelman	Jerome Krueger	Charles Leavitt
Sheila Levine	Mildred Lewis*	Nancy Lubarsky
Robert Meth/Estate of Meth	Martin Metzger	Rosi Metzger
Harold Oslick	Marlene Oslick	Lawrence H. Posner
Irwin & Thelma Rappaport	Rosalind Reiss	Adam Reissman
Rebecca Reissman	Roberta Rich	Laura Rubin
David Salomon	H. Gail Salomon	Rochelle Schwartz
David Schwartz	Alan Schwartz	Donald Shapiro
Charles Sporn	Trudy Springer*	Sandra Springer
David Springer	Myra Stein	Phillip Stein
Laurie Steinbach	Stephen Steinbach	Lois Rabbino Waldman
Len Waldman	Joy Weinstock	Michael Weinstock
Patricia Werschulz	Arthur Werschulz	

Each of these people has made a future gift to assure the survival of TBEMC. Thank you so much to each Legacy Circle member for caring and committing! You too can join the Legacy Circle by reaching out to David Springer at 908-370-1890 or Laura Cohen at 908-389-1744. *Of blessed memory



I/We have **also** made provisions, **and will complete a separate form**, for a legacy gift to the following community partner organization(s):

- ☐ Adath Shalom
- ☐ Bnai Keshet
- ☐ Congregation Agudath Israel
- ☐ Congregation Beth Israel, Scotch Pl
- ☐ Congregation B'nai Israel, Millburn
- ☐ Congregation Ohr Shalom-Summit JCC
- ☐ JCC of Central NJ
- ☐ Jewish Family Service, Central
- ☐ Jewish Family Service, MetroWest
- ☐ Jewish Service for the Developmentally Disabled
- ☐ Morristown Jewish Center Beit Yisrael
- ☐ Mt. Freedom Jewish Center
- ☐ Oheb Shalom Congregation
- ☐ Temple Beth Ahm Yisrael
- ☐ Temple Beth O'r Beth Torah
- ☐ Temple Beth Shalom
- ☐ Temple Beth-El Mekor Chayim
- ☐ Temple B'nai Or
- ☐ Temple Emanu-El, Westfield
- ☐ Temple Sinai, Summit
- ☐ YM-YWHA of Union County
- ☐ Other _____

Please return this form to the organization(s) you designated or to:

Karen Secular, Program Manager
Jewish Community Foundation
901 Rt. 10, Whippany, NJ 07981
973-929-2918
ksecular@jfedgmw.org

Thank you for taking this beautiful step to secure a strong Jewish future.

Confirmation of Commitment

I/we _____ have made provisions for a legacy gift to _____.

My/Our gift is in the approximate amount of \$ _____, **OR** _____ % of my/our estate or plan, and was completed through (check a box, please):

- | | |
|---|---|
| <input type="checkbox"/> Bequest/Will | <input type="checkbox"/> Life Insurance |
| <input type="checkbox"/> Retirement Plan Assets (e.g., 401(k), IRA) | <input type="checkbox"/> Charitable Remainder Trust |
| <input type="checkbox"/> Estate or Business Interest | <input type="checkbox"/> Other _____ |

(Please Print Clearly or Type)

Donor Name _____ Date of Birth _____

Donor Name _____ Date of Birth _____

Name(s) as you wish them to appear for formal recognition (without titles) _____

Street Address _____

City, State, Zip _____

The BEST phone number(s) to reach you. Please indicate cell or home. _____

Email Address or Addresses _____

Please check all that apply:

- ☐ You have permission to **recognize me/us publicly** (without gift type or amount)
- ☐ I/We would like our gift to remain **anonymous** at this time.
- ☐ I/We understand that you will inform the **designated organizations** of this gift.
- ☐ Please have a Jewish Community Foundation staff member contact me for a confidential conversation regarding my legacy gift.

I/We understand that this commitment is revocable and may be modified at my/our discretion. I/We will endeavor to notify the recipient organization(s) accordingly.

Donor Signature _____ Date _____

Donor Signature _____ Date _____

Recipient Organization Representative Signature _____ Date _____





**BRAVO
PRINT & MAIL**

Pat Conway

T: 201.806.3750
F: 201.806.3760

pat@bravonyc.com
491A Washington Ave.
Carlstadt, NJ 07072

Thank you to Bravo Print & Mail for doing a Mitzvah for TBEMC

Jewish Hospice Care



- Excellent Nurse to Patient Ratio
- Home Health Aide Support for Family
- Bereavement Support Monthly Meeting
- Complementary Chicken Soup plus Harp and Massage therapies

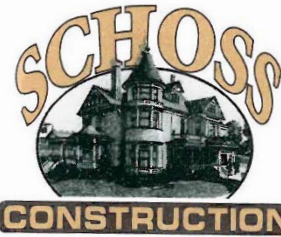


STEIN HOSPICE
at The Oscar and Ella Wiff Campus for Senior Living

**49 Veronica Ave., Suite 206
Somerset, NJ 08873
(732) 227-1212
www.SteinHospiceNJ.org**

Serving Union, Middlesex,
Somerset and Monmouth Counties

*Accredited by the National Institute
for Jewish Hospice*



Ethan Schoss
P.O. Box 969
Scotch Plains, NJ 07076

Office: 908-889-9042
Fax: 908-822-8840
www.schossconstruction.com

BRIAN T. DENNY

PH. 908-276-8062
ARNOLDSPESTCONTROL@GMAIL.COM

ARNOLD'S PEST CONTROL, INC.

COMPLETE TERMITE & PEST CONTROL SERVICE



INTEGRATED PEST MANAGEMENT
WWW.ARNOLDSPESTCONTROL.COM



INDUSTRIAL
COMMERCIAL
RESIDENTIAL

9 QUINE STREET
CRANFORD, NJ 07016

SCHWARTZ BARKIN & MITCHELL

Attorneys at Law

1110 Springfield Road
Union, New Jersey 07083-1339
(908) 688-1644 FAX (908) 688-9530
www.sbmcsq.com
sbarkin@sbmcsq.com

Commercial • Real Estate • Family • Collections
Estate Planning • Employment • Education
Appellate • Municipal Court • Land Use • Litigation

**HOWARD SCHWARTZ
ALLEN J. BARKIN
GAIL J. MITCHELL
ALDAN O. MARKSON
DAVID WENDEL**



Residential and Commercial Service
Scotch Plains, NJ • 908-222-1566
grandsanitation.com

INVESTMENT/MANAGEMENT
DIVISIONS

(908) 686-1800
Fax (908) 686-1839



MITCHELL KRAMER



BROUNELL



KRAMER REALTORS

1435 MORRIS AVENUE, UNION NEW JERSEY 07083

FINK ROSNER ERSHOW- LEVENBERG, LLC

ATTORNEYS AT LAW

60 WALNUT AVENUE • SUITE 202 • CLARK, NJ 07066
(732) 382-6070

WWW.FINKROSNERERSHOW-LEVENBERG.COM

FOLLOW OUR ELDER LAW BLOG POSTS AT:

WWW.LEGALNEWSYOUCANUSE.COM

ELDER & DISABILITY LAW

◆ WILLS, TRUSTS &
GUARDIANSHIPS

◆ MEDICAID
PLANNING,
APPLICATIONS &
APPEALS

◆ SPECIAL NEEDS
PLANNING

◆ PROBATE & ESTATE
ADMINISTRATION

PLANNING
PRESERVING
PROTECTING...

Your Life's Most
Valuable Assets

Certified Elder Law Attorneys,
Certified by the National Elder Law
Foundation, an ABA approved
organization approved by the N
Supreme Court

Just 2 minutes from GSP Exit 135



EUROPEAN  WAX CENTER®

THE ULTIMATE WAX EXPERIENCE

FREE[®]

BODY WAX

FOR FIRST TIME GUEST

520 North Ave. in Garwood
(Across from ShopRite, next to Massage Envy)
908.789.1515 or www.waxcenter.com

The Weisman Family

*Call for details
OPEN 7 DAYS

Like us on Facebook!



If you are a member of Facebook, you can help TBEMC by sharing our news, stories and promotions about social and fund raising events.

You can simply hit the "SHARE" button to share all that we do with your family and friends who may be interested in some of the things that we do at TBEMC.

We have two Facebook pages, one for the general synagogue and one for religious school. If you haven't already, please like both pages. The links are below. Then you can easily hit the "SHARE" button each time exciting news and events appear on your page!

TBEMC MAIN TEMPLE LINK

<https://www.facebook.com/TBEMC/>

RELIGIOUS SCHOOL LINK

<https://www.facebook.com/Temple-Beth-El-Mekor-Chayim-Religious-School-185439761483723/>

Office Hours By Appointment



DANIEL T. GINTER, D.M.D.
Oral and Maxillofacial Surgery
Specialty Permit #2890

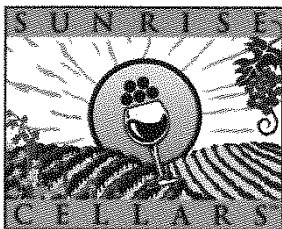
34 Forest Avenue
Cranford, New Jersey 07016-2412
Telephone: (908) 272-3950
Fax: (908) 709-3710

**BERNHEIM APTER
REITZMAN**
Suburban Funeral Chapel

68 Old Short Hills Road • Livingston, NJ 07039
(973) 422-0600 • Fax (973) 422-0606
(800) 938-6372



LICENSED MANAGER: LOUIS J. URBAN NJ LIC. NO. 3537
RICHARD M. SCHUELE NJ LIC. NO. 4043



ShopRite
Wines and Spirits
of Westfield

Ken Kimble
Store Manager
908-232-8700 phone
908-232-8099 fax

333 South Avenue East, Westfield, NJ 07090
ken.kimble@sunrisecellars.com

(732) 574-2040

DELI KING CLARK

Restaurant/Catering/Delicatessen

30 Clarkton Drive
Clark, New Jersey 07006
(Located in the Clarkton Shopping Center)

Beckerman & Company

Professional Insurance Managers

**We represent over 25 insurance Carriers offering competitive choice
for all your Business & Personal Insurance Needs!**

www.beckermanco.com

430 Lake Avenue
(732) 499-9200

Colonia, NJ 07067
Fax (732) 499-9050