



June 2019
Iyyar – Sivan 5778

TEMPLE BETH EL MEKOR CHAYIM

Contents

President's Report	1
Bima	2
We Care	2
Classes	3
Religious School	3
Underwrite.....	3
CJL	4
Communications	4
Library	4
Graduations	5
Federation.....	6
Sustaining Pledge.....	6
Sisterhood	7
Classes.....	8
Wall of Community	8
Torah Fund.....	8
Fundraising.....	9
Community.....	9
Minyan	10
Yahrzeit.....	11
Donations.....	12

Temple Beth-El Mekor Chayim
338 Walnut Avenue Cranford, NJ 07016
(908) 276-9231 www.tbemc.org

Rabbis Neil Tow and Rachel Schwartz
Religious School Principal: Michael Herman
Temple Administrator Laurie Lindner
President Jackie Baranoff
First Vice-President Fred Kessler
Second Vice-President Tammy Merman
Third Vice-President Mark Kaplan
Treasurer Mindy Kipness
Financial Secretary Alan Schwartz
Corresponding Secretary Becca Reissman

Editors: Debbie Abrams Kaplan and
Devorah Wolf

Thanks: Art Werschulz, Howard Epstein
To Submit Articles or Letters to the Editor:
bulletin@tbemc.org

President's Report Annual Report 2019

Jackie Baranoff

Reflecting on this past year at TBEMC, the word that comes to my mind is resilience. For more than 100 years, our community has overcome the many challenges thrown in its path. This past year shows yet again we are strong, resilient and continue to thrive. First, I want to welcome Rabbi Paul Kerbel who will serve as our rabbi beginning on July 1st.

I am proud of our Board of Trustees and the work we have done, especially those decisions that were quite difficult. Our officers and trustees always have considered what's best for TBEMC. As you can see by the slate this year, there will be many new faces that will become a part of the governance of TBEMC. I wish Mark, his officers and trustees all good things in the coming year.

It's now been one year since implementing our Sustaining Pledge Model. Many people have given from their hearts and we hope they will continue to do so again in this fast-approaching fiscal year.

Here at TBEMC we are so blessed to have many people to help keep our shul a well-oiled machine and I will take a moment to thank them:

Phil Stein and Art Werschulz – your dedication is immeasurable to TBEMC every day, not just on the holidays.

Thanks to Fred Kessler and Mindy Kipness, our finance gurus. You walked into a mine field, were able to survive, and are sending us on a path forward.

Dave and Gail Salomon – our WE CARE ambassadors. They coordinate meal preparation, deliveries, and of course the Senior Monthly Gatherings which draw consistently large crowds. WE CARE was helping out in the kitchen two Shabbats ago, and I was privileged to don an apron and gloves and help. It was an honor.

Laura Cohen – assigning all our Torah and Haftorah readers, and of course Torah with Laura on Sunday mornings, and Legacy.

Dave Springer – Legacy and Etz Chayim Chair. Dave is still hard at work securing 75 Legacy commitments to ensure another 100 years of TBEMC.

(continued on next page)

(continued from previous page)

Sandy Springer for helping to keep the office functioning during a difficult time, and for helping us find Laurie.

Marty Metzger and Harold Oslick – our House/Security chairs. I am hopeful the Homeland Security grant comes through.

Ellie Barkin – Our Youth leader.

Abbie Halperin – for your guidance and keeping our library well stocked.

Thanks to the ladies of the Platter Patrol. Carol Blank, Joanie Finkelstein and their team provide us with lovely Kiddushes each week sponsored by our Sisterhood.

Sisterhood & Men's Club – thanks for your unwavering support.

Patty Werschulz – giving me advice when I ask for it and sometimes when I don't.

Thanks to the best Executive Board: Fred Kessler, Elliot Ballen, Mark Kaplan, Becca Reissman, Alan Schwartz, Tammy Merman and Mindy Kipness, and special thanks to Jerry Baranoff for all your hard work.

This year we desperately needed a fundraiser, so I asked our Membership chairs Tammy Merman and Becca Reissman to come up with an event. Not only was Trivia Night great fun, they made some money as well. Bravo!

Joe Bloomfield – the best bartender and office volunteer and all around Mr. Goodbar.

Debbie Kaplan and Devorah Wolf – for our monthly Bulletin.

Our custodians – Pedro, who will be retiring next month, and Wallace

The largest thank you goes to my family. Thank you for putting up with the many nights of meetings and eating out. I love you all.

In just a few short weeks on June 7th I will happily pass the baton to Mark Kaplan. I have no doubt that he will do an outstanding job as president of TBEMC. Just remember, when you have a critique, please feel free to address your concerns to Mark. Please join us for installation on Friday, June 7th at 7 pm.

Bima Accessibility

Thank you to ALL who have sponsored a part of this project.

All donors will be recognized in a prominent display.

There are still many opportunities for sponsors and we encourage chair sponsorships.

Stair Railings (4)	\$7,200
Lift Railings	\$3,600
Stair Railing (Individual)	\$1,800
Congregational Seating Row	\$1,800
Clergy and Bima Chair	\$1,080
Ark Sheer Curtains	\$360
Individual Congregational Seat	\$180
General Support	any

Thanks to all who support our accessible sanctuary project! *Laura Cohen*

WE CARE



During the May Senior Monthly Gathering, Superintendent of Schools, Dr. Scott Rubin (left), spoke about reimagining Cranford Schools. We presented him with a TBEMC WE CARE hat.

After a very successful first year, the WE CARE committee looks forward to continuing to provide support through doing deeds of loving kindness for our TBEMC community. Many thanks to all those that have volunteered this past year in the many areas that WE CARE provides services to our community.

Volunteer opportunities are available in the following areas:

The We Care committee is looking for a volunteer to send out preprinted monthly birthday cards to our congregants. Meal prepping and delivery for those in need, Homework Club Tuesdays 3-4 pm at TBEMC, Shiva meals, providing transportation, helping with senior monthly gatherings, medical apparatus lending library, mailings and correspondence, monthly birthday cards and get well cards, making telephone calls, home visitations, hospitals and nursing home visitation and food bank collections.

We welcome all wishing to volunteer. Any amount of time is appreciated no matter your age or availability. Dave Salomon, 908-868-9028, dsalomon8648@gmail.com

RITUAL

Even when it's not a holiday, come and be counted! Evening minyan is Mondays, Tuesdays and Thursdays at 7:30. Please see the online calendar for the minyan schedules for holidays and regular days. You can find the daily minyan list at: <http://tbemc.org/religious-life/minyan-list/>



TBEMC Youth

Hello TBEMC Members,

If you have not yet signed up with our local USY or Kadima chapter please make sure to do so using the link below. Also, please help spread the word that 5th graders are able to attend Kadima for free this year. You can find the monthly Kadima and USY newsletter here:

<https://www.smores.com/08jx5>

ENCAMPMENT Now is the time to sign up for Kadima and USY Encampment. Join teens from across Mizrah (Eastern PA, Southern New Jersey and Delaware) and Hagalil (Northern New Jersey) for an amazing week of incredible Camp activities and memories!

When? August 19-26

What can you expect? Everything you do at camp packed into an amazing week! Everything from arts and crafts, sports, color wars, along with traditional USY/Kadima programming where we learn about important social action projects and Israel!

Cost Take advantage of our early bird rate of \$549 until Jun 6. After that the price will go up to \$569 and applications close Aug 1! Cost of convention includes all program fees, camp fees, food and transportation from centralized locations. Talk to Ellie about temple scholarships through Etz Chayim.

More information on encampment:

<http://bit.ly/30Ju6fW>

We look forward to seeing you there at Perlman Camp this summer!

USY (grades 9-12)

Laser Tag TBA

Join us at Branchburg Sports Complex for a little battle royal. All 8th graders are welcome at this event.

Membership forms: <http://bit.ly/2MZqZZV>
Ellie Barkin, USY/Kadima Advisor,
barkin.ellie@gmail.com

MEN'S CLUB

Join Men's Club for the Raffle Dinner and BINGO on June 13 at 6:30 pm. They'll serve an Italian food dinner, with garlic bread and drinks. Cost is \$14 per person, and children 12 years and under are FREE. Reservations and payment are due by June 10. Make check payable to TBEMC Men's Club. RSVP to the office:
office@tbemc.org or call 908-276-9231.

Religious School News

TBEMC Religious School Provides Education for All Age Groups

The TBEMC Religious School fosters love for G-d, prayer, Torah, and community. We offer a range of Jewish education for the entire family.

Religious School is Sundays from 9-12 for all grades, and Tuesdays from 4-6 for 3rd-7th grades. When students reach Bar/Bat Mitzvah, they will have learned skills in Hebrew reading, prayer and understanding of Jewish holidays.

Students begin in kindergarten through 2nd grade with hands-on learning that includes holidays and Hebrew letters. Temple membership is not required until 3rd grade. With our new Sustaining Pledge Model, more young families are joining an earlier time, because we have a more flexible donation model without a set dues amount.

The Gan Katan class held bi-weekly for ages 3-4, is filled with joy through art, music, storytelling, dancing and friendship. Temple membership is not required for this program, which begins the foundation of Jewish life for each child.

Tot Shabbat for children 0-6 years is held monthly and helps light a spark that connects children to Judaism at a young age. We develop the habit and joy of praying with the community. Temple members and non-members are warmly welcomed.

Parents are encouraged to enhance their Jewish education through Shabbat Junior Congregation and Sunday morning prayer service.

We welcome you to register throughout the year for Gan Katan through 7th grade classes. Any time you decide to register is the right time! We recognize that there are traditional and non-traditional family units with unique spiritual needs. It is our goal to open our doors to all who seek a congregation such as TBEMC.

Contact the office for more information.

Underwrite

**Verb: [uahn-der-rahyt, uhn-der-rahyt]
to show agreement with or to support to bind
oneself to contribute a sum of money
(to an undertaking)**

Birthday, anniversary, baby, new job, retirement, good news, good health, good luck, goodbye...the reasons are infinite. The best reason? To support Sisterhood.

Sisterhood provides the Oneg and Kiddush each week it is not sponsored. We financially support the Religious School, library, USY and Kadima youth groups. We joyfully present B'nai Mitzvah gifts and donate to synagogue projects.

The Sisterhood Saturday Kiddush is prepared for the congregants attending services, approximately 30-40 attendees each week. The cost is 10 times Chai, \$180. Please pick a date and let us know what to write on your special cake. We appreciate your support!



As we wind down our fifth year of the Create a Jewish Legacy program, new participants have been harder to come by, but we never stop trying. This past month we welcomed Laurie and Stephen Steinbach and Martin and Rosi Metzger to our Legacy Circle, bringing its membership up to 75 people. We thank all of them for their long time membership and involvement with so many things here at TBEMC. It is an honor to add them to our list. 75 commitments is the highest number of participants in the 21-organization CJL spectrum and for one of the smaller organizations, we are very proud of that. We recently lost time Legacy Circle member and friend Len Farber, and in tribute to him and his wife, his family has decided to match his Legacy gift with one of their own honoring both of their parents. Their parents raised wonderful children! That gift will really make a difference this year at TBEMC.

Here at TBEMC, we have added 6 new Legacy Circle members this year towards our goal of 10. We need your help to meet our goal and keep Judaism and TBEMC alive now! Again, we remind you that making a Legacy gift now does not take current dollars away from your personal use. Your commitment represents a FUTURE gift. Our future gifts range from \$1800 to \$100,000 and each one matters! Now is the time to join our Legacy Circle by calling David Springer at 908-370-1890 or Laura Cohen at 908-389-1744, or by filling out the form you will find in this Bulletin. Be a "good ancestor" and sign up now! Make your family proud of you. We thank you sincerely. —David Springer and Laura Cohen

JVS

JVS Offers a Broad Range of Job Counseling Services

If you or someone you know is unemployed and looking for work, changing careers, re-entering the workforce, or is a recent college graduate and seeking a job for the first time, we can help. JVS Career Counseling & Placement offers high-quality career services — at no or low-cost to you. Services include: one-on-one career counseling and job placement, resume writing, interview training, mentoring, support groups, workshops, vocational testing, and more. For information, contact Dr. Meryl Kanner at JVS:

mkanner@jvsnj.org
973-674-6330 x 271

COMMUNICATIONS

In order to take full advantage of our communication resources please coordinate all events with the temple office. By doing so you'll have the ability to advertise your event in the following places:

weekly eblast	website
bulletin	calendar
Facebook	Shabbat handout
local newspapers	and more

You'll also be able to request an electronic payment page on the website for your event. We look forward to helping all event coordinators "get the word out" and having all our events successful.

Email the office: office@tbemc.org

LIBRARY

So many new books! Please check them out. Books are made possible by your DONATIONS. Thank you and, I hope all TBEMC readers will please continue their generosity.

- Donate to just to donate
- Donate in someone's name, honor or special occasion
- Contribute to the new Howard & Abbie Halperin Library & Education Fund

Call the office or Abbie for more information, ANY suggestions or questions. Abbie can be reached at (908) 337-5256 or abhalperin@gmail.com. Remember to *return the books as soon as you can so everyone can borrow them.*

Thank you.

Abbie Halperin



Graduations



Jessica Schwartz



Rachel Opatowski

Rachel and Craig Schwartz are pleased to announce Jessica Schwartz is graduating from Cranford High School. Jessica will attend Roger Williams University in the fall.

Dori Kaplan, daughter of Mark and Debbie, is graduating from Westfield High School. She will attend Tulane University in the fall.

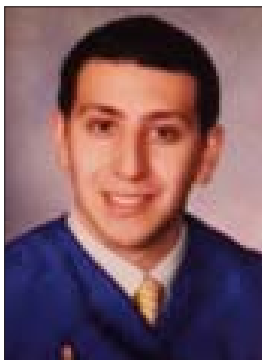
Jake Roy is graduating from the Union County Academy of Information Technology in Scotch Plains, as salutatorian. He is the son of Amy and Harold and grandson of Richard and Judy Rosenberg. Jake will be attending Rutgers University in the Honors College where he will be majoring in business.

Sarah Herz, granddaughter of Renee and Donald Herz, is graduating from College Prep High School in Oakland, CA. She will attend Swarthmore College in the fall.

Brandon Mazur, grandson of Harrier Mazur is graduating from Manalapan High School. He'll enter Rutgers in New Brunswick this fall, to study Computer Science.



Dori Kaplan



Moises Philippsborn

Rachel Opatowski, daughter of Ben Opatowski and Liz Baroh, graduated from Baruch College (CUNY) in New York City, with a BA in Business Communication with a specialization in Graphic Communication. She minored in English Literature. Throughout her education, Rachel applied her analytical abilities to data, business and branding strategies. She also pursued Graphic Design, gaining internship experience in publication and also worked with non-profit organizations. She is seeking work in business, but has ambitions to work for the City of New York.



Jake Roy (left!)

Moises Philippsborn, son of Rosi Metzger and the late Eduardo Philippsborn, graduated from Hofstra University and received his Bachelor of Business Administration from the Zarb School of Business, with a major in Accounting, and a minor in Finance. He is focusing in getting his CPA certification, and will start his career working for Price Waterhouse in New York.



Brandon Mazur



Dan Salomon

Daniel Salomon, son of Gail and David, received his MBA from Rutgers University. He currently is a manager at Everest Reinsurance Company.



FEDERATION

FERTILITY

Financial assistance for fertility treatment, surrogacy, and/or adoption. Interest free loans through the Hebrew Free Loan of NJ's Building Jewish Families Fund. Details: <http://bit.ly/2DYrhMO>

TEENS

Upcoming teen programs can be found here: <http://bit.ly/2SZq2ru>

JEWISH SUMMER OPPORTUNITIES

Open Houses

Many Jewish sleepaway camps are holding open houses right in the local community. Or set up a free phone consult with Federation's camp guru, Tracy Levine. Details here: <http://bit.ly/2RhTL9B>

Scholarships

The Greater MetroWest Jewish Overnight Camp Scholarship program seeks to enable campers from families with lower incomes or facing extenuating circumstances who may not otherwise have attended Jewish overnight camp to be able to do so. <http://bit.ly/2FRnTXR> for details, including eligibility criteria and process information. Gerri Russo, 973-929-2972 or grusso@jfedgmw.org for confidential consultations.

Teen Travel, Camp and Service Programs

There are many exciting summer experiences available for Jewish teens! Some of the most popular ones are described here: <http://bit.ly/2S5120T>. For more information about these programs as well as available grants and scholarships, contact Tracy Levine at tlevine@jfedgmw.org or Yoni Glatt at yglatt@jfedgmw.org.

RUN TBEMC

Are you a runner? If so, consider joining our Run TBEMC community. We have an active email list where we schedule runs of various lengths and at various times. For more information, email Harold Roy (hroy1@comcast.net).

Sustaining Pledge Model

Dear Fellow Members,

Hopefully you have received your 2019-2020 Sustaining Pledge Model (SPM) pledge forms in the mail. As we are nearly finished with Year 1 of our SPM and are embarking on Year 2, I thought this is an appropriate time to update our community on how the model is working so far.

From my perspective it is going well. For 2018-19, 54 families pledged at least the Sustaining Amount of \$2,600, the amount required for us to meet our annual budget. In addition, 64 families pledged to increase their annual giving by over 3%, and 36 families were Strivers, increasing their annual giving over 10%. This is a strong demonstration of how much we care about our community, and that we will voluntarily support it to the best of our ability. Conversely, there were 41 families that significantly decreased their pledges at least 3%. In the majority of cases, it was due to a financial and/or medical hardship. It befits the values of our community that members who are having a rough time do not also need to go through a dues abatement process, but rather can take comfort in the knowledge that members who are able to step up and support our community are doing so. In total, year-over-year pledges are similar, which is in line with our committee's research.

While it remains to be determined what percentage of pledges are paid in full, it appears the majority of members have already done so, or are on track to do so. This is consistent with our committee's findings that members who make voluntary pledges are highly likely to fulfill them. If you have fulfilled your 2018-19 pledge – thank you! If not, please do so before the end of our fiscal year June 30th. Every pledge counts!

The 2019-20 budget presented at the Annual Meeting projected an increase in SPM revenue, and the Sustaining Amount – the amount on average every member needs to contribute to meet our budget – has increased to \$2,900. This is meant to reflect both the necessity for us to achieve a balanced operating budget, and the belief that we will continue to generously support our synagogue. Debbie and I increased our 2018-19 pledge by over 10%, and for 2019-20 we are increasing our pledge by an additional 25%. I hope you join us in giving from your heart to support TBEMC.

As the SPM is still not even a year old, I appreciate any feedback on aspects that are going well as well as those that can be improved. Thank you for supporting your community!

L'Shalom,

Mark Kaplan, SPM chair and President-Elect

Sisterhood

Sisterhood Woman of Achievement

Carol Blank was chosen as our Sisterhood Woman of Achievement. She will be honored at the Garden State Region Women's League event on Wednesday June 5 at Temple Beth Shalom in Livingston

Carol is being recognized for her dedication and commitment to our Sisterhood. Carol brings her energy, enthusiasm and humor



to Temple Beth El Mekeor Chayim's Sisterhood. Under her leadership, she has completely revitalized our weekly onegs and kiddushim, successfully getting volunteers to come to the kitchen every Friday to prepare outstanding and unique kiddushim. More than that, she has created an environment where our

members come together and enjoy time in the kitchen, schmoozing, bonding and making new friends.

Her efforts have contributed to Sisterhood's financial support of our synagogue. Carol created, "Shabbat In A Bag," a program where Religious School students and Sisterhood members participated in learning to braid challah and decorate glass goblets, turning them into kiddush cups. She started the monthly Birthday Bash to celebrate congregants' and their children's birthdays. Carol attends minyan regularly and volunteers for our Chesed/WE CARE committee that calls and makes home visits to congregants among many other charitable deeds. She volunteers helping Jewish Family Service with Café Europa and their Holocaust Survivor cookbook project. Carol has also organized Yiddish classes. She says everything happens because of all the wonderful volunteers helping her do the work, "I just take the credit." But we know that's only partially true.

When she is not volunteering for Sisterhood, Carol works as a facilitator for NJCAP, New Jersey Child Assault Prevention, and director of Utterly Global Youth Empowerment, a company dedicated to eliminating bullying by raising awareness through education and training. Carol's dedication to the emotional safety and healthy social and psychological development of children has been a life-long pursuit. "I am truly fortunate to be able to work at something every day that reflects my core values."

WOMEN'S LEAGUE

Save the Date:

Women's League of Conservative Judaism Convention 2020

SISTERS JOURNEYING TOGETHER

July 12 - 15, 2020

Hyatt Regency Schaumburg

Schaumburg, ILL (Suburban Chicago)

Keep checking for details: www.wlcj.org

CARDS

Cards to benefit Women's League for Conservative Judaism: Whenever you need a card for a birthday, anniversary, graduation, etc., or for condolences, call or e-mail me. I can write your message and mail a Sadie Ross Book of Memories card for you. Just \$3.50 per card sends your message out and donates money to Sisterhood. You can also buy 10 cards for just \$30 to have cards on hand to send out on your own. Contact Liela Bernstein at lielaberns@comcast.net, (908) 233-0058

YIDDISH CLASS

Yiddish class presented by Sisterhood. Join us for Yiddish class every Monday at 4:00. Girsch Sorkin is teaching. Contact the office at office@tbemc.org or call at (908) 276-9231 for questions.

ONEG AND KIDDUSH

Sisterhood joyfully prepares and platters the Oneg and Kiddush each week that it is not sponsored. Please sign up to help. Ask a friend to join you who hasn't experienced the Friday morning fun yet, beginning at 10 ending by noon or earlier. The more people who sign up, the more fun and easier it is on everyone! Don't just think that "someone else will do it." We need you one and all. (Men and women wanted. No experience necessary.)

Contact Carol Blank to volunteer at (908) 272-7254 or mail2duck@aol.com.

CROP WALK

Our Crop Walk participation was featured in the Women's League magazine. Thank you to Marlene Oslick for submitting that!

**Join Sisterhood for
Sisterhood Shabbat
Saturday, June 1**

**Save up your Rummage items
Sisterhood Rummage Sale
will be held this fall**

**Celebrate July and August
birthdays with us
on Saturday, June 29th**

Classes

TORAH WITH LAURA

We have many openings for upcoming haftarah!

Have you thought about re-learning your bar or bat mitzvah haftarah? Do you want to try out a new ritual skill? Do you have a special family occasion coming up that would be appropriate for the honor of chanting a haftarah? Are you willing to put some time into practice? Lessons and assignments for Torah and haftarah readings! This is your one-stop shop! Please reply if you have a specific request or just want to learn how to do it. Laura Cohen, cell (848)702-9106

HEBREW

Hi everyone! I would like to start a new Hebrew reading class. The class would be for beginners and those who had training as a child, but their skills have lapsed. We can arrange to meet during the summer and then continue into the fall or we can start in the fall after the holidays and continue through the year. Please contact me if you are interested!!

Liela Bernstein, (908) 233-0058, lielaberns@comcast.net

FILM SERIES TBEMC Film Festival: *Jews Around the World A series of films that depict Jewish life in countries outside of the United States and Israel.* Sunday evenings. \$10 requested for dinner when it's held. Please Dinner and movie are in the Youth Lounge. Dates and movies are subject to change. RSVP to th office or to Marty at schwartz.martinm@gmail.com.

Coming up:

June 23 "Mr. Kaplan" (Uruguay)

FREE ADMISSION!

BRING YOUR FRIENDS!

POPCORN PROVIDED!!



Wall of Community

This is a reminder about our ongoing commemorative tile project. We will continue ordering tiles, and an order is placed when we have five or more or more orders. You can have three lines of text, 20 characters per line. Please see the flyer for details about ordering. If you have any questions, feel free to contact Sandy Springer at 908-507-3291 or via email sprfamily@verizon.net. You can order online at www.tbemc.org with a credit card or send in a check to TBEMC, 338 Walnut Ave, Cranford, NJ 07016. Honor a special person, occasion, commemorate your years at TBEMC or celebrate our 101st anniversary.

APRIL 2017		METZGER
J LIFE	ESTHER KRAUEGER	
AB MARTON	NURSE	
5/18/2014	PROFESSOR	
		WC

Commemorate the past. Celebrate the present. Inspire the future.

TORAH FUND



Atid means "future" in Hebrew. As Women's League for Conservative Judaism enters its second century, Torah Fund begins its 77th year, the and State of Israel enters its 71st year. We look forward with joy to our future together with you, our sisterhood members and supporters of Torah Fund.

When the classical rabbinic texts speak of the future using the word atid, it usually appears in the phrase "le'atid lavo," which means "in the future to come." By this, they mean either the day when the Messiah will come, or olam haba, the afterlife. Israelis, referring to this life, are known to say with optimism, "Yesh atid," which means "there is a future!"

How do you envision your future? Your personal future, the future of your family, the future of your community, of the United States, Canada, and Israel? When you dream of a bright future, is it in the next world or this one? The seminaries of the Conservative/Masorti movement, which we support through Torah Fund, are doing the great work that helps us navigate our future together, as one people. Our sisterhoods provide the social and educational networks – the extended family – that help us go forward into our future, as Jewish women, with confidence.

The 5779 Torah Fund pin envelopes the Hebrew word for "future" (atid) with a stylized Magen David. It represents our wish for a distinctly Jewish future, for ourselves as individuals, for our families, and our communities.

Fundraising

Gift Cards Sisterhood sells gift cards all year long. Use them instead of your credit card when grocery shopping as well. When you buy your gift card through Sisterhood, TBEMC gets a percentage of every card, and it costs nothing extra. Did you know that 5% of every ShopRite card you buy goes to TBEMC? While you may forgo your credit card rewards in using them, you'll be making a valuable donation to the shul.

How to Get Gift Cards Linda Flaxman is the queen of gift cards. Email Linda at linda.flaxman@rutgers to order them. She's often at the Sunday morning minyan with her box of cards, as well as other synagogue events.

The temple office has several types of grocery store gift cards. Come in during office hours (including the start of Tuesday Hebrew School) and purchase from her.

Gift cards bring in thousands of needed dollars to TBEMC every year. Though it may take a little adjustment in how you do your grocery shopping, purchasing or ordering cards from Linda and not picking them up at the store, does a mitzvah. Cards include: **Shoprite, Acme, Kings, Barnes & Noble, Dunkin' Donuts, Starbucks, Home Depot, Lord & Taylor, & Claire's.**

Cars for Cash Are you looking for a tax break for next year? One great way to support TBEMC is by donating your used car. You get the full tax deduction and TBEMC gets the majority of the donation. To donate, go to the "Support the Temple" part of TBEMC's website, click "Support by Shopping" and then click "CARS." For questions or more info on this easy donation process, please contact Mark Kaplan at 908-232-5498 or @hotmail.com

Support TBEMC

Use the Support by Shopping Link

Amazon has historically generated the most revenue for the Temple in terms of support by shopping (with the exception of car donations), but we can do much better. Use this URL to support TBEMC by shopping with Amazon, Barnes and Nobel, Jewish National Fund, car donations, JDeal, Escrip, Israel Bonds: Use the link on the TBEMC site, or bookmark: <http://tbemc.org/shopping/>

Please send me an email if you have any difficulties or any questions.

—David Thaler, mediatorthaler@hotmail.com

COMMUNITY

A very special thank you to the generous Kiddush fund donors. *Joe Bloomfield and the Kiddush Committee*



Jessica started at TBEMC Nursery School at age 2, and completed her formal Jewish education at TBEMC. She's been working at the Religious School ever since, and will be entering college this fall.



Joe received a thank you gift from Jackie Baranoff for all the volunteering he's been doing in the office.

<p>JUNE 2019 Minyan Rotation Evening Minyan Mon. Tues. & Thurs 7:30 pm</p>	<p><u>Monday, 6/3</u> Rosman, Betty Roy, Harold & Amy Salomon, David & Gail Samolsky, Martin & Linda Scheiner, Harriet Scheiner, Steven & Sylvia Schwartz, Alan Scher, Michael & Beverly</p>	<p><u>Tuesday, 6/4</u> Kimmelman, Sam Schulz, Peter & Jill Schwartz, Craig & Rachel Schwartz, David & Rochelle Schwartz, Martin & Gerner, Raquel Segal, Yaniv & Keren Taub, Michael & Sharon Taub, Ted & Eugenie</p>	<p><u>Thursday, 6/6</u> Thaler, David & Plotkin, Amy Turnoff, Aaron & Stacy Veron, Joy Waldman, Len & Lois Werschulz, Art & Patty White, Garret & Deb Wiecek, Andrew & Michelle Wofsy, Greg & Judi Wolf, Deborah</p>	<p><u>Monday, 6/10</u> Alexander, Ira & Oznat Ballen, Elliot & Janet Baranoff, Jerry & Jackie Barkin, Allen & Julie Barr, Sharlene Bernstein, Leila Bilenker, Teri Blank, Carol & Levine, Les Bloomfield, Joe Bromberg, Marc & Jessica</p>
<p><u>Tuesday, 6/11</u> Kimmelman, Sam Brugger, Seth & Abby Canter, Melanie Cohen, Aaron & Laura Cohen, Harold & Helaine Cohen, Judy Cordero, Ruben & Marla Daniel, Gary & Judy Davidson, Ken & Leah Dulberger, Leo</p>	<p><u>Thursday, 6/13</u> Eibschutz, Marc & Ghitta Einhorn, Harry & Roberta Eisenberg, Ken & Susan Epstein, Howard & Cari Farber, Seth & Heidi Feldman, Andrew & Lauren Ferdinand, Carrie Figman, Paula Fine, Bert</p>	<p><u>Monday, 6/17</u> Fink, Marc & Berzon, Carla Finkelstein, Joan Finston, Leo & Levy, Joanne Fiore, Caren Flaxman, Max & Linda Forlander, William & Carol Fox, Milton & Ernestine Ganzman, Adam & Andrea</p>	<p><u>Tuesday, 6/18</u> Garber, Leah & Lankin, Andrea Gerber, Steven & Sandy Ginsberg, Barbara Goldberg, Jason & Shira Goodgold, Abraham & Barbara Goodman, Gary & Andrea</p>	<p><u>Thursday, 6/20</u> Greenberg, Marvin Halperin, Howard & Abbie Handsman, Brett & Jessica Harris, John & Susan Herz, Donald & Renee Heyman, John & Nita Hoff, Jessica Jacobson, Jerrold Jacobson, Lisa</p>
<p><u>Monday, 6/24</u> Kandl, Lance & Phyllis Kanig, Barry & Jane Kant, Clarisse Kaplan, Mark & Debbie Kendler, Gary & Linda Kessler, Fred & Roberta Kessler, Matt & Nicole Kipness, Stanley & Mindy Klein, Robert</p>	<p><u>Tuesday, 6/25</u> Kopla, Rafael & Shari Kramer, Mitchell & Aimee Kramer, Seth & Sarah Kupferberg, David & Judy Leber, David & Deborah Lefkovic, David Lefkovic, Fred & Ruth Lehrer, Brian & Nadine</p>	<p><u>Thursday, 6/27</u> Leifer, Jonas & Linda Levenberg, David & Linda Levine, Sheila Lulinski, Libby Mallo, Chris & Jessica Marguiles, Marvin Mayer, Neil Mazur, Harriet Mazura, David & Marla</p>		



Yahrzeit Announcements

JUNE 1-7, IYYAR 27-SIVAN 4

Alfred Epstein, grandfather of Ruth Lefkovic
Leo Finkelstein, grandfather of Leo Finston
Fannie Kipnes, mother of Betty Rosman
Sylvia Flaxman, mother of Max Flaxman
Martin Scher, brother of Michael Scher
Joseph Kroner, father-in-law of Jean Kroner
Anne Zablotsky, mother of Thelma Rappaport
Lilly Korn, sister-in-law of Kurt Steiner
Elsie Baranoff, Mother of Jerald Baranoff
Esther Grodjesk, grandmother of Jane Abel
Dorothy Kalt, mother of Steven Kalt
Henry Levy, grandfather of Ronald Frank
Hannah Margulies, wife of Marvin Margulies
Tessie Silverblatt, mother of Esther Finkelstein
Hilda Sendyk, aunt of Annette Sarrazine

JUNE 8-14, SIVAN 5-11

Alvin Beinstein, husband of Judith Beinstein
Frances Goldberg Gare, mother of Judith Feldman
Max Kipness, father of Stanley Kipness
Sally Gallof, mother of Rochelle Schwartz
Julius Kaplan, father of Bea Linkov
Sarah Lobel, grandmother of Rhondi Solomon
Ronald Mazur, husband of Harriet Mazur
Erwin Rausch, husband of Grace Rausch
Bernice Weinstock, mother of Eric Weinstock
Bernice Weinstock, sister-in-law of Marvin Greenberg
Mildred Katz, mother of Joel Katz
Sylvia Levine, sister-in-law of Esther Levine
Martin Steuer, father-in-law of Carol Steuer
Leila Tratner, sister of Rochelle Schwartz
Jack Wilner, uncle of Amy Friedman
Abraham Lefkovic, father of David Lefkovic
Mordehai Leizerovich, father of Feiga Sorkin
Selma Pollack, mother-in-law of Geoffrey Bob
Eli Zinker, uncle of Sima Murphy
Jacob Katz, grandfather of Joel Katz
Max Yagodnick, father of Bernard Young



JUNE 15-21, SIVAN 12-18

Harmon Finston, father of Leo Finston
Julian Frost, father of Linda Gantz
Leah Zilberman, sister of Marcu Eibschutz
Lauren Cohen, wife of Scott Cohen
Michael Hecht, husband of Judith Hecht
Arnold Schoss, brother-in-law of Sadie Schoss
Kevin Dulberger, son of Davita Dulberger
Joseph Hecht, father-in-law of Judith Hecht
Rita Hart, sister of Doris Weingus
Beatrice Langer, mother of Ian Langer
Arthur Kaplan, brother of Dolores Sheps
Shirley Farbman, mother of Donna Rubin
Joshua Katz, brother of Joel Katz
Bathya Flor Leizerovich, mother of Feiga Sorkin
Perl Lulinski, mother-in-law of Libby Lulinski

JUNE 22-28, SIVAN 19-25

Evelyn Mauer, mother of Barbara Goodgold
Leopold Buerger, father of Ruth Lefkovic
Edward Platt, father of Robert Platt
Jacob Scarr, grandfather of Frederic Kessler
Edward Cagan, husband of Fern Cagan
Dinah Horowitz, grandmother of Gary Horowitz
Benjamin Averbach, father-in-law of Michael Reitman
Gitl Hoffnung, mother of Mollie Sperling
Jakob Hoffnung, brother of Mollie Sperling
Leser Hoffnung, father of Mollie Sperling
Pesel Hoffnung, sister of Mollie Sperling
Joyce Waldman, wife of Leonard Waldman
David Miller, father of Fern Cagan
Abraham Dulberger, grandfather of Leo Dulberger
Etta Fink, mother of Marc Fink
Lester Rosenblum, husband of Gail Rosenblum
Dina Novick, mother of Mr. Sol Novick

JUNE 29-30, SIVAN 26-27

Arthur Kasper, husband of Marilyn Melcher
Lillie Liebenson, mother of Joan Finkelstein
Harry Muskat, father of Helaine Cohen

DONATIONS



Yahrzeit Fund

Donations made by:

Judith Beinstein, in loving memory of Norman Beinstein
Liela Bernstein, in loving memory of Arthur Soberman
Judith Beinstein, in loving memory of Alvin Bernstein
Harold Cohen, in loving memory of Lois Fein
Harold Cohen, in loving memory of Harry Muskat
Gary & Judith Daniel, in loving memory of Norbert Daniel
Davita Dulberger, in loving memory of
Harry & Roberta Einhorn, in loving memory of Rose Einhorn
Bertram Fine, in loving memory of Anna Fine
Judy Harris, in loving memory of Nathan Melon
Barry & Patricia Hecht, in loving memory of David Hecht
John & Nita Heyman, in loving memory of Rose Barkin
Gary Horowitz, in loving memory of Dinah Horowitz
Robin Kalt, in loving memory of Dorothy Kalt
Brian & Ruth Kerr, in loving memory of Debbie Siegel
Frederic Kessler & Roberta Schoen Kessler
Linda & Jonas Leifer, in loving memory of Milton Leifer
Fred & Ruth Lefkovic, in loving memory of Leopold Buerger
Libby & Ira Lulinski, in loving memory of Pearl Lulinski
Mark & Florence Lurinsky, in loving memory of Benny Lurinsky
Marvin Margulies, in loving memory of Hannah Margulies
Florence Nadelman, in loving memory of David Feshbach
Florence Nadelman, in loving memory of Benjamin Nadelman
Roberta & Jonathan Philips, in loving memory of Howard Phillips
Robert & Karen Platt, in loving memory of Edward Platt
Mildred Pollock, in loving memory of Sally Weingarten
Grace Rausch, in loving memory of Erwin Rausch
Fred & Gail Rollman, in loving memory of Marian Rollman
Betty Rosman, in loving memory of Fannie Kipnes
Donald Shapiro, in loving memory of Arthur Lubarsky
Theodore & Madeline Spitz, in loving memory of Theodore Spitz
Kurt Steiner, in loving memory of Adolf Steiner
Kurt Steiner, in loving memory of Emma Steiner
Kurt Steiner, in loving memory of Lilly Korn
Carol Steuer, in loving memory of Martin Steuer
Lillian & Leonard Storch, in loving memory of Phillip Wexelblatt
Lillian & Leonard Storch, in loving memory of Kenneth Wexelblatt

We Care Fund

Donations made by:

Lawrence Posner, in loving memory of Harold Posner, Beatrice Posner, Samuel Weissman, Esther T. Weissman
Lawrence Posner, in honor of Rebecca Handsman's Bat Mitzvah
Irwin & Thelma Rappaport, in loving memory of Anne Zablotsky & Carol Polen
Gail & David Solomon, in loving memory of Max Salomon, Thekla Salomon, Ruth Weiss & Nathan Weiss

Library Fund

Donation made by:

Howard & Abbie, in loving memory of Simon Raicer

Rabbi Discretionary Fund

Donations made by:

Keith & Alex Linden
Eleanor Fishman

The Temple office can help you decide what the best giving opportunity is for you

908-276-9231 x10 or office@tbemc.org

Please consider donations to these other charitable funds at TBEMC

Yahrtzeit Fund

Rabbi Discretionary Fund

Stuart Kaback Memorial Fund

Accessibility Project Fund

Halperin Library & Education Fund (HLEF)

Temple Fund

We Care Fund

Dora Haleva Fund

Holocaust Garden fund

Metzger Memorial Fund

Youth Education Trust Fund

Cantor Discretionary Fund

Simcha Fund

Doris Bloomfield Fund

Men's Club Fund

Religious School Fund

Shiva Meal Fund

JNF Tree Fund

Sisterhood Fund

We Gratefully Acknowledge

These Donations Made to

Temple Beth-El Mekor Chayim

YOU'RE INVITED TO AN EVENT OF GRILLIN'



AND CHILLIN' WITH *RANDY ACCARDI*,

Performer, Musician and Dancer

TUESDAY, JUNE 11th at 11:00am

TBEMC'S SENIOR MONTHLY GATHERING

A DELICIOUS INDOOR BARBECUE LUNCH
WILL BE SERVED

\$5 Donation for Temple members and caregivers

\$10 Donation for non-Temple members

R.S.V.P. TBEMC office, (908) 276-9231

This program is sponsored by the Elder Law Firm of
Fink Rosner Ershow-Levenberg, LLC

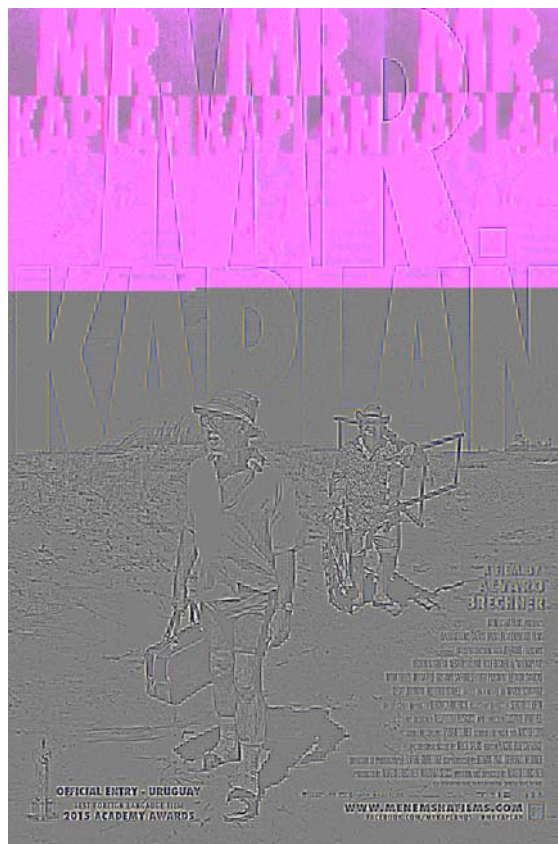


LIFE-LONG LEARNING COMMITTEE PRESENTS
"JEWS AROUND THE WORLD" FILM SERIES

SUNDAY, MAY 19, 2019 @ 7:00 PM

"MR. KAPLAN" (Uruguay - 2014)

(In Spanish with English Subtitles)



Having escaped Nazi Europe, Jacob Kaplan has led a quiet life in Uruguay. Now, at the age of 76, he begins to question his life's worth as his family grows increasingly concerned that he is losing his faculties. When he begins to suspect that an elderly German immigrant is a former Nazi, he becomes determined to expose him and bring him to justice. This wry comedy-drama, Uruguay's official entry to the 2015 Academy Awards for Best Foreign-Language Film, touches on themes of family, aging and the need to find meaning in our lives.

FREE ADMISSION! BRING FRIENDS!! POPCORN PROVIDED!!!

TEMPLE BETH-EL
MEKOR CHAYIM
WALL OF COMMUNITY
CELEBRATES 100 YEARS
JUNE 2017

**In memory of Millie Lewis, Brenda Klein, Lewis & Martha Heicklen,
Ted Spitz, Simon & Irene Holtz Raicer (parents of Abbie Halperin),
Ann & Samuel Halperin (parents of Howard Halperin)**

To celebrate the marriage of Mitchell & Marina Merman and the birth of Steve & Tammy Merman's grandson

Commemorate the past. Celebrate the present. Inspire the future.

If you are interested in reserving your commemorative tile online with a credit card, go to www.TBEMC.com and look for information about the commemorative tiles or mail in your check with the wording you want inscribed.

More information or questions: Sandy Springer, 908-507-3291 or sprfamily@verizon.net
Samples of some tiles already installed are below.





CELEBRATE!

Birthday, anniversary, baby, new job, retirement, good news, good health, good luck, goodbye....the reasons are infinite.

The best reason...support Sisterhood.

Sisterhood provides the Oneg and Kiddush each week it is not sponsored. We financially support the religious school, library, USY and Kadima youth groups, joyfully present B'nai Mitzvah gifts, and donate to synagogue projects.

The Sisterhood Saturday Kiddush is prepared for the congregants attending services, approximately 30-40 attendees each week. Share your simcha with your temple community and pick a date to underwrite the cost of a kiddush.

**The cost is 10 times Chai, \$180.00.
Call Lisa in the TBEMC office at 908-276-9231
and let her know the date you are looking for
and what you want inscribed on your special cake.**



Torah Fund

Women Ensuring Conservative/Masorti Jewish Education



A campaign to ensure our legacy to future generations of Conservative Jews by providing:

Rabbis
Cantors
Educators and Administrators
for Day Schools and Synagogue Schools
Synagogue Administrators
Social Workers
Scholars
Professional and Lay Leaders
Researchers

and more

You are Torah Fund at any level:

Keter Kavod	\$5,000
Scholarship Patron	\$2,500
Patron	\$1,200
Associate Patron.....	\$ 600
Guardian	\$ 300
Benefactor.....	\$ 180

Your Torah Fund contribution strengthens and perpetuates Conservative/Masorti Judaism throughout the world.

Atid



Receive the Torah Fund pin for 5779 as
OUR GIFT TO YOU
in recognition of your generous support.

Pin design by Eytan Brandes

Atid means "future" in Hebrew. As Women's League for Conservative Judaism enters its second century, Torah Fund begins its 77th year, and the State of Israel enters its 71st, we look forward with joy to our future together with you, our sisterhood members and supporters of Torah Fund.

When the classical rabbinic texts speak of the future using the word *atid*, it usually appears in the phrase *le'atid lavo*, which means "in the future to come." By this they mean either the day when the Messiah will come, or *olam haba*, the afterlife. Contemporary Israelis are known to say, with optimism, *yesh atid*, which means "there is a future!"

How do you envision your future? Your personal future; the future of your family; the future of your community; of the United States, Canada, and Israel? When you dream of a bright future, is it in the next world or this one? The seminaries of the Conservative/Masorti Movement, which we support through Torah Fund, are doing the great work that helps us navigate our future together, as one people. And our sisterhoods provide the social and educational networks—the extended family—that helps us go forward into our future as Jewish women, with confidence.

The 5779 Torah Fund pin envelopes the Hebrew word for "future" (*atid*) with a stylized Magen David. It represents our wish for a distinctly Jewish future, for ourselves as individuals, our families, and our communities.

For information, please contact your Sisterhood Torah Fund Chair or Rabbi Lilly Kaufman at likaufman@jtsa.edu or (212) 678-8876.

EARN MONEY FOR **TBEMC** WHILE YOU FOOD SHOP!

Everything you ever wanted to know about raising money for the Temple
by shopping with vouchers (scrip).

What is it?

The TBEMC Sisterhood's Voucher program sells gift cards (scrip) for ShopRite.

How does it work?

Shoprite has agreed to sell the gift cards to Sisterhood at a discount. You buy the cards at face value, and the synagogue keeps the difference. You get to participate in an important fundraiser, and it costs you absolutely nothing extra! You can use these convenient gift cards for your regular shopping or to give as gifts!

How can you participate?

We make it easy! Vouchers are available* in the Temple office, during any Sisterhood meeting or event, Board of Trustees meetings, or by contacting the Temple office, Sandy Springer (908-507-3291), or the chairperson, Linda Flaxman (908-276-9086), or linda@flaxman.com. We can make them available during Religious School hours, too, if there is an interest.

*Must be paid for at time of purchase

What else do you need to know?

Sisterhood donates all of the profits earned from the sale of vouchers back to TBEMC – to the Religious School, USYers, and special programs. Also, Sisterhood members earn 5% of their purchase price in donor credit, which goes toward their cost of attending the Donor Celebration in June.

More Questions?

Contact Linda Flaxman at 908-276-9086 or linda@flaxman.com. She will answer any other questions.





WE GRATEFULLY ACKNOWLEDGE THE MEMBERS OF THE TBEMC LEGACY CIRCLE

Jaclyn Baranoff	Jerald Baranoff	Allen Barkin
Julie Roffé Barkin	Carol Blank	Bernice Bedrick*
Spencer Brooks	Laura Cohen	Aaron Cohen
Charles Colodner	Gary Daniel	Judith M. Daniel
Susan Burde Eisenberg	Kenneth S. Eisenberg	Linda Ershow-Levenberg
David Levenberg	Heidi Farber	Leonard Farber*
Bertram Fine	Joan Finkelstein	Alice Gerson Goldfarb
Gary Goodman	Marvin Greenberg	Abbie Raicer Halperin
Howard Halperin	Lance Kandl	Phyllis Kandl
Fred Kant*	Clarisse Kant	Mark Kaplan
Deborah Kaplan	Frederic Kessler	Roberta Kessler
Sam Kimmelman	Jerome Krueger	Charles Leavitt
Sheila Levine	Mildred Lewis*	Nancy Lubarsky
Robert Meth/Estate of Meth	Martin Metzger	Rosi Metzger
Harold Oslick	Marlene Oslick	Lawrence H. Posner
Irwin & Thelma Rappaport	Rosalind Reiss	Adam Reissman
Rebecca Reissman	Roberta Rich	Laura Rubin
David Salomon	H. Gail Salomon	Rochelle Schwartz
David Schwartz	Alan Schwartz	Donald Shapiro
Charles Sporn	Trudy Springer*	Sandra Springer
David Springer	Myra Stein	Phillip Stein
Laurie Steinbach	Stephen Steinbach	Lois Rabbino Waldman
Len Waldman	Joy Weinstock	Michael Weinstock
Patricia Werschulz	Arthur Werschulz	

Each of these people has made a future gift to assure the survival of TBEMC. Thank you so much to each Legacy Circle member for caring and committing! You too can join the Legacy Circle by reaching out to David Springer at 908-370-1890 or Laura Cohen at 908-389-1744. *Of blessed memory



I/We have **also** made provisions, **and will complete a separate form**, for a legacy gift to the following community partner organization(s):

- ☐ Adath Shalom
- ☐ Bnai Keshet
- ☐ Congregation Agudath Israel
- ☐ Congregation Beth Israel, Scotch Pl
- ☐ Congregation B'nai Israel, Millburn
- ☐ Congregation Ohr Shalom-Summit JCC
- ☐ JCC of Central NJ
- ☐ Jewish Family Service, Central
- ☐ Jewish Family Service, MetroWest
- ☐ Jewish Service for the Developmentally Disabled
- ☐ Morristown Jewish Center Beit Yisrael
- ☐ Mt. Freedom Jewish Center
- ☐ Oheb Shalom Congregation
- ☐ Temple Beth Ahm Yisrael
- ☐ Temple Beth O'r Beth Torah
- ☐ Temple Beth Shalom
- ☐ Temple Beth-El Mekor Chayim
- ☐ Temple B'nai Or
- ☐ Temple Emanu-El, Westfield
- ☐ Temple Sinai, Summit
- ☐ YM-YWHA of Union County
- ☐ Other _____

Please return this form to the organization(s) you designated or to:

Karen Secular, Program Manager
Jewish Community Foundation
901 Rt. 10, Whippany, NJ 07981
973-929-2918
ksecular@jfedgmw.org

Thank you for taking this beautiful step to secure a strong Jewish future.

Confirmation of Commitment

I/we _____ have made provisions for a legacy gift to _____.

My/Our gift is in the approximate amount of \$ _____, **OR** _____ % of my/our estate or plan, and was completed through (check a box, please):

- | | |
|---|---|
| <input type="checkbox"/> Bequest/Will | <input type="checkbox"/> Life Insurance |
| <input type="checkbox"/> Retirement Plan Assets (e.g., 401(k), IRA) | <input type="checkbox"/> Charitable Remainder Trust |
| <input type="checkbox"/> Estate or Business Interest | <input type="checkbox"/> Other _____ |

(Please Print Clearly or Type)

Donor Name _____ Date of Birth _____

Donor Name _____ Date of Birth _____

Name(s) as you wish them to appear for formal recognition (without titles) _____

Street Address _____

City, State, Zip _____

The BEST phone number(s) to reach you. Please indicate cell or home. _____

Email Address or Addresses _____

Please check all that apply:

- ☐ You have permission to **recognize me/us publicly** (without gift type or amount)
- ☐ I/We would like our gift to remain **anonymous** at this time.
- ☐ I/We understand that you will inform the **designated organizations** of this gift.
- ☐ Please have a Jewish Community Foundation staff member contact me for a confidential conversation regarding my legacy gift.

I/We understand that this commitment is revocable and may be modified at my/our discretion. I/We will endeavor to notify the recipient organization(s) accordingly.

Donor Signature _____ Date _____

Donor Signature _____ Date _____

Recipient Organization Representative Signature _____ Date _____



Jewish Hospice Care

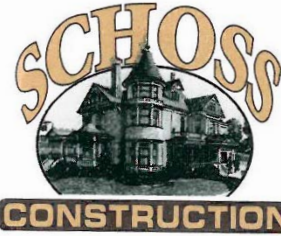


- Excellent Nurse to Patient Ratio
- Home Health Aide Support for Family
- Bereavement Support Monthly Meeting
- Complementary Chicken Soup plus Harp and Massage therapies



STEIN HOSPICE
at The Oscar and Ella Wolf Campus for Senior Living
49 Veronica Ave., Suite 206
Somerset, NJ 08873
(732) 227-1212
www.SteinHospiceNJ.org

Serving Union, Middlesex,
 Somerset and Monmouth Counties
*Accredited by the National Institute
 for Jewish Hospice*



Ethan Schoss
 P.O. Box 969
 Scotch Plains, NJ 07076

Office: 908-889-9042
 Fax: 908-822-8840
 www.schossconstruction.com

BRIAN T. DENNY

PH. 908-276-8062
 ARNOLDSPESTCONTROL@GMAIL.COM

ARNOLD'S PEST CONTROL, INC.

COMPLETE TERMITE & PEST CONTROL SERVICE



INTEGRATED PEST MANAGEMENT
WWW.ARNOLDSPESTCONTROL.COM



INDUSTRIAL
 COMMERCIAL
 RESIDENTIAL

9 QUINE STREET
 CRANFORD, NJ 07016

SCHWARTZ BARKIN & MITCHELL

Attorneys at Law

1110 Springfield Road
 Union, New Jersey 07083-1339
 (908) 688-1644 FAX (908) 688-9530
 www.sbmcsq.com
 sbarkin@sbmcsq.com

Commercial • Real Estate • Family • Collections
 Estate Planning • Employment • Education
 Appellate • Municipal Court • Land Use • Litigation

HOWARD SCHWARTZ
ALLEN J. BARKIN
GAIL J. MITCHELL
ALDAN O. MARKSON
DAVID WENDEL



Residential and Commercial Service
 Scotch Plains, NJ • 908-222-1566
 grandsanitation.com

INVESTMENT/MANAGEMENT
 DIVISIONS

(908) 686-1800
 Fax (908) 686-1839



MITCHELL KRAMER



BROUNELL



KRAMER REALTORS

1435 MORRIS AVENUE, UNION NEW JERSEY 07083

FINK ROSNER ERSHOW- LEVENBERG, LLC

ATTORNEYS AT LAW

60 WALNUT AVENUE • SUITE 202 • CLARK, NJ 07066
(732) 382-6070

WWW.FINKROSNERERSHOW-LEVENBERG.COM

FOLLOW OUR ELDER LAW BLOG POSTS AT:

WWW.LEGALNEWSYOUCANUSE.COM

ELDER & DISABILITY LAW

◆ WILLS, TRUSTS &
GUARDIANSHIPS

◆ MEDICAID
PLANNING,
APPLICATIONS &
APPEALS

◆ SPECIAL NEEDS
PLANNING

◆ PROBATE & ESTATE
ADMINISTRATION

PLANNING
PRESERVING
PROTECTING...

Your Life's Most
Valuable Assets

Certified Elder Law Attorneys,
Certified by the National Elder Law
Foundation, an ABA approved
organization approved by the N
Supreme Court

Just 2 minutes from GSP Exit 135



EUROPEAN  WAX CENTER®

THE ULTIMATE WAX EXPERIENCE

FREE^{*}

BODY WAX

FOR FIRST TIME GUEST

520 North Ave. in Garwood
(Across from ShopRite, next to Massage Envy)
908.789.1515 or www.waxcenter.com

The Weisman Family

*Call for details
OPEN 7 DAYS

Like us on Facebook!



If you are a member of Facebook, you can help TBEMC by sharing our news, stories and promotions about social and fund raising events.

You can simply hit the "SHARE" button to share all that we do with your family and friends who may be interested in some of the things that we do at TBEMC.

We have two Facebook pages, one for the general synagogue and one for religious school. If you haven't already, please like both pages. The links are below. Then you can easily hit the "SHARE" button each time exciting news and events appear on your page!

TBEMC MAIN TEMPLE LINK

<https://www.facebook.com/TBEMC/>

RELIGIOUS SCHOOL LINK

<https://www.facebook.com/Temple-Beth-El-Mekor-Chayim-Religious-School-185439761483723/>

Office Hours By Appointment



DANIEL T. GINTER, D.M.D.
Oral and Maxillofacial Surgery
Specialty Permit #2890

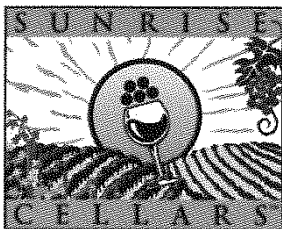
34 Forest Avenue
Cranford, New Jersey 07016-2412
Telephone: (908) 272-3950
Fax: (908) 709-3710

**BERNHEIM APTER
REITZMAN**
Suburban Funeral Chapel

68 Old Short Hills Road • Livingston, NJ 07039
(973) 422-0600 • Fax (973) 422-0606
(800) 938-6372



LICENSED MANAGER: LOUIS J. URBAN NJ LIC. NO. 3537
RICHARD M. SCHUELE NJ LIC. NO. 4043



ShopRite
Wines and Spirits
of Westfield

Ken Kimble
Store Manager
908-232-8700 phone
908-232-8099 fax

333 South Avenue East, Westfield, NJ 07090
ken.kimble@sunrisecellars.com

(732) 574-2040

DELI KING CLARK

Restaurant/Catering/Delicatessen

30 Clarkton Drive
Clark, New Jersey 07006
(Located in the Clarkton Shopping Center)

Beckerman & Company

Professional Insurance Managers

**We represent over 25 insurance Carriers offering competitive choice
for all your Business & Personal Insurance Needs!**

www.beckermanco.com

430 Lake Avenue
(732) 499-9200

Colonia, NJ 07067
Fax (732) 499-9050